

DBI

GROUPE

QUICK COUPLINGS
COUPLEUR RAPIDE

107.11

ISO 6150 - C



JOINT ET MATERIAUX	01-02
CARACTERISTIQUE SERIE 107	03-04
OPTIONS	05-06
SERIE 107.03	07
COUPLEURS	08
COUPLEURS TRAVERSÉE DE CLOISON	09
COUPLEURS RÉPARTITEUR	10
EMBOUT SANS CLAPET	11
EMBOUT À CLAPET	12
SERIE 107S	13-15

**QUICK RELEASE COUPLINGS FOR ALL KINDS OF FLUIDS
COUPLEUR RAPIDE TOUS FLUIDES**

One Handed connection and disconnection
Ei Connexion & déconnexion à une main

SERIE 107 ISO 6150 - C

NBR (Nitrile)

Main properties: Resistant to oil and petrol good ageing characteristics, high abrasion resistance.

Applications standards
Bonne résistance mécanique
Bonne résistance aux hydrocarbures

FPM (Viton)

Main properties: Outstanding heat resistant performance, excellent resistance to oils, chemicals, solvent, active oxygen, and weather.

Bonne résistance chimique
Bonne résistance à la T°
Bonne résistance aux carburants
Bonne résistance aux solvants

EPDM (Ethylène - Propylène)

Main properties: Ethylene Propylene, High mechanical strength, excellent resistance to high and low temperatures and to active oxygen and weather. Good resistance to chemical media.

Bonne résistance à la T°
Bonne résistance à l' eau froide
Bonne résistance à l' eau chaude
Bonne résistance à la vapeur
Recommandé pour glycol

PTFE (Teflon)

For very aggressive media special constructions with PTFE seals (Teflon) are available.

Recommandé pour les applications chimiques très agressives
Très Résistant à basse température
Très résistant à haute température

	Matériau					Seal Joint		
	Steel zinc plated Acier zingué	Brass - Lation	AISI 316 Ti or similar Inox 316 Ti	Polyamide 11/12	Polyamid 11/12 Polyacétal - Polyacétal	NBR Nitrile	FPM Viton	EPDM
Acetate (Ethyl Acetate & Amyl Acetate)	✓	✓	✓	✓	✓			x
Acetic acid 10%	—	—	✓	—	✓			x
Acetone	✓	✓	✓	✓	✓			x
Acetylene	✓	✓	✓	✓	✓	x	x	x
Aero Engine Fuel BP, Esso Avgas100/130	✓	✓	✓	✓	■	x	x	
Aero Engine Oil BP : AIRO 1210, Esso:AVIATON-120 Shell:AIRO-120, DERD 2487 DERD 2497, DTD 585	✓	✓	✓	✓	■	x	x	
Skydrol	✓	—	—	—	—			x
Oronite	✓	—	—	—	—			x
Air, compressed	✓	✓	✓	✓	✓	x	x	
Air, hot up to 120°C	✓	✓	✓	■	—	x	x	
Air, hot up to 200°C	✓	✓	✓	—	—	x		
Alcohol	✓	✓	✓	✓	✓			x
Alum	—	—	✓	—	✓	x	x	x
Alkalies	—	■	✓	✓	■	x	x	
Ammonia, Liquid	■	—	✓	✓	—			x
Ammonium Sulphate Solution	—	—	✓	✓	■	x	x	x
Amyl Alcohol	✓	✓	✓	✓	✓			x
Aniline	✓	—	✓	■	—			x
Benzole	✓	✓	✓	✓	✓			x
Borax	✓	✓	✓	—	—	x	x	
Bultane	✓	✓	✓	✓	✓	x	x	
Bultane	✓	—	✓	—	—	x	x	
Butyl Alcohol	—	✓	✓	✓	✓			x
Carbon Dixide	—	✓	✓	✓	✓	x	x	x
Carbon Dioxide, dry	—	✓	✓	✓	✓	x	x	x
Carbon Dioxide liquid	—	✓	✓	✓	■	x	x	x
Carbon Bisulphide	✓	—	✓	—	—			x
Chloride of Barium	—	✓	■	✓	✓	x	x	x
Chromic Acid	—	—	■	■	—			x
Citric Acid	—	■	✓	—	■	x	x	
Creosote	✓	—	✓	—	—	x		
Cresol	■	✓	✓	—	—	x		
Cresol, Cresylic Acid	✓	—	✓	—	—	x		
Cupric Chloride	✓	—	■	—	—	x	x	x
Cyclohexane	✓	—	✓	■	✓			x
Dimethylamine	✓	—	✓	—	—	x		
Emulsion. (Water/Oil)	■	✓	✓	✓	✓	x	x	
Ether	✓	✓	✓	✓	✓			x

	Matériau					Seal Joint		
	Steel zinc plated Acier zingué	Brass - Lation	Inox 316 Ti ou Similaire	Polyamide 11/12 PA 11/12	Polyacétal	NBR Nitrile	FPM Viton	EPDM
Ethyl Alcohol	✓	—	✓	✓	✓	x		x
Ethylene	✓	✓	✓	✓	✓			x
Formalin	✓	✓	✓	—	■	x	x	x
Formic Acid	—	■	✓	—	—			x
Frigen	✓	✓	✓	✓	✓	x	x	
Gasoline, Refined	✓	—	✓	—	—	x	x	
Gas, Blast Furnace	■	✓	✓	—	■			x
Gas, Coal	■	✓	✓	✓	✓			x
Gas, Coke Oven	■	✓	✓	■	■	x		
Gas, Lighting	✓	✓	✓	✓	✓	x	x	
Gas, Naphtalene content	✓	✓	✓	✓	■	x	x	
Gas, Natural	✓	✓	✓	✓	✓	x	x	
Gas, Town	✓	✓	✓	✓	✓	x		
Gear Oil	✓	—	✓	—	✓	x	x	
Glucose	—	✓	✓	✓	✓	x	x	x
Glycerine	✓	✓	✓	✓	✓	x	x	x
Glycol	✓	✓	✓	✓	✓	x		x
Helium	✓	✓	✓	✓	✓	x	x	x
Hexane	✓	—	✓	✓	■	x	x	
Hydrocarbons	✓	✓	✓	✓	✓	x	x	
Hydrogen	✓	✓	✓	✓	■	x	x	
Hydrogen Gas	✓	—	✓	—	—	x	x	
Hydrogen Sulphide, Humid	—	■	✓	✓	—			x
Hydrogen Sulphide, dry	—	✓	✓	✓	✓			x
Hyrogen Peroxide 30%	—	—	✓	✓	—			x
Isoproyl Alcohol	✓	—	✓	■	✓	x	x	x
Kerosene, JP 1	✓	✓	✓	✓	✓	x	x	
Keton, Methytl Ethyl	✓	✓	✓	✓	✓			x
Latex, liquid up to 130°C	✓	✓	✓	■	■			x
Lubricating Oil	✓	✓	✓	✓	✓	x	x	
Lye, Caustic	—	✓	✓	✓	■			x
Lye, Hyochorous Acid	—	—	✓	—	■			
Lye, Pickling	—	MS60	✓	■	■			x
Magnesium Carbonate	✓	—	✓	✓	✓	x	x	x
Magnesium Hydroxide	✓	✓	✓	✓	✓	x	x	x
Magnesium Sulphate. M.Sulfat	—	—	✓	✓	✓	x	x	x
Mercury	✓	—	✓	✓	✓	x	x	x
Methane	✓	✓	✓	✓	✓	x	x	
Methanol	✓	✓	✓	✓	✓	x		x
Methyl Alcohol	✓	✓	✓	■	✓	x		x
Methyl Ethyl Ketone	✓	—	✓	✓	✓			x

**QUICK RELEASE COUPLINGS FOR ALL KINDS OF FLUIDS
COUPLEUR RAPIDE TOUS FLUIDES**

One Handed connection and disconnection
Ei Connexion & déconnexion à une main

SERIE 107 ISO 6150 - C

NBR (Nitrile)

Main properties: Resistant to oil and petrol good ageing characteristics, high abrasion resistance.

Applications standards
Bonne résistance mécanique
Bonne résistance aux hydrocarbures

FPM (Viton)

Main properties: Outstanding heat resistant performance, excellent resistance to oils, chemicals, solvent, active oxygen, and weather.

Bonne résistance chimique
Bonne résistance à la T°
Bonne résistance aux carburants
Bonne résistance aux solvants

EPDM (Ethylène - Propylène)

Main properties: Ethylene Propylene, High mechanical strength, excellent resistance to high and low temperatures and to active oxygen and weather. Good resistance to chemical media.

Bonne résistance à la T°
Bonne résistance à l' eau froide
Bonne résistance à l' eau chaude
Bonne résistance à la vapeur
Recommandé pour glycol

PTFE (Teflon)

For very aggressive media special constructions with PTFE seals (Teflon) are available.

Recommandé pour les applications chimiques très agressives
Très Résistant à basse température
Très résistant à haute température

	Matériau					Seal Joint		
	Steel zinc plated Acier zingué	Brass - Lation	AISI 316 Ti or similar Inox 316 Ti	Polyamide 11/12	Polyamid 11/12 Polyacétal - Polyacétal	NBR Nitrile	FPM Viton	EPDM
Methyl Benzene	✓	—	✓	✓	✓		x	
Milk	✓	—	✓	✓	✓	x	x	
Napta	✓	—	✓	✓	✓	x	x	
Naptalene	✓	✓	✓	✓	✓		x	
Naptenic, Acid	✓	—	✓	—	—	x	x	
Nitrate of Ammonium	✓	—	✓	—	—	x	x	x
Nitric Acid, up to 35°C	—	✓	✓	—	—		x	
Nitrogen	✓	✓	✓	✓	✓	x	x	x
Nitro-Solution (no synthetic resin thinners)	✓	✓	✓	—	✓			x
Oil, Coal Tr	✓	—	✓	✓	■		x	
Oil, Crude	✓	✓	✓	✓	✓	x	x	
Oil, Diesel	✓	✓	✓	✓	✓	x		
Oil, Diesel up to 120°C	—	✓	✓	■	—		x	
Oil, Fuel up to 100°C	✓	✓	✓	■	—	x	x	
Oil, up to 200°C/ 300°Cup to (special type)	✓	■	✓	—	—			FFKM
Oil, Fuel 5x5	✓	✓	✓	■	✓		x	
Oil, Hydraulic Chlorinated	■	■	✓	—	■		x	
Oil, Hydraulic up to 120°C	✓	✓	✓	■	■	x	x	
Oil, Linseed	✓	✓	✓	✓	✓	x	x	
Oil, Mineral	■	✓	✓	✓	✓	x	x	
Oil, Transformer	■	■	✓	✓	■	x		
Oleic Acid	✓	—	✓	✓	✓	x	x	
Oxalic Acid	■	■	✓	✓	✓		x	x
Oxygen, fat free	—	✓	✓	✓	■			x
Paraffin	✓	✓	✓	✓	✓	x		
Paraffin, (Wax)	✓	✓	✓	✓	✓	x		
Pentachlorophenole	✓	—	—	—	—		x	
Petrol Ether	—	✓	✓	✓	✓	x		
Petrol	✓	✓	✓	✓	✓	x		
Phenol Solution	■	✓	✓	—	—			
Phosphoric Acid 10%	—	—	✓	—	—		x	x
Potassium Cyanide	✓	—	✓	■	■		x	x
Potassium Dichromate	✓	—	✓	—	■		x	x
Potassium Sulphate	✓	—	✓	—	—	x	x	x
Potassium Hydroxide	✓	—	✓	■	■			x
Propane	✓	✓	✓	✓	✓	x	x	
Prussic Acid	✓	—	✓	—	—			x
Salt Solution	—	■	■	✓	■			x
Sea Water	—	■	✓	—	—	x	x	x

	Matériau					Seal Joint		
	Steel zinc plated Acier zingué	Brass - Lation	Inox 316 Ti ou Similaire	Polyamide 11/12 PA 11/12	Polyacétal	NBR Nitrile	FPM Viton	EPDM
Soap Solution	—	✓	✓	✓	✓	x	x	x
Soda Solution	—	■	✓	✓	■	x	x	x
Sodium Acetate	—	—	✓	✓	✓	x		x
Sodium Bicarbonate	—	—	■	✓	✓		x	x
Sodium Carbonate	✓	—	✓	✓	✓	x	x	x
Sodium Chloride	✓	—	✓	✓	✓	x	x	x
Sodium Cyanide	✓	—	✓	—	■			x
Sodium Sulphide	✓	■	✓	—	—		x	x
Steam, up to 150°C	■	■	✓	—	—			x
Steam, up to 250°C	■	■	✓	—	—			PTFE
Sulphide of barium	✓	■	✓	✓	—	x	x	x
Sulphur Dioxide, Gas	—	✓	✓	—	—			x
Sulphuret of Carbon	—	✓	✓	—	✓			x
Syntetic Resin Thinners (no nitrosolution)	✓	✓	✓	■	■			x
Tar	✓	✓	✓	✓	✓	x	x	
Tetrachloride of Titanium	✓	—	✓	—	—			x
Toluol, dry	■	✓	✓	✓	✓			x
Trichlorethylene	✓	■	✓	✓	—			x
Turbine Fuel, BP: ATK 2494, ESSO:MIL-F56/16, SHELL:ATF 650	✓	✓	✓	✓	■	x	x	
Turbine Oil, Esso:35	✓	✓	✓	✓	■	x	x	
Turb-oil 1 S (MILL 7808)	■	■	✓	✓	■	x	x	
Vacuum (Strengthened Valve Springs)	✓	✓	✓	✓	✓			
Vegetable Oil	✓	—	✓	✓	✓	x	x	x
Water, Distilled	—	—	✓	✓	✓			x
Water, Deionized	—	—	✓	—	—	x		x
Water, Demineralised	—	—	✓	—	—			x
Water, up to 80°C	■	✓	✓	■	■	x	x	x
Water, over 80°C	■	✓	✓	■	—			x
Water, Cooling	■	■	✓	✓	■	x	x	
Xylene	✓	✓	✓	✓	✓			x

**QUICK RELEASE COUPLINGS FOR ALL KINDS OF FLUIDS
COUPLEUR RAPIDE TOUS FLUIDES**

One Handed connection and disconnection
Ei Connexion & déconnexion à une main

SERIE 107 ISO 6150 - C

There are different types according to flow type. Différentes configurations d'obturation selon les débits voulus

<p>Standard Serie / Série Standard</p> <p>Single Shut - off / Simple obturation</p> <p>(Coupler with valve, plug without valve) (Coupleur à clapet - embout sans clapet)</p>	<p>B Serie / Série B</p> <p>Double Shut - off / Double obturation</p> <p>(Coupler and plug with valve) (Coupleur et embout avec clapet)</p>	<p>F Serie / Série F</p> <p>Full Flow / Passage Libre</p> <p>(Coupler and plug without valve) (Coupleur et embout sans clapet)</p>	<p>S Serie / Série S</p> <p>Single Shut-off and Self venting Simple obturation sécurité</p> <p>(Coupler with valve, plug without valve) (Coupleur à clapet - embout sans clapet)</p>
--	---	--	--

B Type / Série B

B - Type (Double Shut off Couplers)
While letting in the coupler - valf a pin open the stop valve in fastener fitting and releases the flow. Please, order for mutual blocking of coupler - systems always the B execution, because a pin valve - fastener fitting can not be combined with an single shut off couplers (no flow)

Série B (Double obturation)
Quand connecte l'embout, son clapet s'ouvre grâce au pointeau du coupleur Dans tous les cas de la fonction double obturation, il faut impérativement utiliser un embout double obturation (Version B)

F Type / Série F

F - Type (Full Flow Quick Release Couplers)
Plug and socket without valve. Please, order for mutual blocking of coupler - systems always the F execution.
Série F (Coupleur et embout sans clapet)
Toujours utiliser un coupleur passage libre et un embout passage libre

S Type / Série S

S - Type (Self Venting)
TST couplers of the Serie are equipped normally with an additional safety - lock system and self venting.

1st push on button : venting 1st push on button causes venting of the plug and hose and the valve closes whilst the plug remains connected.
2nd push on button : disconnection Because the hose has already vented, this 2nd push on the button allows disconnection of the plug from the socket without violent ejection and therefore without hose whip.

Les coupleurs série S sont équipés du système Safety Lock

Première pression sur le bouton :
Décompression automatique du flexible
Deuxième pression sur le bouton :
Dégagement du flexible sans risque

A	Aluminium	Aluminium
B	Brass	Laiton
C	Steel	Acier
E	EPDM seal	Joint EPDM
G	Parallel gas thread (BSP)	Filetage cylindrique (BSP)
H	Case hardening	Durci
J	Silicone seal	Joint Silicone
K	Chrome plated	Finition chromée
L	CR seal (neoprene)	Joint Neoprène
Ni	NBR seal (nitrile)	Joint Nitrile
N	Nickel plated	Finition nickelée
P	Teflone seal (PTFE)	Joint PTFE
R	Red Colour	Filetage conique
S	Stainless steel AISI(303=S3,420=S4,.316L=S6)	Acier inoxydable AISI (303=S3,420=S4,.316L=S6)
T	Sealing coat on the thread	Filetage téfloné
V	Fluorocarbon (FFP)	Joint Viton (FPM)
Y	Yellow Colour	Taune
Z	Zinc Plated	Finition zinguée
W	Perfluoroelastomer (FFPM)	Joint perfluoré (FFPM)
X	Without plating	Sans traitement de surface
PS	Plastic	Plastique
VA	Vacuum	Vide

Attention:
For optimal functioning, it is essential to use sockets and plugs of the same materials.

Pour un fonctionnement optimal, il est essentiel d'utiliser coupleur & embout de même construction

For optional orders please add the symbol of your option end of the order no.
Pour commander des options, ajouter le symbole en fin de référence

- Seals - Joints:
- E - Ethylene - propylene
 - J - Fluorosilicone (FMQ)
 - P - Téflon (PTFE)
 - W - Perfluoré (FFKM)
 - L - Chloroprene (CR)
 - M - Nitrile (NBR)
 - V - Viton (FPM)



● **tst 107.03** ●

Body Size / Passage
ø3mm / 7mm²



● **tst 107.06** ●

Body Size / Passage
ø5.5mm / 23,5mm²

■ SERIE 107 ISO 6150 - C

Standard Serie / Série Standard:

argely stainless steel with 17 % chrome content.
coupling back adaptor: anti-corrosion threaded steel Various
ases, oils, hydrocarbons...

nox à 17% de chrome Pression maxi: 50 bars
our utilisation air, gaz, hydrocarbures

S4 Serie / Série S4:

nox à 17% de chrome Pression maxi: 50 bars
our utilisation air, eau, gaz, huiles...

S6 Serie / Série S6:

ISI 316L stainless steel with various corrosive gases, sea water,
arge number of chemical products ina corrosive environment.

nox AISI 316L Pression maxi: 15 bars
our utilisation produits chimiques,
nvironnement corrosif

H4 Serie / Série H4:

nox à 17% de chrome et
nox AISI 316L
ression maxi: 300, 350 & 450 bars
our utilisation haute pression
au et gaz

H6 Serie / Série H6:

ISI 316L stainless steel Plug body and push button high
esistance stainless steel. High pressure liquids and gases,
ompressed air with demanding resistance to corrosion
equirements or decontamination.

nox AISI 316L
ression maxi: 300, 350 & 450 bars
our utilisation haute presion
au et gaz
nvironnement corrosif

VA Serie / Série VA:

Internal components are AISI 316L stainless steel.
Proposed for primary vacuum to 1.10-3 torr and for all
applications demanding high integrity leak tightness.
(Standard product is for Normal vacuumed purposes)

Préconiser pour le vide primaire 1.10-3
Et pour toute utilisation en milieu étanche
Le standard est utilisé pour un vide "normal"

Socket Coupleur	Unvalved plug Embout sans clapet	Valved plug Embout avec clapet
standard	standard	standard / S4
S4	standard	S4
S6	S6	S6
S4 / H4	standard	S4 / H4
S6 / H6	S6 / H6	S6 / H6
S4 / VA	standard	S4 / VA



● **tst 107.08** ●
Body Size / Passage
ø8mm / 50mm²

● **tst 107.11** ●
Body Size / Passage
ø11mm / 95mm²

● **tst 107.19** ●
Body Size / Passage
ø19mm / 283.5mm²

SERIE 107 ISO 6150 - C ■

Safety keys Couplers / Clés de sécurité

10 safety keys

- to prevent all errors of connection between:
- different gases (risk of explosion)
- different fluids
- to provide as systematic reference mark on the circuits.

10 clés de sécurité

- Pour prévenir toute erreur de connexion
- Entre gaz (risque d'explosion)
- Entre fluides
- Repérage organisé des circuits

References for Safety keys Couplers

Please add KEY Code (K..) end of the order no of the products.
(Ex: 107.03 EG 10 K00)

Referencement des clés de sécurité

Ajouter le code couleur à la fin de la référence des produits
Ex: 107.03EG10K00

YELLOW/ JAUNE - 180°

CODE : K00



VIOLET / VIOLET - 165°

CODE : K15



RED/ROUGE - 150°

CODE : K30



GREEN/VERT - 135°

CODE : K45



BLUE/BLEU - 120°

CODE : K60



BROWN/MARRON - 105°

CODE : K75



BLACK/NOIR - 90°

CODE : K90



RED-BLACK/ROUGE-NOIR - 80°

CODE : K100



RED-GREEN/ROUGE-VERT - 70°

CODE : K110



RED-YELLOW/ROUGENOIR - 60°

CODE : K120



SAFETY KEYS COUPLERS ARE NOT FOR SALE IN GERMANY

Colour disc for built - in sockets Disque de couleur sur coupleur traversée de cloison

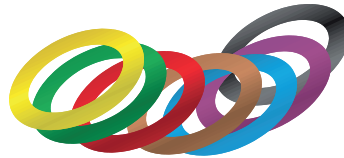
Colour disc for built - in sockets
for immediate visual identification of circuits

Disque de couleur sur coupleur traversée de cloison
Pour identification visuelle immédiate des circuits



H00 | H15 | H30 | H45 | H60 | H75 | H90

107.11 + - + + + - +



-  Yellow / Jaune H00
-  Violet / Violet H15
-  Red / Rouge H30
-  Green / Vert H45
-  Blue / Bleu H60
-  Brown / Marron H75
-  Black / Noir H90

Safety keys Couplers / Options



Protection against dirt ingress code PK

In connected position the Chloroprene (CR) protector protects the functional components of the sockets against dirty and other external pollutants.

It must be combined with a YD push button.

Operating temperatures:
-20° C to + 90° C
(Not available for 107.03)

Protection anti-poussiera Code PK

Montée sur le coupleur, cette option en CR protège les pièces fonctionnelles contre les poussières ou autres agents extérieurs.

Doit être montée sur l'option YD
T°: -20° C to + 90° C

(Non disponible pour 107.03)



Raised push button code YD

Recommended for frequent connection / disconnection or use when wearing safety gloves.

Bouton dépassant code YD

Recommandé pour de fréquentes Connexion - déconnexion ou utilisation avec des gants.



Fixing device for socket dust cap code ZK

Fixation du bouchon de protection
Sur le coupleur
Code ZK



Safety Button Code ED

1. Pull back safety slider.
2. Push button.

Boutonde sécurité Code ED

1. Tirer le bouton
2. Appuyer sur le bouton

QUICK RELEASE COUPLINGS FOR ALL KINDS OF FLUIDS
COUPLEUR RAPIDE TOUS FLUIDES

One Handed connection and disconnection
Connexion & déconnexion à une main

SERIE 107 ISO 6150 - C

Dust Caps - Bouchon de protection



Dust caps for couplings
Bouchon pour coupleur

107.11 KG 00



Dust caps for plugs
Bouchon pour embout

107.11 KU 00



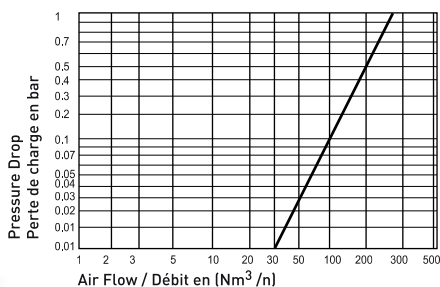
Dust caps for plugs (PP)
Bouchon pour embout en Polypropylène

107.11 UTK 00

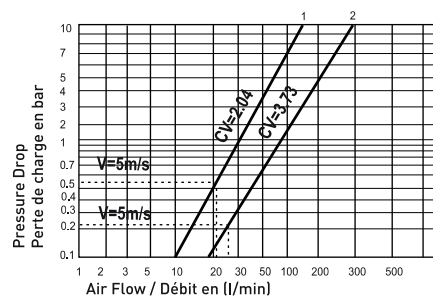
SERIE 107.11

Couplings & Plugs - Coupleurs & Embouts	Standard Serie	S4 Serie	S6 Serie	H4 Serie	H6 Serie	VA Serie
Nominal Ø (mm) - Diamètre nominal	11	11	11	11	11	11
Cross section (mm²) - Section de passage	95	95	95	95	95	95
Max. Working Press. - Pression maximale	Bar	50	50	15	350	350
	PSI	725	725	217	5080	5080
O-Ring / Joint (100°C)	NBR	Option - Option				

Pneumatic charts flow rate/Pressure drop from the single shut-off system
Courbe pneumatique débit/perte de charge
Coupleur simple obturation



Hydraulic charts flow rate/Pressure drop
Courbe hydraulique débit/perte de charge



QUICK RELEASE COUPLINGS FOR ALL KINDS OF FLUIDS
COUPLEUR RAPIDE TOUS FLUIDES

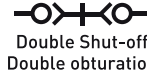
One Handed connection and disconnection
Connexion & déconnexion à une main



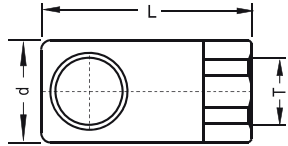
SERIE 107 ISO 6150 - C

(B - SERIE)

(F - SERIE)

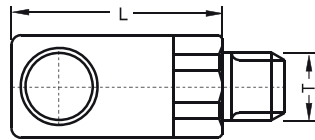


Couplings / Coupleurs

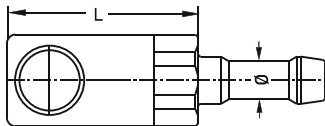


Couplings Female Thread
Coupleur taraudé

* Conical / Conique



Couplings Male Thread
Coupleur fileté cylindrique



Couplings for Rubber Hose
Coupleur cannelé

Couplings / Coupleurs	Ø Nominal Dia NW	Connection Raccord (T)	Single Shut-off Simple obturation	(B - SERIE) Double Shut-off Double obturation	(F - SERIE) Full Flow Passage libre	d (mm)	L (mm)
			Order No/Référence	Order No/Référence	Order No/Référence		
Couplings Female Thread Coupleur taraudé	11	3/8" BSP	107.11 DG 17	107.11 DGB 17	107.11 DGF 17	38	76
		3/8" NPT	107.11 NG 17	107.11 NGB 17	107.11 NGF 17	38	74
		1/2" BSP	107.11 DG 21	107.11 DGB 21	107.11 DGF 21	38	78
		1/2" BSPT*	107.11 QG 21	107.11 QGB 21	107.11 QGF 21	38	78
		1/2" NPT	107.11 NG 21	107.11 NGB 21	107.11 NGF 21	38	76
		3/4" BSP	107.11 DG 26	107.11 DGB 26	107.11 DGF 26	38	86
		3/4" NPT	107.11 NG 26	107.11 NGB 26	107.11 NGF 26	38	80
		7/8"-14UN	107.11 UG 22	107.11 UGB 22	107.11 UGF 22	38	86
		Couplings Male Thread Coupleur fileté cylindrique	11	3/8" BSP	107.11 EG 17	107.11 EGB 17	107.11 EGF 17
3/8" NPT	107.11 TG 17			107.11 TGB 17	107.11 TGF 17		72
1/2" BSP	107.11 EG 21			107.11 EGB 21	107.11 EGF 21		72
1/2" NPT	107.11 TG 21			107.11 TGB 21	107.11 TGF 21		72
3/4" BSP	107.11 EG 26			107.11 EGB 26	107.11 EGF 26		72
3/4" NPT	107.11 TG 26			107.11 TGB 26	107.11 TGF 26		72
Couplings for Rubber Hose Coupleur cannelé	11	Ø 8mm	107.11 HG 08	107.11 HGB 08	107.11 HGF 08		85
		Ø 10mm	107.11 HG 10	107.11 HGB 10	107.11 HGF 10		85
		Ø 13mm	107.11 HG 13	107.11 HGB 13	107.11 HGF 13		85
		Ø 16mm	107.11 HG 16	107.11 HGB 16	107.11 HGF 16		85
		Ø 19mm	107.11 HG 19	107.11 HGB 19	107.11 HGF 19		85

QUICK RELEASE COUPLINGS FOR ALL KINDS OF FLUIDS
COUPLEUR RAPIDE TOUS FLUIDES

One Handed connection and disconnection
Connexion & déconnexion à une main



SERIE 107 ISO 6150 - C ■

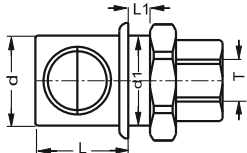
(B SERIE)

(F SERIE)



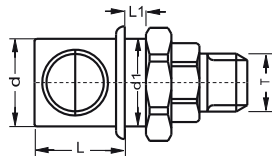
Built - in Couplings
Coupleurs traversée de cloison

Nominal Dia NW	Connection Raccord (T)	Single Shut-off Simple obturation Order No/Référence	Double Shut-off Double obturation Order No/Référence	Full Flow Passage libre Order No/Référence	d (mm)	d1 (mm)	L (mm)	L1 (mm)



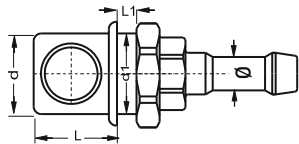
Couplings Female Thread
Coupleur taraudé
traversée de cloison

11	3/8" BSP	1071.11 DG 17	1071.11 DGB 17	1071.11 DGF 17	38	38	36.5	12.5
	3/8" NPT	1071.11 NG 17	1071.11 NGB 17	1071.11 NGF 17	38	38	36.5	12.5
	1/2" BSP	1071.11 DG 21	1071.11 DGB 21	1071.11 DGF 21	38	38	36.5	12.5
	1/2" NPT	1071.11 NG 21	1071.11 NGB 21	1071.11 NGF 21	38	38	36.5	12.5
	3/4" BSP	1071.11 DG 26	1071.11 DGB 26	1071.11 DGF 26	38	38	36.5	12.5
	3/4" NPT	1071.11 NG 26	1071.11 NGB 26	1071.11 NGF 26	38	38	36.5	12.5
	7/8"-14UN	1071.11 UG 22	1071.11 UGB 22	1071.11 UGF 22	38	38	36.5	12.5



Couplings Male Thread
Coupleur fileté cylindrique
traversée de cloison

11	3/8" BSP	1071.11 EG 17	1071.11 EGB 17	1071.11 EGF 17	38	38	36.5	12.5
	3/8" NPT	1071.11 TG 17	1071.11 TGB 17	1071.11 TGF 17	38	38	36.5	12.5
	1/2" BSP	1071.11 EG 21	1071.11 EGB 21	1071.11 EGF 21	38	38	36.5	12.5
	1/2" NPT	1071.11 TG 21	1071.11 TGB 21	1071.11 TGF 21	38	38	36.5	12.5
	3/4" BSP	1071.11 EG 26	1071.11 EGB 26	1071.11 EGF 26	38	38	36.5	12.5
	3/4" NPT	1071.11 TG 26	1071.11 TGB 26	1071.11 TGF 26	38	38	36.5	12.5



Couplings for Rubber Hose
Coupleur cannelé traversée de cloison

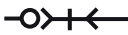

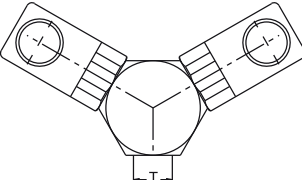
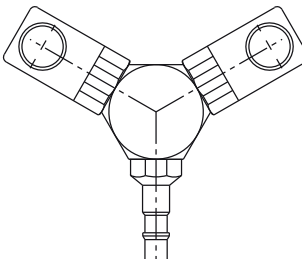
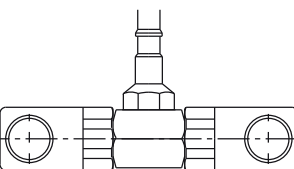
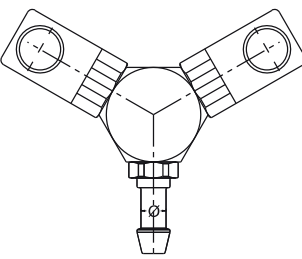
11	Ø 8mm	1071.11 HG 08	1071.11 HGB 08	1071.11 HGF 08	38	38	36.5	12.5
	Ø 10mm	1071.11 HG 10	1071.11 HGB 10	1071.11 HGF 10	38	38	36.5	12.5
	Ø 13mm	1071.11 HG 13	1071.11 HGB 13	1071.11 HGF 13	38	38	36.5	12.5
	Ø 16mm	1071.11 HG 16	1071.11 HGB 16	1071.11 HGF 16	38	38	36.5	12.5
	Ø 19mm	1071.11 HG 19	1071.11 HGB 19	1071.11 HGF 19	38	38	36.5	12.5

QUICK RELEASE COUPLINGS FOR ALL KINDS OF FLUIDS
COUPLEUR RAPIDE TOUS FLUIDES

One Handed connection and disconnection
Connexion & déconnexion à une main



SERIE 107 ISO 6150 - C ■

Built - in Couplings Coupleurs répartiteur	Ø Nominal Dia NW	Connection / Raccord (T/Ø)		
			Single Shut-off / Simple obturation Order No/Référence	Full Flow / Passage libre Order No/Référence
 Fixed Y Couplings Coupleur en Y fixe	11	3/8" BSP 1/2" BSP 3/4" BSP	107.11 2GS 17	107.11 2GSF 17
			107.11 2GS 21	107.11 2GSF 21
			107.11 2GS 26	107.11 2GSF 26
 Mobile Y Couplings Coupleur en Y mobile	11		107.11 2GU 00	107.11 2GUF 00
 Mobile T Couplings Coupleur en Té mobile	11		107.11 2GU 01	107.11 2GUF 01
 Rubber Hose Y Couplings Coupleur en Y mobile	11	Ø 13mm Ø 16mm Ø 19mm	107.11 2GH 13 107.11 2GH 16 107.11 2GH 19	107.11 2GHF 13 107.11 2GHF 16 107.11 2GHF 19

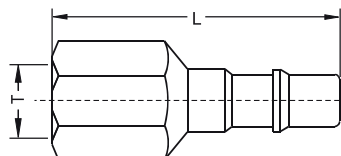
QUICK RELEASE COUPLINGS FOR ALL KINDS OF FLUIDS
COUPLEUR RAPIDE TOUS FLUIDES

One Handed connection and disconnection
Connexion & déconnexion à une main



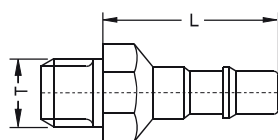
SERIE 107 ISO 6150 - C ■

Unvalved Plugs
Embout sans clapet



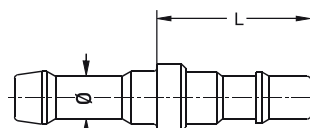
Plugs Female Thread
Embout taraudé

* Conical / Conique



Plugs Male Thread
Embout fileté cylindrique

* Conical / Conique



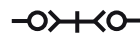
Plugs for Rubber Hoses
Embout cannelé

Ø Nominal Dia NW	Connection Raccord (T / Ø)	Single Shut-off / Passage Libre		L (mm)
		Order No/Référence		
11	1/4" BSP	107.11 DU 13	61	
	3/8" BSP	107.11 DU 17	61	
	3/8" NPT	107.11 NU 17	61	
	1/2" BSP	107.11 DU 21	65	
	1/2" BSPT*	107.11 QU 21	65	
	1/2" NPT	107.11 NU 21	65	
	3/4" BSP	107.11 DU 26	65	
	3/4" NPT	107.11 NU 26	65	
	11	3/8" BSP	107.11 EU 17	53
		3/8" BSPT*	107.11 RU 17	53
3/8" NPT		107.11 TU 17	53	
1/2" BSP		107.11 EU 21	53	
1/2" BSPT*		107.11 RU 21	53	
1/2" NPT		107.11 TU 21	53	
3/4" BSP		107.11 EU 26	53	
1/2" BSPT*		107.11 RU 26	53	
3/4" NPT		107.11 TU 26	53	
11		Ø 6mm	107.11 HU 06	45
	Ø 8mm	107.11 HU 08	45	
	Ø 10mm	107.11 HU 10	45	
	Ø 13mm	107.11 HU 13	45	
	Ø 16mm	107.11 HU 16	45	
	Ø 19mm	107.11 HU 19	45	



SERIE 107B ISO 6150 - C ■

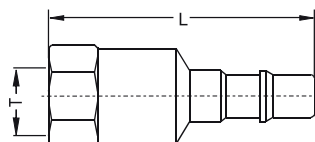
(B-SERIE)



Order No/Référence

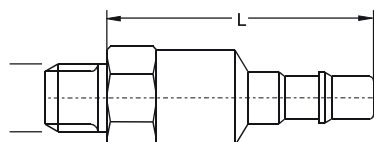
L
(mm)

Shut-off Plugs
Embout à clapet

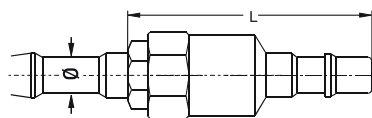


Plugs With Female Thread
Embout taraudé à clapet

* Conical / Conique



Plugs With Male Thread
Embout fileté cylindrique à clapet



Plugs for Rubber Hoses
Embout cannelé à clapet

Ø Nominal Dia NW	Connection Raccord (T / Ø)	Order No/Référence	L (mm)
11	3/8" BSP	107.11 DUB 17	89
	3/8" NPT	107.11 NUB 17	88
	1/2" BSP	107.11 DUB 21	94
	1/2" BSPT*	107.11 QUB 21	95
	1/2" NPT	107.11 NUB 21	95
	3/4" BSP	107.11 DUB 26	97
	3/4" NPT	107.11 NUB 26	95
	7/8" UN 14	107 11 UUB 22	98
11	3/8" BSP	107.11 EUB 17	83.5
	3/8" NPT	107.11 TUB 17	83.5
	1/2" BSP	107.11 EUB 21	83.5
	1/2" NPT	107.11 TUB 21	83.5
	3/4" BSP	107.11 EUB 26	83.5
	3/4" NPT	107.11 TUB 26	83.5
11	Ø 6mm	107.11 HUB 06	101
	Ø 8mm	107.11 HUB 08	101
	Ø 10mm	107.11 HUB 10	101
	Ø 13mm	107.11 HUB 13	101
	Ø 16mm	107.11 HUB 16	101
	Ø 19mm	107.11 HUB 19	101

SELF VENTING TYPE
SÉCURITÉ ANTI COUP DE FOUET

One Handed connection and disconnection
Connexion & déconnexion à une main

SERIE 107S ISO 6150 - C

SELF VENTING TYPE / SICHERHEITS-SCHNELLKUPPLUNG

TST 107S Quick release safety couplings for compressed air consisting of an 107S socket and 107 plug...

Construction:
Single shut - off system. Plug with an open passage.
The functional parts have a great resistance to wear and tear, shocks and corrosion:
- Stainless steel coupling bodies
- plug (13% chromium, content hardened and precision ground),
- large all - in - once steel push button (13% hardened chromium content),
- Nitrile seal (NBR)

La serie TST 107S - coupleur de securite anti coup de fouet est a associer avec un embout 107 passage libre

Construction:
Coupleur simple obturation - Embout passage libre
Corps de coupleur : Acier inox à 17% de chrome
Embout : Acier inox à 13% de chrome trempé, rectifié
Bouton : Acier inox à 13% de chrome trempé
Joints en Nitrile

TWO STAGE PUSH-BUTTON COUPLERS

- 1 st impulse on the push button: decompression
 - 2 st impulse on the push button: releasing plug
- The function of the safety prevents the possibility of dangerous hose-whip.

COUPLEUR 2 PRESSIONS

- Première pression : Décompression du flexible
- Deuxième pression : Désaccouplement de l'embout

La fonction sécurité prévient toute possibilité de coup de fouet



● **tst 107S.06** ●
Body Size / Passage
ø5.5mm / 23,5mm²



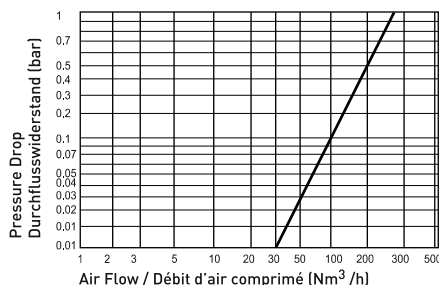
● **tst 107S.08** ●
Body Size / Passage
ø8mm / 50mm²



● **tst 107S.11** ●
Body Size / Passage
ø11mm / 95mm²

SERIE 107S.11

Pneumatic charts flow rate/Pressure drop from the single shut-off system
Courbe pneumatique débit/perte de charge
Coupleur simple obturation



Couplings & Plugs - Coupleur et embout

Nominal Ø (mm) - Ø Nominal
Cross section (mm²) - Section de passage

Max. Working Press. -
Pression maximale

O-Ring / Joint (100°C)

Standard
Serie

11 mm
95 mm²

16
232

NBR

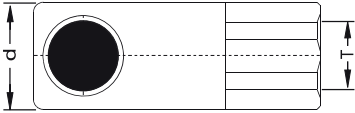
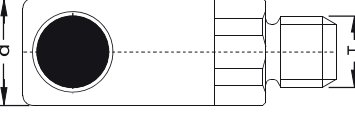
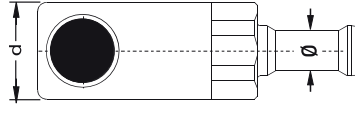
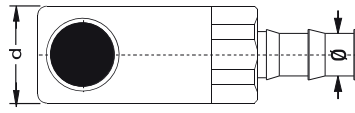
One Handed connection and disconnection
Connexion & déconnexion à une main



SERIE 107S ISO 6150 - C



Single Shut-off / Passage Libre
Order No/Référence

Couplings / Coupleurs	Ø Nominal Dia NW	Connection Raccord (T / Ø)	Single Shut-off / Passage Libre Order No/Référence	d (mm)	L (mm)
 Couplings Female Thread Coupleur taraudé	11	3/8" BSP	107.11 DGS 17	33	33
		3/8" NPT	107.11 NGS 17		
		1/2" BSP	107.11 DGS 21		
		1/2" NPT	107.11 NGS 21		
		3/4" BSP	107.11 DGS 26		
		3/4" NPT	107.11 NGS 26		
 Couplings Male Thread Coupleur fileté cylindrique	11	3/8" BSP	107.11 EGS 17	33	33
		1/2" BSP	107.11 EGS 21		
		3/4" BSP	107.11 EGS 26		
 Couplings with Rubber Hoses Coupleur cannelé	11	Ø 10mm	107.11 HGS 10	33	33
		Ø 13mm	107.11 HGS 13		
		Ø 16mm	107.11 HGS 16		
		Ø 19mm	107.11 HGS 19		
 Couplings with Push-Lock Hoses Coupleur cannelé pour tube auto serrant	11	Ø 10mm	107.11 FGS 10	33	33
		Ø 13mm	107.11 FGS 13		
		Ø 16mm	107.11 FGS 16		
		Ø 19mm	107.11 FGS 19		

SELF VENTING TYPE
SÉCURITÉ ANTI COUP DE FOUET

One Handed connection and disconnection
Connexion & déconnexion à une main



SERIE 107S ISO 6150 - C



Single Shut-off / Passage Libre
Order No/Référence

∅
Nominal
Dia
NW

Connection
Raccord
(T / ∅)

d
(mm)

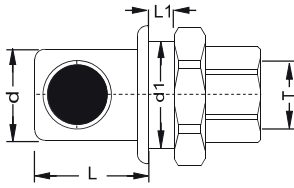
d1
(mm)

L
(mm)

L1
(mm)

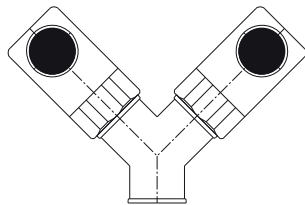
Couplings / Coupleurs

Built - in couplings



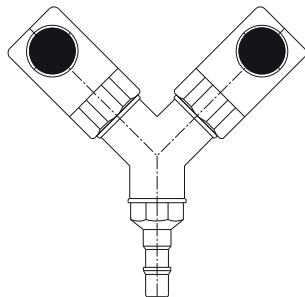
Couplings Female Thread
Coupleur taraudé Traversée de cloison

11	3/8" BSP	1071.11 DGS 17	33	39	36.5	12.5
	3/8" NPT	1071.11 NGS 17	33	39	36.5	12.5
	1/2" BSP	1071.11 DGS 21	33	39	36.5	12.5
	1/2" NPT	1071.11 NGS 21	33	39	36.5	12.5
	3/4" BSP	1071.11 DGS 26	33	39	36.5	12.5
	3/4" NPT	1071.11 NGS 26	33	39	36.5	12.5



Fixed Y Couplings
Coupleur en Y fixe

11	3/8" BSP	107.11 2GSS 17
	1/2" BSP	107.11 2GSS 21
	3/4" BSP	107.11 2GSS 26



Mobile Y Couplings
Coupleur en Y mobile

11		107.11 2GUS 00
----	--	----------------

DBI

GROUPE



QUICK COUPLINGS
COUPLEUR RAPIDE

107

ISO 6150 - C

