

# DBI

## GROUPE

QUICK COUPLINGS  
COUPLEUR RAPIDE

# 107.08

ISO 6150 - C



|                                   |       |
|-----------------------------------|-------|
| JOINT ET MATERIAUX                | 01-02 |
| CARACTERISTIQUE SERIE 107         | 03-04 |
| OPTIONS                           | 05-06 |
| SERIE 107.03                      | 07    |
| COUPLEURS                         | 08    |
| COUPLEURS<br>TRAVERSÉE DE CLOISON | 09    |
| COUPLEURS RÉPARTITEUR             | 10    |
| EMBOUT SANS CLAPET                | 11    |
| EMBOUT À CLAPET                   | 12    |
| SERIE 107S                        | 13-16 |
| SERIE 107SP                       | 17-20 |

**QUICK RELEASE COUPLINGS FOR ALL KINDS OF FLUIDS  
COUPLEUR RAPIDE TOUS FLUIDES**

One Handed connection and disconnection  
Ei Connexion & déconnexion à une main

**SERIE 107** ISO 6150 - C

**NBR (Nitrile)**

Main properties: Resistant to oil and petrol good ageing characteristics, high abrasion resistance.

Applications standards  
Bonne résistance mécanique  
Bonne résistance aux hydrocarbures

**FPM (Viton)**

Main properties: Outstanding heat resistant performance, excellent resistance to oils, chemicals, solvent, active oxygen, and weather.

Bonne résistance chimique  
Bonne résistance à la T°  
Bonne résistance aux carburants  
Bonne résistance aux solvants

**EPDM (Ethylène - Propylène)**

Main properties: Ethylen Propylene, High mechanical strength, excellent resistance to high and low temperatures and to active oxygen and weather. Good resistance to chemical media.

Bonne résistance à la T°  
Bonne résistance à l' eau froide  
Bonne résistance à l' eau chaude  
Bonne résistance à la vapeur  
Recommandé pour glycol

**PTFE (Teflon)**

For very aggressive media special constructions with PTFE seals (Teflon) are available.

Recommandé pour les applications chimiques très agressives  
Très Résistant à basse température  
Très résistant à haute température

|   | Matériau                          |                |                                       |                 |   | Seal Joint  |           |      |
|---|-----------------------------------|----------------|---------------------------------------|-----------------|---|-------------|-----------|------|
|   | Steel zinc plated<br>Acier zingué | Brass - Lation | AISI 316 Ti or similar<br>Inox 316 Ti | Polyamide 11/12 | Polyamid 11/12<br>Polyacétal - Polyacétal | NBR Nitrile | FPM Viton | EPDM |
| Acetate (Ethyl Acetate & Amyl Acetate)  | ✓                                 | ✓              | ✓                                     | ✓               | ✓   |             |           | x    |
| Acetic acid 10%   | —                                 | —              | ✓                                     | —               | ✓   |             |           | x    |
| Acetone   | ✓                                 | ✓              | ✓                                     | ✓               | ✓   |             |           | x    |
| Acetylene   | ✓                                 | ✓              | ✓                                     | ✓               | ✓   | x           | x         | x    |
| Aero Engine Fuel BP, Esso Avgas100/130  | ✓                                 | ✓              | ✓                                     | ✓               | ■   | x           | x         |      |
| Aero Engine Oil BP : AIRO 1210, Esso:AVIATON-120 Shell:AIRO-120, DERD 2487 DERD 2497, DTD 585 | ✓                                 | ✓              | ✓                                     | ✓               | ■   | x           | x         |      |
| Skydrol   | ✓                                 | —              | —                                     | —               | —   |             |           | x    |
| Oronite   | ✓                                 | —              | —                                     | —               | —   |             |           | x    |
| Air, compressed   | ✓                                 | ✓              | ✓                                     | ✓               | ✓   | x           | x         |      |
| Air, hot up to 120°C  | ✓                                 | ✓              | ✓                                     | ■               | —   | x           | x         |      |
| Air, hot up to 200°C  | ✓                                 | ✓              | ✓                                     | —               | —   |             |           | x    |
| Alcohol   | ✓                                 | ✓              | ✓                                     | ✓               | ✓   |             |           | x    |
| Alum  | —                                 | —              | ✓                                     | —               | ✓   | x           | x         | x    |
| Alkalies  | —                                 | ■              | ✓                                     | ✓               | ■   | x           | x         |      |
| Ammonia, Liquid   | ■                                 | —              | ✓                                     | ✓               | —   |             |           | x    |
| Ammonium Sulphate Solution  | —                                 | —              | ✓                                     | ✓               | ■   | x           | x         | x    |
| Amyl Alcohol  | ✓                                 | ✓              | ✓                                     | ✓               | ✓   |             |           | x    |
| Aniline   | ✓                                 | —              | ✓                                     | ■               | —   |             |           | x    |
| Benzole   | ✓                                 | ✓              | ✓                                     | ✓               | ✓   |             |           | x    |
| Borax   | ✓                                 | ✓              | ✓                                     | —               | —   |             |           | x    |
| Bultane   | ✓                                 | ✓              | ✓                                     | ✓               | ✓   | x           | x         |      |
| Bultane   | ✓                                 | —              | ✓                                     | —               | —   | x           | x         |      |
| Butyl Alcohol   | —                                 | ✓              | ✓                                     | ✓               | ✓   |             |           | x    |
| Carbon Dixide   | —                                 | ✓              | ✓                                     | ✓               | ✓   | x           | x         | x    |
| Carbon Dioxide, dry   | —                                 | ✓              | ✓                                     | ✓               | ✓   | x           | x         | x    |
| Carbon Dioxide liquid   | —                                 | ✓              | ✓                                     | ✓               | ■   | x           | x         | x    |
| Carbon Bisulphide   | ✓                                 | —              | ✓                                     | —               | —   |             |           | x    |
| Chloride of Barium  | —                                 | ✓              | ■                                     | ✓               | ✓   | x           | x         | x    |
| Chromic Acid  | —                                 | —              | ■                                     | ■               | —   |             |           | x    |
| Citric Acid   | —                                 | ■              | ✓                                     | —               | ■   | x           | x         |      |
| Creosote  | ✓                                 | —              | ✓                                     | —               | —   |             |           | x    |
| Cresol  | ■                                 | ✓              | ✓                                     | —               | —   |             |           | x    |
| Cresol, Cresylic Acid   | ✓                                 | —              | ✓                                     | —               | —   |             |           | x    |
| Cupric Chloride   | ✓                                 | —              | ■                                     | —               | —   | x           | x         | x    |
| Cyclohexane   | ✓                                 | —              | ✓                                     | ■               | ✓   |             |           | x    |
| Dimethylamine   | ✓                                 | —              | ✓                                     | —               | —   |             |           | x    |
| Emulsion. (Water/Oil)   | ■                                 | ✓              | ✓                                     | ✓               | ✓   | x           | x         |      |
| Ether   | ✓                                 | ✓              | ✓                                     | ✓               | ✓   |             |           | x    |

|                              | Matériau                          |                |                          |                          |            | Seal Joint  |           |      |
|------------------------------|-----------------------------------|----------------|--------------------------|--------------------------|------------|-------------|-----------|------|
|                              | Steel zinc plated<br>Acier zingué | Brass - Lation | Inox 316 Ti ou Similaire | Polyamide 11/12 PA 11/12 | Polyacétal | NBR Nitrile | FPM Viton | EPDM |
| Ethyl Alcohol                | ✓                                 | —              | ✓                        | ✓                        | ✓          | x           |           | x    |
| Ethylene                     | ✓                                 | ✓              | ✓                        | ✓                        | ✓          |             |           | x    |
| Formalin                     | ✓                                 | ✓              | ✓                        | —                        | ■          | x           | x         | x    |
| Formic Acid                  | —                                 | ■              | ✓                        | —                        | —          |             |           | x    |
| Frigen                       | ✓                                 | ✓              | ✓                        | ✓                        | ✓          | x           | x         |      |
| Gasoline, Refined            | ✓                                 | —              | ✓                        | —                        | —          | x           | x         |      |
| Gas, Blast Furnace           | ■                                 | ✓              | ✓                        | —                        | ■          |             |           | x    |
| Gas, Coal                    | ■                                 | ✓              | ✓                        | ✓                        | ✓          |             |           | x    |
| Gas, Coke Oven               | ■                                 | ✓              | ✓                        | ■                        | ■          | x           |           |      |
| Gas, Lighting                | ✓                                 | ✓              | ✓                        | ✓                        | ✓          | x           | x         |      |
| Gas, Naphtalene content      | ✓                                 | ✓              | ✓                        | ✓                        | ■          | x           | x         |      |
| Gas, Natural                 | ✓                                 | ✓              | ✓                        | ✓                        | ✓          | x           | x         |      |
| Gas, Town                    | ✓                                 | ✓              | ✓                        | ✓                        | ✓          | x           |           |      |
| Gear Oil                     | ✓                                 | —              | ✓                        | —                        | ✓          | x           | x         |      |
| Glucose                      | —                                 | ✓              | ✓                        | ✓                        | ✓          | x           | x         | x    |
| Glycerine                    | ✓                                 | ✓              | ✓                        | ✓                        | ✓          | x           | x         | x    |
| Glycol                       | ✓                                 | ✓              | ✓                        | ✓                        | ✓          | x           |           | x    |
| Helium                       | ✓                                 | ✓              | ✓                        | ✓                        | ✓          | x           | x         | x    |
| Hexane                       | ✓                                 | —              | ✓                        | ✓                        | ■          | x           | x         |      |
| Hydrocarbons                 | ✓                                 | ✓              | ✓                        | ✓                        | ✓          | x           | x         |      |
| Hydrogen                     | ✓                                 | ✓              | ✓                        | ✓                        | ■          | x           | x         |      |
| Hydrogen Gas                 | ✓                                 | —              | ✓                        | —                        | —          | x           | x         |      |
| Hydrogen Sulphide, Humid     | —                                 | ■              | ✓                        | ✓                        | —          |             |           | x    |
| Hydrogen Sulphide, dry       | —                                 | ✓              | ✓                        | ✓                        | ✓          |             |           | x    |
| Hyrogen Peroxide 30%         | —                                 | —              | ✓                        | ✓                        | —          |             |           | x    |
| Isoproyl Alcohol             | ✓                                 | —              | ✓                        | ■                        | ✓          | x           | x         | x    |
| Kerosene, JP 1               | ✓                                 | ✓              | ✓                        | ✓                        | ✓          | x           | x         |      |
| Keton, Methyl Ethyl          | ✓                                 | ✓              | ✓                        | ✓                        | ✓          |             |           | x    |
| Latex, liquid up to 130°C    | ✓                                 | ✓              | ✓                        | ■                        | ■          |             |           | x    |
| Lubricating Oil              | ✓                                 | ✓              | ✓                        | ✓                        | ✓          | x           | x         |      |
| Lye, Caustic                 | —                                 | ✓              | ✓                        | ✓                        | ■          |             |           | x    |
| Lye, Hyochorous Acid         | —                                 | —              | ✓                        | —                        | ■          |             |           |      |
| Lye, Pickling                | —                                 | MS60           | ✓                        | ■                        | ■          |             |           | x    |
| Magnesium Carbonate          | ✓                                 | —              | ✓                        | ✓                        | ✓          | x           | x         | x    |
| Magnesium Hydroxide          | ✓                                 | ✓              | ✓                        | ✓                        | ✓          | x           | x         | x    |
| Magnesium Sulphate. M.Sulfat | —                                 | —              | ✓                        | ✓                        | ✓          | x           | x         | x    |
| Mercury                      | ✓                                 | —              | ✓                        | ✓                        | ✓          | x           | x         | x    |
| Methane                      | ✓                                 | ✓              | ✓                        | ✓                        | ✓          | x           | x         |      |
| Methanol                     | ✓                                 | ✓              | ✓                        | ✓                        | ✓          | x           | x         |      |
| Methyl Alcohol               | ✓                                 | ✓              | ✓                        | ■                        | ✓          | x           | x         |      |
| Methyl Ethyl Ketone          | ✓                                 | —              | ✓                        | ✓                        | ✓          |             |           | x    |

**QUICK RELEASE COUPLINGS FOR ALL KINDS OF FLUIDS  
COUPLEUR RAPIDE TOUS FLUIDES**

One Handed connection and disconnection  
Ei Connexion & déconnexion à une main

**SERIE 107** ISO 6150 - C

**NBR (Nitrile)**

Main properties: Resistant to oil and petrol good ageing characteristics, high abrasion resistance.

Applications standards  
Bonne résistance mécanique  
Bonne résistance aux hydrocarbures

**FPM (Viton)**

Main properties: Outstanding heat resistant performance, excellent resistance to oils, chemicals, solvent, active oxygen, and weather.

Bonne résistance chimique  
Bonne résistance à la T°  
Bonne résistance aux carburants  
Bonne résistance aux solvants

**EPDM (Ethylène - Propylène)**

Main properties: Ethylen Propylene, High mechanical strength, excellent resistance to high and low temperatures and to active oxygen and weather. Good resistance to chemical media.

Bonne résistance à la T°  
Bonne résistance à l' eau froide  
Bonne résistance à l' eau chaude  
Bonne résistance à la vapeur  
Recommandé pour glycol

**PTFE (Teflon)**

For very aggressive media special constructions with PTFE seals (Teflon) are available.

Recommandé pour les applications chimiques très agressives  
Très Résistant à basse température  
Très résistant à haute température

|  | Matériau                          |                |                                       |                 |   | Seal Joint  |           |      |
|--|-----------------------------------|----------------|---------------------------------------|-----------------|---|-------------|-----------|------|
|  | Steel zinc plated<br>Acier zingué | Brass - Lation | AISI 316 Ti or similar<br>Inox 316 Ti | Polyamide 11/12 | Polyamid 11/12<br>Polyacétal - Polyacétal | NBR Nitrile | FPM Viton | EPDM |
| Methyl Benzene                               | ✓                                 | —              | ✓                                     | ✓               | ✓   |             | x         |      |
| Milk   | ✓                                 | —              | ✓                                     | ✓               | ✓   | x           | x         |      |
| Napta  | ✓                                 | —              | ✓                                     | ✓               | ✓   | x           | x         |      |
| Naptalene                                    | ✓                                 | ✓              | ✓                                     | ✓               | ✓   |             | x         |      |
| Naptenic. Acid                               | ✓                                 | —              | ✓                                     | —               | —   | x           | x         |      |
| Nitrate of Ammonium                          | ✓                                 | —              | ✓                                     | —               | —   | x           | x         | x    |
| Nitric Acid, up to 35°C                      | —                                 | ✓              | ✓                                     | —               | —   |             | x         |      |
| Nitrogen                                     | ✓                                 | ✓              | ✓                                     | ✓               | ✓   | x           | x         | x    |
| Nitro-Solution (no synthetic resin thinners) | ✓                                 | ✓              | ✓                                     | —               | ✓   |             |           | x    |
| Oil, Coal Tr                                 | ✓                                 | —              | ✓                                     | ✓               | ■   |             | x         |      |
| Oil, Crude                                   | ✓                                 | ✓              | ✓                                     | ✓               | ✓   | x           | x         |      |
| Oil, Diesel                                  | ✓                                 | ✓              | ✓                                     | ✓               | ✓   | x           |           |      |
| Oil, Diesel up to 120°C                      | —                                 | ✓              | ✓                                     | ■               | —   |             | x         |      |
| Oil, Fuel up to 100°C                        | ✓                                 | ✓              | ✓                                     | ■               | —   | x           | x         |      |
| Oil, up to 200°C/ 300°Cup to (special type)  | ✓                                 | ■              | ✓                                     | —               | —   |             |           | FFKM |
| Oil, Fuel 5x5                                | ✓                                 | ✓              | ✓                                     | ■               | ✓   |             | x         |      |
| Oil, Hydraulic Chlorinated                   | ■                                 | ■              | ✓                                     | —               | ■   |             | x         |      |
| Oil, Hydraulic up to 120°C                   | ✓                                 | ✓              | ✓                                     | ■               | ■   | x           | x         |      |
| Oil, Linseed                                 | ✓                                 | ✓              | ✓                                     | ✓               | ✓   | x           | x         |      |
| Oil, Mineral                                 | ■                                 | ✓              | ✓                                     | ✓               | ✓   | x           | x         |      |
| Oil, Transformer                             | ■                                 | ■              | ✓                                     | ✓               | ■   | x           |           |      |
| Oleic Acid                                   | ✓                                 | —              | ✓                                     | ✓               | ✓   | x           | x         |      |
| Oxalic Acid                                  | ■                                 | ■              | ✓                                     | ✓               | ✓   |             | x         | x    |
| Oxygen, fat free                             | —                                 | ✓              | ✓                                     | ✓               | ■   |             |           | x    |
| Paraffin                                     | ✓                                 | ✓              | ✓                                     | ✓               | ✓   | x           |           |      |
| Paraffin, (Wax)                              | ✓                                 | ✓              | ✓                                     | ✓               | ✓   | x           |           |      |
| Pentachlorophenole                           | ✓                                 | —              | —                                     | —               | —   |             | x         |      |
| Petrol Ether                                 | —                                 | ✓              | ✓                                     | ✓               | ✓   | x           |           |      |
| Petrol                                       | ✓                                 | ✓              | ✓                                     | ✓               | ✓   | x           |           |      |
| Phenol Solution                              | ■                                 | ✓              | ✓                                     | —               | —   |             |           |      |
| Phosphoric Acid 10%                          | —                                 | —              | ✓                                     | —               | —   |             | x         | x    |
| Potassium Cyanide                            | ✓                                 | —              | ✓                                     | ■               | ■   |             | x         | x    |
| Potassium Dichromate                         | ✓                                 | —              | ✓                                     | —               | ■   |             | x         | x    |
| Potassium Sulphate                           | ✓                                 | —              | ✓                                     | —               | —   | x           | x         | x    |
| Potassium Hydroxide                          | ✓                                 | —              | ✓                                     | ✓               | ■   |             |           | x    |
| Propane                                      | ✓                                 | ✓              | ✓                                     | ✓               | ✓   | x           | x         |      |
| Prussic Acid                                 | ✓                                 | —              | ✓                                     | —               | —   |             |           | x    |
| Salt Solution                                | —                                 | ■              | ■                                     | ✓               | ■   |             |           | x    |
| Sea Water                                    | —                                 | ■              | ✓                                     | —               | —   | x           | x         | x    |

|   | Matériau                          |                |                          |                          |            | Seal Joint  |           |      |
|---|-----------------------------------|----------------|--------------------------|--------------------------|------------|-------------|-----------|------|
|   | Steel zinc plated<br>Acier zingué | Brass - Lation | Inox 316 Ti ou Similaire | Polyamide 11/12 PA 11/12 | Polyacétal | NBR Nitrile | FPM Viton | EPDM |
| Soap Solution   | —                                 | ✓              | ✓                        | ✓                        | ✓          | x           | x         | x    |
| Soda Solution   | —                                 | ■              | ✓                        | ✓                        | ■          | x           | x         | x    |
| Sodium Acetate  | —                                 | —              | ✓                        | ✓                        | ✓          | x           |           | x    |
| Sodium Bicarbonate  | —                                 | —              | ■                        | ✓                        | ✓          |             | x         | x    |
| Sodium Carbonate  | ✓                                 | —              | ✓                        | ✓                        | ✓          | x           | x         | x    |
| Sodium Chloride   | ✓                                 | —              | ✓                        | ✓                        | ✓          | x           | x         | x    |
| Sodium Cyanide  | ✓                                 | —              | ✓                        | —                        | ■          |             |           | x    |
| Sodium Sulphide   | ✓                                 | ■              | ✓                        | —                        | —          |             | x         | x    |
| Steam, up to 150°C  | ■                                 | ■              | ✓                        | —                        | —          |             |           | x    |
| Steam, up to 250°C  | ■                                 | ■              | ✓                        | —                        | —          |             |           | PTFE |
| Sulphide of barium  | ✓                                 | ■              | ✓                        | ✓                        | —          | x           | x         | x    |
| Sulphur Dioxide, Gas  | —                                 | ✓              | ✓                        | —                        | —          |             |           | x    |
| Sulphuret of Carbon   | —                                 | ✓              | ✓                        | —                        | ✓          |             |           | x    |
| Syntetic Resin Thinners (no nitrosolution)                    | ✓                                 | ✓              | ✓                        | ■                        | ■          |             |           | x    |
| Tar   | ✓                                 | ✓              | ✓                        | ✓                        | ✓          | x           | x         |      |
| Tetrachloride of Titanium                                     | ✓                                 | —              | ✓                        | —                        | —          |             |           | x    |
| Toluol, dry   | ■                                 | ✓              | ✓                        | ✓                        | ✓          |             |           | x    |
| Trichlorethylene  | ✓                                 | ■              | ✓                        | ✓                        | —          |             |           | x    |
| Turbine Fuel, BP: ATK 2494,<br>ESSO:MIL-F56/16, SHELL:ATF 650 | ✓                                 | ✓              | ✓                        | ✓                        | ■          | x           | x         |      |
| Turbine Oil, Esso:35  | ✓                                 | ✓              | ✓                        | ✓                        | ■          | x           | x         |      |
| Turb-oil 1 S (MILL 7808)                                      | ■                                 | ■              | ✓                        | ✓                        | ■          | x           | x         |      |
| Vacuum (Strengthened Valve Springs)                           | ✓                                 | ✓              | ✓                        | ✓                        | ✓          |             |           |      |
| Vegetable Oil   | ✓                                 | —              | ✓                        | ✓                        | ✓          | x           | x         | x    |
| Water, Distilled  | —                                 | —              | ✓                        | ✓                        | ✓          |             |           | x    |
| Water, Deionized  | —                                 | —              | ✓                        | —                        | —          | x           |           | x    |
| Water, Demineralised  | —                                 | —              | ✓                        | —                        | —          |             |           | x    |
| Water, up to 80°C   | ■                                 | ✓              | ✓                        | ■                        | ■          | x           | x         | x    |
| Water, over 80°C  | ■                                 | ✓              | ✓                        | ■                        | —          |             |           | x    |
| Water, Cooling  | ■                                 | ■              | ✓                        | ✓                        | ■          | x           | x         |      |
| Xylene  | ✓                                 | ✓              | ✓                        | ✓                        | ✓          |             |           | x    |



**QUICK RELEASE COUPLINGS FOR ALL KINDS OF FLUIDS  
COUPLEUR RAPIDE TOUS FLUIDES**

One Handed connection and disconnection  
Ei Connexion & déconnexion à une main

**SERIE 107** ISO 6150 - C

There are different types according to flow type. Différentes configurations d'obturation selon les débits voulus

|  |   |  |  |
|--|---|--|--|
| <p>Standard Serie / Série Standard</p> <p>Single Shut - off / Simple obturation</p> <p>(Coupler with valve, plug without valve)<br/>(Coupleur à clapet - embout sans clapet)</p> | <p>B Serie / Série B</p> <p>Double Shut - off / Double obturation</p> <p>(Coupler and plug with valve)<br/>(Coupleur et embout avec clapet)</p> | <p>F Serie / Série F</p> <p>Full Flow / Passage Libre</p> <p>(Coupler and plug without valve)<br/>(Coupleur et embout sans clapet)</p> | <p>S Serie / Série S</p> <p>Single Shut-off and Self venting<br/>Simple obturation sécurité</p> <p>(Coupler with valve, plug without valve)<br/>(Coupleur à clapet - embout sans clapet)</p> |
|--|---|--|--|

**B Type / Série B**

**B - Type ( Double Shut off Couplers )**

While letting in the coupler - valf a pin open the stop valve in fastener fitting and releases the flow. Please, order for mutual blocking of coupler - systems always the B execution, because a pin valve - fastener fitting can not be combined with an single shut off couplers ( no flow )

**Série B ( Double obturation )**

Quand connecte l'embout, son clapet s'ouvre grâce au pointeau du coupleur Dans tous les cas de la fonction double obturation, il faut impérativement utiliser un embout double obturation ( Version B )

**F Type / Série F**

**F - Type ( Full Flow Quick Release Couplers )**

Plug and socket without valve. Please, order for mutual blocking of coupler - systems always the F execution.

**Série F ( Coupleur et embout sans clapet )**

Toujours utiliser un coupleur passage libre et un embout passage libre

**S Type / Série S**

**S - Type ( Self Venting )**

TST couplers of the Serie are equipped normally with an additional safety - lock system and self venting.

1st push on button : venting 1st push on button causes venting of the plug and hose and the valve closes whilst the plug remains connected.  
2nd push on button : disconnection Because the hose has already vented, this 2nd push on the button allows disconnection of the plug from the socket without violent ejection and therefore without hose whip.

Les coupleurs série S sont équipés du système Safety Lock

Première pression sur le bouton :  
Décompression automatique du flexible  
Deuxième pression sur le bouton :  
Dégagement du flexible sans risque

|    |  |   |
|----|--|---|
| A  | Aluminium                                    | Aluminium   |
| B  | Brass  | Laiton  |
| C  | Steel  | Acier   |
| E  | EPDM seal                                    | Joint EPDM  |
| G  | Parallel gas thread (BSP)                    | Filetage cylindrique ( BSP)                       |
| H  | Case hardening                               | Durci   |
| J  | Silicone seal                                | Joint Silicone                                    |
| K  | Chrome plated                                | Finition chromée                                  |
| L  | CR seal (neoprene)                           | Joint Neoprène                                    |
| Ni | NBR seal (nitrile)                           | Joint Nitrile                                     |
| N  | Nickel plated                                | Finition nickelée                                 |
| P  | Teflone seal (PTFE)                          | Joint PTFE  |
| R  | Red Colour                                   | Filetage conique                                  |
| S  | Stainless steel AISI(303=S3,420=S4,.316L=S6) | Acier inoxydable AISI<br>(303=S3,420=S4,.316L=S6) |
| T  | Sealing coat on the thread                   | Filetage téfloné                                  |
| V  | Fluorocarbon (FFP)                           | Joint Viton (FPM)                                 |
| Y  | Yellow Colour                                | Taune   |
| Z  | Zinc Plated                                  | Finition zinguée                                  |
| W  | Perfluoroelastomer (FFPM)                    | Joint perfluoré (FFPM)                            |
| X  | Without plating                              | Sans traitement de surface                        |
| PS | Plastic                                      | Plastique   |
| VA | Vacuum                                       | Vide  |

**Attention:**

For optimal functioning, it is essential to use sockets and plugs of the same materials.

Pour un fonctionnement optimal, il est essentiel d'utiliser coupleur & embout de même construction

For optional orders please add the symbol of your option end of the order no.  
Pour commander des options, ajouter le symbole en fin de référence

- Seals - Joints:
- E - Ethylene - propylene
  - J - Fluorosilicone (FMQ)
  - P - Téflon (PTFE)
  - W - Perfluoré (FFKM)
  - L - Chloroprene (CR)
  - M - Nitrile (NBR)
  - V - Viton (FPM)



● **tst 107.03** ●

Body Size / Passage  
ø3mm / 7mm<sup>2</sup>



● **tst 107.06** ●

Body Size / Passage  
ø5.5mm / 23,5mm<sup>2</sup>

■ SERIE 107 ISO 6150 - C

Standard Serie / Série Standard:

argely stainless steel with 17 % chrome content.  
coupling back adaptor: anti-corrosion threaded steel Various  
ases, oils, hydrocarbons...

nox à 17% de chrome Pression maxi: 50 bars  
our utilisation air, gaz, hydrocarbures

S4 Serie / Série S4:

nox à 17% de chrome Pression maxi: 50 bars  
our utilisation air, eau, gaz, huiles...

S6 Serie / Série S6:

ISI 316L stainless steel with various corrosive gases, sea water,  
arge number of chemical products ina corrosive environment.

nox AISI 316L Pression maxi: 15 bars  
our utilisation produits chimiques,  
nvironnement corrosif

H4 Serie / Série H4:

nox à 17% de chrome et  
nox AISI 316L  
ression maxi: 300, 350 & 450 bars  
our utilisation haute pression  
au et gaz

H6 Serie / Série H6:

ISI 316L stainless steel Plug body and push button high  
esistance stainless steel. High pressure liquids and gases,  
ompressed air with demanding resistance to corrosion  
equirements or decontamination.

nox AISI 316L  
ression maxi: 300, 350 & 450 bars  
our utilisation haute presion  
au et gaz  
nvironnement corrosif

VA Serie / Série VA:

Internal components are AISI 316L stainless steel.  
Proposed for primary vacuum to 1.10-3 torr and for all  
applications demanding high integrity leak tightness.  
(Standard product is for Normal vacuumed purposes)

Préconiser pour le vide primaire 1.10-3  
Et pour toute utilisation en milieu étanche  
Le standard est utilisé pour un vide "normal"

| Socket<br>Coupleur | Unvalved plug<br>Embout sans clapet | Valved plug<br>Embout avec clapet |
|--------------------|-------------------------------------|-----------------------------------|
| standard           | standard                            | standard / S4                     |
| S4                 | standard                            | S4                                |
| S6                 | S6                                  | S6                                |
| S4 / H4            | standard                            | S4 / H4                           |
| S6 / H6            | S6 / H6                             | S6 / H6                           |
| S4 / VA            | standard                            | S4 / VA                           |



● **tst 107.08** ●  
Body Size / Passage  
ø8mm / 50mm<sup>2</sup>

● **tst 107.11** ●  
Body Size / Passage  
ø11mm / 95mm<sup>2</sup>

● **tst 107.19** ●  
Body Size / Passage  
ø19mm / 283.5mm<sup>2</sup>

SERIE 107 ISO 6150 - C ■

Safety keys Couplers / Clés de sécurité

**10 safety keys**

- to prevent all errors of connection between:
- different gases (risk of explosion)
- different fluids
- to provide as systematic reference mark on the circuits.

**10 clés de sécurité**

- Pour prévenir toute erreur de connexion
- Entre gaz (risque d'explosion)
- Entre fluides
- Repérage organisé des circuits

**References for Safety keys Couplers**

Please add KEY Code (K..) end of the order no of the products.  
(Ex: 107.03 EG 10 K00)

**Referencement des clés de sécurité**

Ajouter le code couleur à la fin de la référence des produits  
Ex: 107.03EG10K00

YELLOW/ JAUNE - 180°

CODE : K00



VIOLET / VIOLET - 165°

CODE : K15



RED/ ROUGE - 150°

CODE : K30



GREEN/ VERT - 135°

CODE : K45



BLUE/ BLEU - 120°

CODE : K60



BROWN/ MARRON - 105°

CODE : K75



BLACK/ NOIR - 90°

CODE : K90



RED-BLACK/ ROUGE-NOIR - 80°

CODE : K100



RED-GREEN/ ROUGE-VERT - 70°

CODE : K110



RED-YELLOW/ ROUGE-NOIR - 60°

CODE : K120

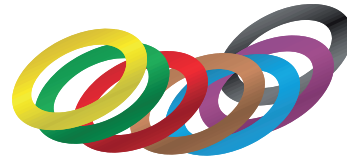


**SAFETY KEYS COUPLERS ARE NOT FOR SALE IN GERMANY**

■ Colour disc for built - in sockets Disque de couleur sur coupleur traversée de cloison

**Colour disc for built - in sockets**  
for immediate visual identification of circuits

**Disque de couleur sur coupleur traversée de cloison**  
Pour identification visuelle immédiate des circuits



|        | H00 | H15 | H30 | H45 | H60 | H75 | H90 |
|--------|-----|-----|-----|-----|-----|-----|-----|
| 107.08 | +   | -   | +   | +   | +   | -   | +   |

- Yellow / Jaune H00
- Violet / Violet H15
- Red / Rouge H30
- Green / Vert H45
- Blue / Bleu H60
- Brown / Marron H75
- Black / Noir H90

Safety keys Couplers / Options



**Protection against dirt ingress code PK**

In connected position the Chloroprene (CR) protector protects the functional components of the sockets against dirty and other external pollutants.

It must be combined with a YD push button.

Operating temperatures:  
-20° C to + 90° C  
(Not available for 107.03)

**Protection anti-poussiera Code PK**

Montée sur le coupleur, cette option en CR protège les pièces fonctionnelles contre les poussières ou autres agents extérieurs.

Doit être montée sur l'option YD  
T°: -20° C to + 90° C

(Non disponible pour 107.03)



**Raised push button code YD**

Recommended for frequent connection / disconnection or use when wearing safety gloves.

**Bouton dépassant code YD**

Recommandé pour de fréquentes Connexion - déconnexion ou utilisation avec des gants.



**Fixing device for socket dust cap code ZK**

Fixation du bouchon de protection  
Sur le coupleur  
Code ZK



**Safety Button Code ED**

1. Pull back safety slider.
2. Push button.

**Boutonde sécurité Code ED**




1. Tirer le bouton
2. Appuyer sur le bouton

**QUICK RELEASE COUPLINGS FOR ALL KINDS OF FLUIDS  
COUPLEUR RAPIDE TOUS FLUIDES**

One Handed connection and disconnection  
Connexion & déconnexion à une main

**SERIE 107** ISO 6150 - C

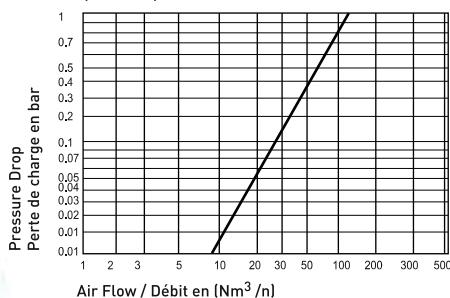
**Dust Caps - Bouchon de protection**

|  |  |               |
|--|--|---------------|
|   | Dust caps for couplings<br>Bouchon pour coupleur                 | 107.08 KG 00  |
|   | Dust caps for plugs<br>Bouchon pour embout                       | 107.08 KU 00  |
|  | Dust caps for plugs (PP)<br>Bouchon pour embout en Polypropylène | 107.08 UTK 00 |

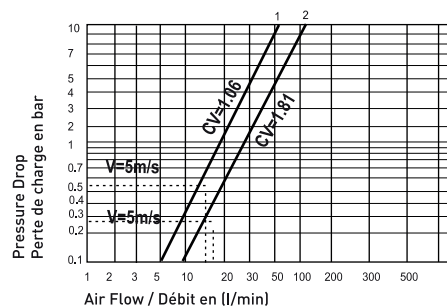
**SERIE 107.08**

| Couplings & Plugs - Coupleurs & Embouts    | Standard Serie | S4 Serie        | S6 Serie | H4 Serie | H6 Serie | VA Serie |
|--|----------------|-----------------|----------|----------|----------|----------|
| Nominal Ø (mm) - Diamètre nominal          | 8              | 8               | 8        | 8        | 8        | 8        |
| Cross section (mm²) - Section de passage   | 50             | 50              | 50       | 50       | 50       | 50       |
| Max. Working Press. -<br>Pression maximale | Bar            | 50              | 50       | 15       | 400      | 400      |
|  | PSI            | 725             | 725      | 217      | 5800     | 5800     |
| O-Ring / Joint (100°C)                     | NBR            | Option - Option |          |          |          |          |

Pneumatic charts flow rate/Pressure drop from the single shut-off system  
Courbe pneumatique débit/perte de charge  
Coupleur simple obturation



Hydraulic charts flow rate/Pressure drop  
Courbe hydraulique débit/perte de charge





**QUICK RELEASE COUPLINGS FOR ALL KINDS OF FLUIDS  
COUPLEUR RAPIDE TOUS FLUIDES**

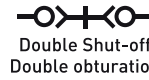
One Handed connection and disconnection  
Connexion & déconnexion à une main



**SERIE 107** ISO 6150 - C

(B - SERIE)

(F - SERIE)



**Couplings / Coupleurs**

|  | Ø<br>Nominal<br>Dia<br>NW | Connection<br>Raccord<br>(T) | Single Shut-off<br>Simple obturation | Double Shut-off<br>Double obturation | Full Flow<br>Passage libre | d<br>(mm) | L<br>(mm) |
|--|---------------------------|------------------------------|--------------------------------------|--------------------------------------|----------------------------|-----------|-----------|
|  |                           |                              | Order No/Référence                   | Order No/Référence                   | Order No/Référence         |           |           |
| <br>Couplings Female Thread<br>Coupleur taraudé<br><br>* Conical / Conique | 08                        | 1/4" BSP                     | 107.08 DG 13                         | 107.08 DGB 13                        | 107.08 DGF 13              | 32        | 65        |
|  |                           | 1/4" NPT                     | 107.08 NG 13                         | 107.08 NGB 13                        | 107.08 NGF 13              | 32        | 64        |
|  |                           | 3/8" BSP                     | 107.08 DG 17                         | 107.08 DGB 17                        | 107.08 DGF 17              | 32        | 65        |
|  |                           | 3/8" BSPT*                   | 107.08 QG 17                         | 107.08 QGB 17                        | 107.08 QGF 17              | 32        | 70        |
|  |                           | 3/8" NPT                     | 107.08 NG 17                         | 107.08 NGB 17                        | 107.08 NGF 17              | 32        | 64        |
|  |                           | 1/2" BSP                     | 107.08 DG 21                         | 107.08 DGB 21                        | 107.08 DGF 21              | 32        | 74        |
|  |                           | 1/2" NPT                     | 107.08 NG 21                         | 107.08 NGB 21                        | 107.08 NGF 21              | 32        | 74        |
|  |                           | 3/4" -16UN                   | 107.08 UG 19                         | 107.08 UGB 19                        | 107.08 UGF 19              | 32        | 74        |
| <br>Couplings Male Thread<br>Coupleur fileté cylindrique                   | 08                        | 1/4" BSP                     | 107.08 EG 13                         | 107.08 EGB 13                        | 107.08 EGF 13              |           | 61        |
|  |                           | 1/4" NPT                     | 107.08 TG 13                         | 107.08 TGB 13                        | 107.08 TGF 13              |           | 61        |
|  |                           | 3/8" BSP                     | 107.08 EG 17                         | 107.08 EGB 17                        | 107.08 EGF 17              |           | 61        |
|  |                           | 3/8" NPT                     | 107.08 TG 17                         | 107.08 TGB 17                        | 107.08 TGF 17              |           | 61        |
|  |                           | 1/2" BSP                     | 107.08 EG 21                         | 107.08 EGB 21                        | 107.08 EGF 21              |           | 61        |
| <br>Couplings for Rubber Hose<br>Coupleur cannelé                          | 08                        | Ø 8mm                        | 107.08 HG 08                         | 107.08 HGB 08                        | 107.08 HGF 08              |           | 58        |
|  |                           | Ø 10mm                       | 107.08 HG 10                         | 107.08 HGB 10                        | 107.08 HGF 10              |           | 58        |
|  |                           | Ø 13mm                       | 107.08 HG 13                         | 107.08 HGB 13                        | 107.08 HGF 13              |           | 58        |
|  |                           | Ø 16mm                       | 107.08 HG 16                         | 107.08 HGB 16                        | 107.08 HGF 16              |           | 58        |
| <br>Couplings for Plastic Tube<br>Coupleur pour tube plastique             | 08                        | Ø 8x10mm                     | 107.08 PG 08                         | 107.08 PGB 08                        | 107.08 PGF 08              |           | 88        |
|  |                           | Ø 10/12mm                    | 107.08 PG 10                         | 107.08 PGB 10                        | 107.08 PGF 10              |           | 88        |
| <br>Couplings for Copper Tube<br>Coupleur pour tube cuivre                 | 08                        | Ø 8x10mm                     | 107.08 CG 08                         | 107.08 CGB 08                        | 107.08 CGF 08              |           | 93        |
|  |                           | Ø 10x12mm                    | 107.08 CG 10                         | 107.08 CGB 10                        | 107.08 CGF 10              |           | 93        |
| <br>Couplings for Stainless Steel Tube<br>Coupleur pour tube inoxydable    | 08                        | Ø 10mm                       | 107.08 IG 10                         | 107.08 IGB 10                        | 107.08 IGF 10              |           | 74        |
|  |                           | Ø 12mm                       | 107.08 IG 12                         | 107.08 IGB 12                        | 107.08 IGF 12              |           | 74        |
|  |                           | Ø 3/8"                       | 107.08 IG 9.5                        | 107.08 IGB 9.5                       | 107.08 IGF 9.5             |           | 74        |
|  |                           | Ø 1/2"                       | 107.08 IG 12.7                       | 107.08 IGB 12.7                      | 107.08 IGF 12.7            |           | 74        |



**QUICK RELEASE COUPLINGS FOR ALL KINDS OF FLUIDS**  
**COUPLEUR RAPIDE TOUS FLUIDES**

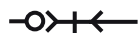
One Handed connection and disconnection  
Connexion & déconnexion à une main



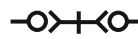
**SERIE 107** ISO 6150 - C

(B SERIE)

(F SERIE)



Single Shut-off  
Simple obturation



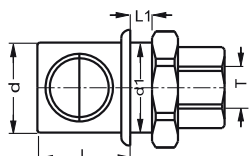
Double Shut-off  
Double obturation



Full Flow  
Passage libre

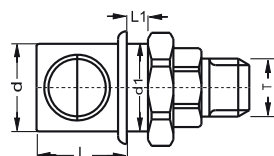
**Built - in Couplings**  
**Coupleurs traversée de cloison**

| Nominal Dia<br>NW | Connection<br>Raccord<br>(T) | Order No/Référence | Order No/Référence | Order No/Référence | d<br>(mm) | d1<br>(mm) | L<br>(mm) | L1<br>(mm) |
|-------------------|------------------------------|--------------------|--------------------|--------------------|-----------|------------|-----------|------------|
|                   |                              |                    |                    |                    |           |            |           |            |



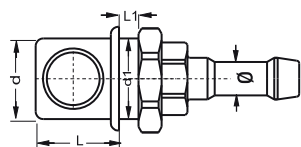
Couplings Female Thread  
Coupleur taraudé  
traversée de cloison

|    |           |               |                |                |    |    |    |    |
|----|-----------|---------------|----------------|----------------|----|----|----|----|
| 08 | 1/4" BSP  | 1071.08 DG 13 | 1071.08 DGB 13 | 1071.08 DGF 13 | 32 | 32 | 31 | 11 |
|    | 1/4" NPT  | 1071.08 NG 13 | 1071.08 NGB 13 | 1071.08 NGF 13 | 32 | 32 | 31 | 11 |
|    | 3/8" BSP  | 1071.08 DG 17 | 1071.08 DGB 17 | 1071.08 DGF 17 | 32 | 32 | 31 | 11 |
|    | 3/8" NPT  | 1071.08 NG 17 | 1071.08 NGB 17 | 1071.08 NGF 17 | 32 | 32 | 31 | 11 |
|    | 1/2" BSP  | 1071.08 DG 21 | 1071.08 DGB 21 | 1071.08 DGF 21 | 32 | 32 | 31 | 11 |
|    | 1/2" NPT  | 1071.08 NG 21 | 1071.08 NGB 21 | 1071.08 NGF 21 | 32 | 32 | 31 | 11 |
|    | 3/4"-16UN | 1071.08 UG 19 | 1071.08 UGB 19 | 1071.08 UGF 19 | 32 | 32 | 31 | 11 |



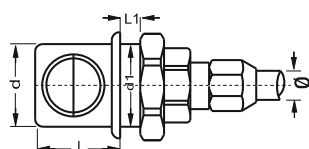
Couplings Male Thread  
Coupleur fileté cylindrique  
traversée de cloison

|    |          |               |                |                |    |    |    |      |
|----|----------|---------------|----------------|----------------|----|----|----|------|
| 08 | 1/4" BSP | 1071.08 EG 13 | 1071.08 EGB 13 | 1071.08 EGF 13 | 32 | 32 | 31 | 11.5 |
|    | 1/4" NPT | 1071.08 TG 13 | 1071.08 TGB 13 | 1071.08 TGF 13 | 32 | 32 | 31 | 11.5 |
|    | 3/8" BSP | 1071.08 EG 17 | 1071.08 EGB 17 | 1071.08 EGF 17 | 32 | 32 | 31 | 11.5 |
|    | 3/8" NPT | 1071.08 TG 17 | 1071.08 TGB 17 | 1071.08 TGF 17 | 32 | 32 | 31 | 11.5 |
|    | 1/2" BSP | 1071.08 EG 21 | 1071.08 EGB 21 | 1071.08 EGF 21 | 32 | 32 | 31 | 11.5 |
|    | 1/2" NPT | 1071.08 TG 21 | 1071.08 TGB 21 | 1071.08 TGF 21 | 32 | 32 | 31 | 11.5 |



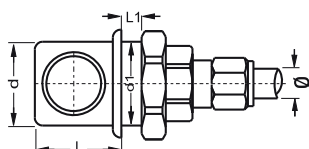
Couplings for Rubber Hose  
Coupleur cannelé traversée de cloison

|    |        |               |                |                |    |    |    |      |
|----|--------|---------------|----------------|----------------|----|----|----|------|
| 08 | Ø 8mm  | 1071.08 HG 08 | 1071.08 HGB 08 | 1071.08 HGF 08 | 32 | 32 | 31 | 11.5 |
|    | Ø 10mm | 1071.08 HG 10 | 1071.08 HGB 10 | 1071.08 HGF 10 | 32 | 32 | 31 | 11.5 |
|    | Ø 13mm | 1071.08 HG 13 | 1071.08 HGB 13 | 1071.08 HGF 13 | 32 | 32 | 31 | 11.5 |
|    | Ø 16mm | 1071.08 HG 16 | 1071.08 HGB 16 | 1071.08 HGF 16 | 32 | 32 | 31 | 11.5 |



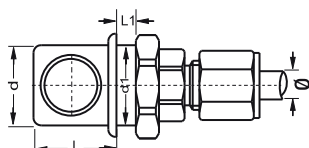
Couplings for Plastic Tube  
Coupleur pour tube plastique  
traversée de cloison

|    |           |               |                |                |    |    |    |      |
|----|-----------|---------------|----------------|----------------|----|----|----|------|
| 08 | Ø 8x10mm  | 1071.08 PG 08 | 1071.08 PGB 08 | 1071.08 PGF 08 | 32 | 32 | 31 | 11.5 |
|    | Ø 10x12mm | 1071.08 PG 10 | 1071.08 PGB 10 | 1071.08 PGF 10 | 32 | 32 | 31 | 11.5 |



Couplings for Copper Tube  
Coupleur pour tube cuivre  
traversée de cloison

|    |           |               |                |                |    |    |    |      |
|----|-----------|---------------|----------------|----------------|----|----|----|------|
| 08 | Ø 8x10mm  | 1071.08 CG 08 | 1071.08 CGB 08 | 1071.08 CGF 08 | 32 | 32 | 31 | 11.5 |
|    | Ø 10x12mm | 1071.08 CG 10 | 1071.08 CGB 10 | 1071.08 CGF 10 | 32 | 32 | 31 | 11.5 |



Couplings for Stainless Steel Tube  
Coupleur pour tube inoxydable  
traversée de cloison

|    |        |                 |                  |                  |    |    |    |      |
|----|--------|-----------------|------------------|------------------|----|----|----|------|
| 08 | Ø 10mm | 1071.08 IG 10   | 1071.08 IGB 10   | 1071.08 IGF 10   | 32 | 32 | 31 | 11.5 |
|    | Ø 12mm | 1071.08 IG 12   | 1071.08 IGB 12   | 1071.08 IGF 12   | 32 | 32 | 31 | 11.5 |
|    | Ø 3/8" | 1071.08 IG 9.5  | 1071.08 IGB 9.5  | 1071.08 IGF 9.5  | 32 | 32 | 31 | 11.5 |
|    | Ø 1/2" | 1071.08 IG 12.7 | 1071.08 IGB 12.7 | 1071.08 IGF 12.7 | 32 | 32 | 31 | 11.5 |

**QUICK RELEASE COUPLINGS FOR ALL KINDS OF FLUIDS  
COUPLEUR RAPIDE TOUS FLUIDES**

One Handed connection and disconnection  
Connexion & déconnexion à une main




**SERIE 107** ISO 6150 - C ■

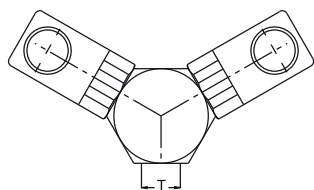
**Built - in Couplings  
Coupleurs répartiteur**

Ø  
Nominal  
Dia  
NW

Connection / Raccord  
(T/Ø)

  
Single Shut-off / Simple obturation  
Order No/Référence

  
Full Flow / Passage libre  
Order No/Référence



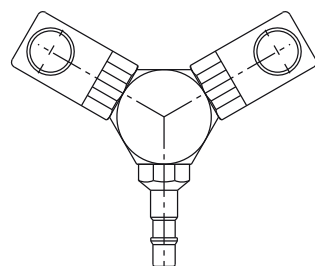
Fixed Y Couplings  
Coupleur en Y fixe

08

1/4" BSP  
3/8" BSP  
1/2" BSP

107.08 2GS 13  
107.08 2GS 17  
107.08 2GS 21

107.08 2GSF 13  
107.08 2GSF 17  
107.08 2GSF 21

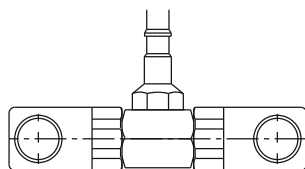


Mobile Y Couplings  
Coupleur en Y mobile

08

107.08 2GU 00

107.08 2GUF 00

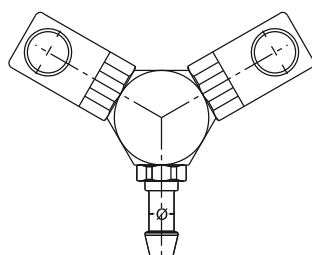


Mobile T Couplings  
Coupleur en Té mobile

08

107.08 2GU 01

107.08 2GUF 01



Rubber Hose Y Couplings  
Coupleur en Y mobile

08

Ø 13mm  
Ø 16mm

107.08 2GH 13  
107.08 2GH 16

107.08 2GHF 13  
107.08 2GHF 16

QUICK RELEASE COUPLINGS FOR ALL KINDS OF FLUIDS  
COUPLEUR RAPIDE TOUS FLUIDES

One Handed connection and disconnection  
Connexion & déconnexion à une main

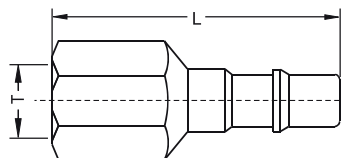


SERIE 107 ISO 6150 - C ■



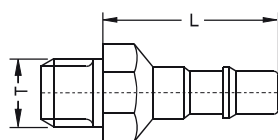
Single Shut-off / Passage Libre  
Order No/Référence

**Unvalved Plugs**  
Embout sans clapet



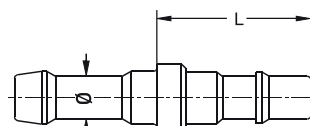
Plugs Female Thread  
Embout taraudé

\* Conical / Conique

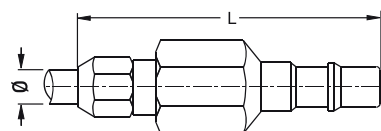


Plugs Male Thread  
Embout fileté cylindrique

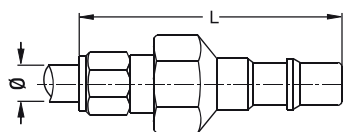
\* Conical / Conique



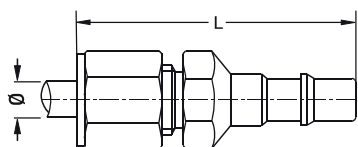
Plugs for Rubber Hoses  
Embout cannelé



Plugs for Plastic Tube  
Embout pour tube plastique



Plugs for Copper Tube  
Embout pour tube cuivre



Plugs for Stainless Steel Tube  
Embout pour tube inoxydable

| Ø<br>Nominal<br>Dia<br>NW | Connection<br>Raccord<br>(T / Ø) | Single Shut-off / Passage Libre<br>Order No/Référence | L<br>(mm)    |    |
|---------------------------|----------------------------------|---|--------------|----|
| 08                        | 1/8" BSP                         | 107.08 DU 10  | 50           |    |
|                           | 1/4" BSP                         | 107.08 DU 13  | 55           |    |
|                           | 1/4" NPT                         | 107.08 NU 13  | 55           |    |
|                           | 3/8" BSP                         | 107.08 DU 17  | 55           |    |
|                           | 3/8" BSPT*                       | 107.08 QU 17  | 55           |    |
|                           | 3/8" NPT                         | 107.08 NU 17  | 55           |    |
|                           | 1/2" BSP                         | 107.08 DU 21  | 59           |    |
|                           | 1/2" NPT                         | 107.08 NU 21  | 59           |    |
|                           | 08                               | 1/8" BSP  | 107.08 EU 10 | 45 |
|                           |                                  | 1/8" BSPT*  | 107.08 RU 10 | 43 |
| 1/4" BSP                  |                                  | 107.08 EU 13  | 44           |    |
| 1/4" BSPT*                |                                  | 107.08 RU 13  | 43           |    |
| 1/4" NPT                  |                                  | 107.08 TU 13  | 43           |    |
| 3/8" BSP                  |                                  | 107.08 EU 17  | 44           |    |
| 3/8" BSPT*                |                                  | 107.08 RU 17  | 43           |    |
| 3/8" NPT                  |                                  | 107.08 TU 17  | 47           |    |
| 1/2" BSP                  |                                  | 107.08 EU 21  | 48           |    |
| 1/2" BSPT*                |                                  | 107.08 RU 21  | 47           |    |
| 1/2" NPT                  | 107.08 TU 21                     | 47  |              |    |
| 08                        | Ø 6mm                            | 107.08 HU 06  | 38           |    |
|                           | Ø 8mm                            | 107.08 HU 08  | 38           |    |
|                           | Ø 10mm                           | 107.08 HU 10  | 38           |    |
|                           | Ø 13mm                           | 107.08 HU 13  | 42           |    |
|                           | Ø 16mm                           | 107.08 HU 16  | 42           |    |
| 08                        | Ø 8/10 mm                        | 107.08 PU 08  | 87           |    |
|                           | Ø 10/12 mm                       | 107.08 PU 10  | 87           |    |
| 08                        | Ø 8/10 mm                        | 107.08 CU 08  | 82           |    |
|                           | Ø 10/12 mm                       | 107.08 CU 10  | 82           |    |
| 08                        | Ø 10 mm                          | 107.08 IU 10  | 82           |    |
|                           | Ø 12 mm                          | 107.08 IU 12  | 82           |    |
|                           | Ø 3/8"                           | 107.08 IU 9.5   | 82           |    |
|                           | Ø 1/2"                           | 107.08 IU 12.7  | 82           |    |



SERIE 107B ISO 6150 - C ■

(B-SERIE)



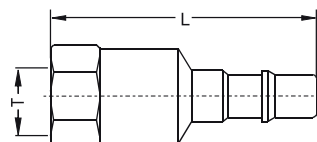
Order No/Référence

L  
(mm)

**Shut-off Plugs**  
Embout à clapet

Ø  
Nominal  
Dia  
NW

Connection  
Raccord  
(T / Ø)

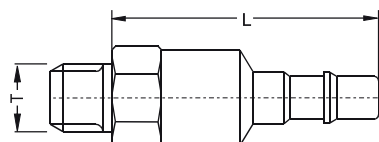


Plugs With Female Thread  
Embout taraudé à clapet

\* Conical / Conique

08

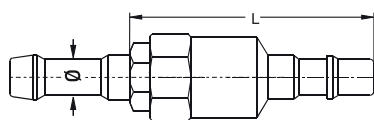
1/4" BSP 107.08 DUB 13 78  
1/4" NPT 107.08 NUB 13 78  
3/8" BSP 107.08 DUB 17 80  
3/8 BSPT\* 107.08 QUB 17 80  
3/8" NPT 107.08 NUB 17 79  
1/2" BSP 107.08 DUB 21 85  
1/2" NPT 107.08 NUB 21 85  
3/4" UN-16 107.08 UUB 19 85



Plugs With Male Thread  
Embout fileté cylindrique à clapet

08

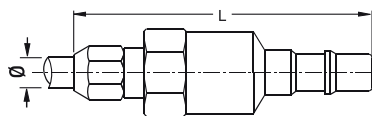
1/4" BSP 107.08 EUB 13 72  
1/4" NPT 107.08 TUB 13 72  
3/8" BSP 107.08 EUB 17 72  
3/8" NPT 107.08 TUB 17 72  
1/2" BSP 107.08 EUB 21 72  
1/2" NPT 107.08 TUB 21 72



Plugs for Rubber Hoses  
Embout cannelé à clapet

08

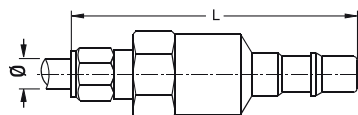
Ø 6mm 107.08 HUB 06 92  
Ø 8mm 107.08 HUB 08 92  
Ø 10mm 107.08 HUB 10 92  
Ø 13mm 107.08 HUB 13 92  
Ø 16mm 107.08 HUB 16 92



Plugs for Plastic Tube  
Embout fileté plastique à clapet

08

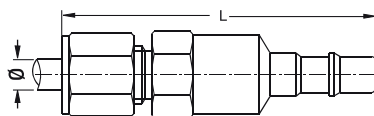
Ø 8/10 mm 107.08 PUB 08 103  
Ø 10/12 mm 107.08 PUB 10 103



Plugs For copper Tube  
Embout pour tube à clapet

08

Ø 8/10 mm 107.08 CUB 08 108  
Ø 10/12 mm 107.08 CUB 10 108



Plugs For Stainless Steeltube  
Embout pour tube acier inoxydable à clapet

08

Ø 10 mm 107.08 IUB 10 108  
Ø 12 mm 107.08 IUB 12 108  
Ø 3/8" 107.08 IUB 9.5 108  
Ø 1/2" 107.08 IUB 12.7 108

**SELF VENTING TYPE**  
**SÉCURITÉ ANTI COUP DE FOUET**

One Handed connection and disconnection  
Connexion & déconnexion à une main

**SERIE 107S** ISO 6150 - C

**SELF VENTING TYPE / SICHERHEITS-SCHNELLKUPPLUNG**

TST 107S Quick release safety couplings for compressed air consisting of an 107S socket and 107 plug...

- Construction:  
Single shut - off system. Plug with an open passage.  
The functional parts have a great resistance to wear and tear, shocks and corrosion:
- Stainless steel coupling bodies
  - plug (13% chromium, content hardened and precision ground),
  - large all - in - once steel push button (13% hardened chromium content),
  - Nitrile seal (NBR)

La serie TST 107S - coupleur de securite anti coup de fouet est a associer avec un embout 107 passage libre

- Construction:  
Coupleur simple obturation - Embout passage libre  
Corps de coupleur : Acier inox à 17% de chrome  
Embout : Acier inox à 13% de chrome trempé, rectifié  
Bouton : Acier inox à 13% de chrome trempé  
Joints en Nitrile

**TWO STAGE PUSH-BUTTON COUPLERS**

- 1 st impulse on the push button: decompression
  - 2 st impulse on the push button: releasing plug
- The function of the safety prevents the possibility of dangerous hose-whip.

**COUPLEUR 2 PRESSIONS**

- Première pression : Décompression du flexible
- Deuxième pression : Désaccouplement de l'embout

La fonction sécurité prévient toute possibilité de coup de fouet



● **tst 107S.06** ●  
Body Size / Passage  
ø5.5mm / 23,5mm<sup>2</sup>



● **tst 107S.08** ●  
Body Size / Passage  
ø8mm / 50mm<sup>2</sup>

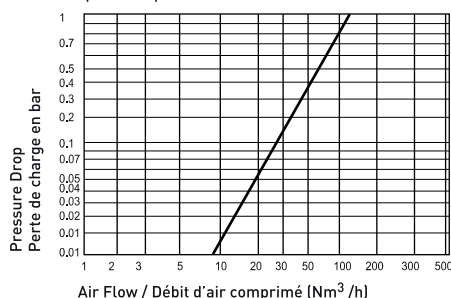


● **tst 107S.11** ●  
Body Size / Passage  
ø11mm / 95mm<sup>2</sup>

**SERIE 107S.08**



Pneumatic charts flow rate/Pressure drop from the single shut-off system  
Courbe pneumatique débit/perte de charge  
Coupleur simple obturation

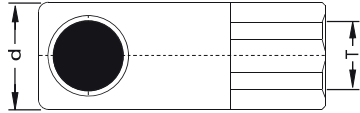
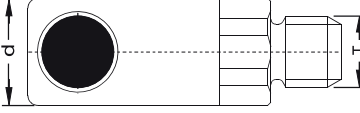
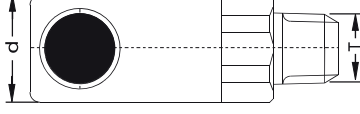
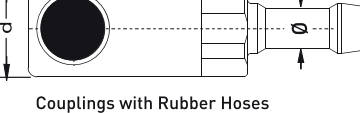
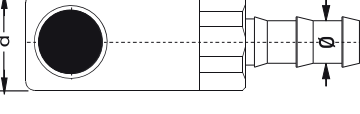
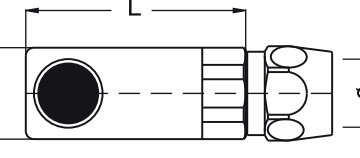


**Couplings & Plugs - Coupleur et embout**

|   | Standard Serie     |     |
|---|--------------------|-----|
| Nominal Ø (mm) - Ø Nominal                            | 8 mm               |     |
| Cross section (mm <sup>2</sup> ) - Section de passage | 50 mm <sup>2</sup> |     |
| Max. Working Press. - Pression maximale               | Bar                | 16  |
|   | PSI                | 232 |
| O-Ring / Joint (100°C)                                | NBR                |     |



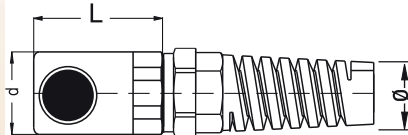
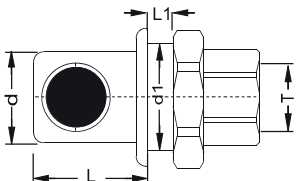
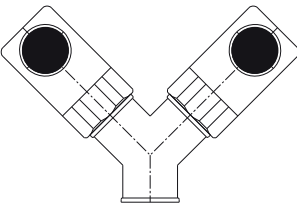
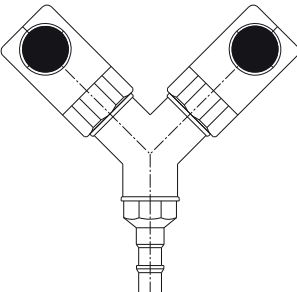
■ SERIE 107S ISO 6150 - C

| Couplings / Coupleurs   | Ø<br>Nominal<br>Dia<br>NW | Connection<br>Raccord<br>(T / Ø) | Single Shut-off / Passage Libre |    | d<br>(mm) | L<br>(mm) |
|---|---------------------------|----------------------------------|---------------------------------|----|-----------|-----------|
|   |                           |                                  | Order No/Référence              |    |           |           |
| <br>Couplings Female Thread<br>Coupleur taraudé                                 | 08                        | 1/4" BSP                         | 107.08 DGS 13                   | 27 |           |           |
|   |                           | 1/4" NPT                         | 107.08 NGS 13                   | 27 |           |           |
|   |                           | 3/8" BSP                         | 107.08 DGS 17                   | 27 |           |           |
|   |                           | 3/8" NPT                         | 107.08 NGS 17                   | 27 |           |           |
|   |                           | 1/2" BSP                         | 107.08 DGS 21                   | 27 |           |           |
|   |                           | 1/2" NPT                         | 107.08 NGS 21                   | 27 |           |           |
| <br>Couplings Male Thread<br>Coupleur fileté cylindrique                        | 08                        | 1/4" BSP                         | 107.08 EGS 13                   | 27 |           |           |
|   |                           | 3/8" BSP                         | 107.08 EGS 17                   | 27 |           |           |
|   |                           | 1/2" BSP                         | 107.08 EGS 21                   | 27 |           |           |
| <br>Couplings with Male Conical Thread<br>Coupleur fileté conique             | 08                        | 1/4" BSP                         | 107.08 RGS 13                   | 27 |           |           |
|   |                           | 1/4" NPT                         | 107.08 TGS 13                   | 27 |           |           |
|   |                           | 3/8" BSP                         | 107.08 RGS 17                   | 27 |           |           |
|   |                           | 3/8" NPT                         | 107.08 TGS 17                   | 27 |           |           |
|   |                           | 1/2" BSP                         | 107.08 RGS 21                   | 27 |           |           |
|   |                           | 1/2" NPT                         | 107.08 TGS 21                   | 27 |           |           |
| <br>Couplings with Rubber Hoses<br>Coupleur cannelé                           | 08                        | Ø 8mm                            | 107.08 HGS 08                   | 27 |           |           |
|   |                           | Ø 10mm                           | 107.08 HGS 10                   | 27 |           |           |
|   |                           | Ø 13mm                           | 107.08 HGS 13                   | 27 |           |           |
|   |                           | Ø 16mm                           | 107.08 HGS 16                   | 27 |           |           |
| <br>Couplings with Push-Lock Hoses<br>Coupleur cannelé pour tube auto serrant | 08                        | Ø 10mm                           | 107.08 FGS 10                   | 27 |           |           |
|   |                           | Ø 13mm                           | 107.08 FGS 13                   | 27 |           |           |
|   |                           | Ø 16mm                           | 107.08 FGS 16                   | 27 |           |           |
| <br>Coupling for Plastic Tube<br>Coupleur pour tube plastique                 | 08                        | Ø 6.5x10mm                       | 107.08 PGS 06                   | 27 | 60        |           |
|   |                           | Ø 8x12mm                         | 107.08 PGS 08                   | 27 | 60        |           |
|   |                           | Ø 9x13mm                         | 107.08 PGS 09                   | 27 | 60        |           |
|   |                           | Ø 11x16mm                        | 107.08 PGS 11                   | 27 | 60        |           |
|   |                           | Ø 13x18mm                        | 107.08 PGS 13                   | 27 | 60        |           |



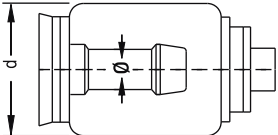
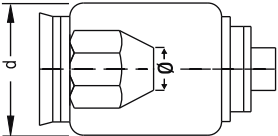
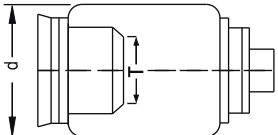
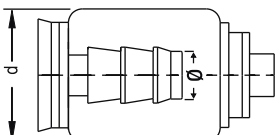


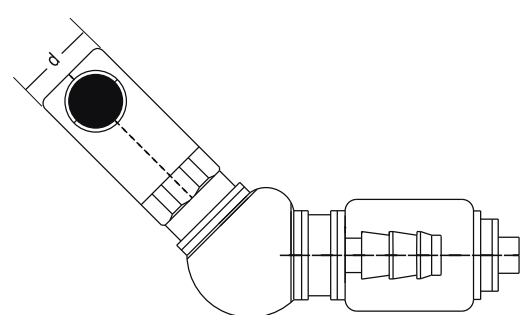
**SERIE 107S** ISO 6150 - C

| Couplings / Coupleurs  | Ø<br>Nominal<br>Dia<br>NW | Connection<br>Raccord<br>(T / Ø) | Single Shut-off / Passage Libre |  | d<br>(mm) | d1<br>(mm) | L<br>(mm) | L1<br>(mm) |
|--|---------------------------|----------------------------------|---------------------------------|--|-----------|------------|-----------|------------|
|  |                           |                                  | Order No/Référence              |  |           |            |           |            |
|  <p>Coupling for Plastic Tube With Guard<br/>Coupleur pour tube plastique avec spire de protection polyamide</p> | 08                        | Ø 6.5x10mm                       | 107.08 YGS 06                   |  | 27        |            | 60        |            |
|  |                           | Ø 8x12mm                         | 107.08 YGS 08                   |  | 27        |            | 60        |            |
|  |                           | Ø 9x13mm                         | 107.08 YGS 09                   |  | 27        |            | 60        |            |
|  |                           | Ø 11x16mm                        | 107.08 YGS 11                   |  | 27        |            | 60        |            |
|  |                           | Ø 13x18mm                        | 107.08 YGS 13                   |  | 27        |            | 60        |            |
|  |                           |                                  |                                 |  |           |            |           |            |
| <p>Built - in couplings</p>  <p>Couplings Female Thread<br/>Coupleur taraudé Traversée de cloison</p>          | 08                        | 1/4" BSP                         | 1071.08 DGS 13                  |  | 27        | 33         | 31        | 11.5       |
|  |                           | 1/4" NPT                         | 1071.08 NGS 13                  |  | 27        | 33         | 31        | 11.5       |
|  |                           | 3/8" BSP                         | 1071.08 DGS 17                  |  | 27        | 33         | 31        | 11.5       |
|  |                           | 3/8" NPT                         | 1071.08 NGS 17                  |  | 27        | 33         | 31        | 11.5       |
|  |                           | 1/2" BSP                         | 1071.08 DGS 21                  |  | 27        | 33         | 31        | 11.5       |
|  |                           | 1/2" NPT                         | 1071.08 NGS 21                  |  | 27        | 33         | 31        | 11.5       |
|  <p>Fixed Y Couplings<br/>Coupleur en Y fixe</p>  | 08                        | 3/8" BSP                         | 107.08 2GSS 17                  |  |           |            |           |            |
|  |                           | 1/2" BSP                         | 107.08 2GSS 21                  |  |           |            |           |            |
|  <p>Mobile Y Couplings<br/>Coupleur en Y mobile</p>   | 08                        |                                  | 107.08 2GUS 00                  |  |           |            |           |            |



**SERIE 107S** ISO 6150 - C Couplings with 360° Swivel Connection for compressed air  
Raccord Rotule à 360° pour air comprimé

| Couplings / Coupleurs  | Ø<br>Nominal<br>Dia<br>NW | Connection<br>Raccord<br>(T / Ø) | Single Shut-off / Passage Libre |           |
|--|---------------------------|----------------------------------|---------------------------------|-----------|
|  |                           |                                  | Order No/Référence              | d<br>(mm) |
| <br>Standard Hose Tail connection<br>Rotule cannelée                  | 08                        | Ø 8mm                            | 107.08 HRS 08                   | 27        |
|  |                           | Ø 10mm                           | 107.08 HRS 10                   | 27        |
|  |                           | Ø 13mm                           | 107.08 HRS 13                   | 27        |
|  |                           | Ø 16mm                           | 107.08 HRS 16                   | 27        |
| <br>Plastic Hose Connection<br>Rotule pour tube plastique             | 08                        | Ø 8x12mm                         | 107.08 PRS 08                   | 27        |
|  |                           | Ø 9x 13mm                        | 107.08 PRS 09                   | 27        |
|  |                           | Ø 11x 16mm                       | 107.08 PRS 11                   | 27        |
| <br>Female Threaded Connection<br>Rotule taraudée                   | 08                        | 1/4" BSP                         | 107.08 DRS 13                   | 27        |
|  |                           | 3/8" BSP                         | 107.08 DRS 17                   | 27        |
|  |                           | 1/4" NPT                         | 107.08 NRS 13                   | 27        |
|  |                           | 3/8" NPT                         | 107.08 NRS 17                   | 27        |
| <br>Push-Lock Hose Tail Connection<br>Rotule pour tube auto serrant | 08                        | Ø 3/8"                           | 107.08 FRS 10                   | 27        |
|  |                           | Ø 1/2"                           | 107.08 FRS 13                   | 27        |



SELF VENTING TYPE POLYAMIDE BODY  
SÉCURITÉ ANTI COUP DE FOUET - CORPS EN POLYAMIDE

One Handed connection and disconnection  
Connexion & déconnexion à une main

SERIE 107SP ISO 6150 - C

SELF VENTING TYPE / SECURITÉ ANTI COUP DE FOUET

TST 107SP Quick release safety couplings for compressed air consisting of an 107SP socket and 107 plug...

Construction:

Single shut - off system. Plug with an open passage.  
The functional parts have a great resistance to wear and tear, shocks and corrosion:

- plastic coupling bodies
- plug (13% chromium, content hardened and precision ground),
- large all - in - once steel push button (13% hardened chromium content),
- Nitrile seal (NBR)



TWO STAGE PUSH-BUTTON COUPLERS

- 1 st impulse on the push button: decompression
- 2 st impulse on the push button: releasing plug

The function of the safety prevents the possibility of dangerous hose-whip.

COUPLEUR 2 PRESSIONS

- 1- Première pression: Décompression du flexible
- 2- Deuxième pression: Désaccouplement de l'embout



• tst 107S.06 •

Body Size / Passage  
ø5.5mm / 23,5mm<sup>2</sup>

• tst 107S.08 •

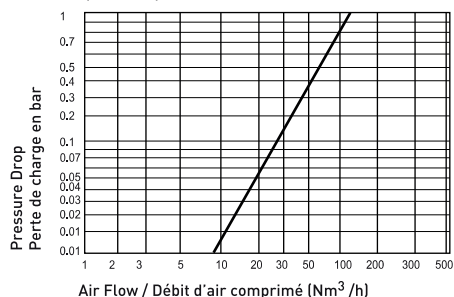
Body Size / Passage  
ø8mm / 50mm<sup>2</sup>

■ SERIE 107SP ISO 6150 - C

One Handed connection and disconnection  
Connexion & déconnexion à une main

SERIE 107SP.08 ■

Pneumatic charts flow rate/Pressure drop from the single shut-off system  
Courbe pneumatique débit/perte de charge  
Coupleur simple obturation



**Couplings & Plugs - Coupleurs & Embouts**

Standard Serie

Nominal Ø (mm) - Nominal

8 mm

Cross section (mm²) - Section de passage

50 mm²

Max. Working Press. -  
Pression maximale

Bar

16

PSI

232

O-Ring / Joint (100°C)

NBR



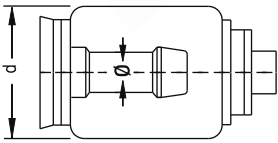
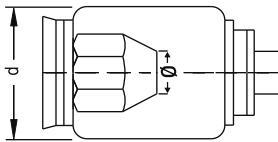
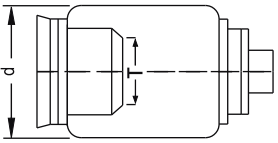
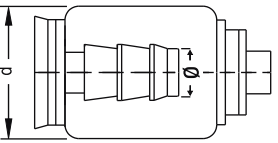


**SERIE 107SP** ISO 6150 - C

| Couplings / Coupleurs  | Ø<br>Nominal<br>Dia<br>NW | Connection<br>Raccord<br>(T / Ø) | <br>Single Shut-off / Passage Libre |  | d<br>(mm) | L<br>(mm) |
|--|---------------------------|----------------------------------|-------------------------------------|--|-----------|-----------|
|  |                           |                                  | Order No/Référence                  |  |           |           |
| <br>Couplings Female Thread<br>Coupleur taraudé  | 08                        | 1/4" BSP                         | 107P.08 DGS 13                      |  | 31        | 67        |
|  |                           | 3/8" BSP                         | 107P.08 DGS 17                      |  | 31        | 68        |
|  |                           | 1/2" BSP                         | 107P.08 DGS 21                      |  | 31        | 77        |
| <br>Couplings Male Thread<br>Coupleur fileté cylindrique   | 08                        | 1/4" BSP                         | 107P.08 EGS 13                      |  | 31        | 74        |
|  |                           | 3/8" BSP                         | 107P.08 EGS 17                      |  | 31        | 75        |
|  |                           | 1/2" BSP                         | 107P.08 EGS 21                      |  | 31        | 77        |
| <br>Couplings for Rubber Hoses<br>Coupleur cannelé   | 08                        | Ø 8mm                            | 107P.08 HGS 08                      |  | 31        | 60        |
|  |                           | Ø 10mm                           | 107P.08 HGS 10                      |  | 31        | 60        |
|  |                           | Ø 13mm                           | 107P.08 HGS 13                      |  | 31        | 60        |
|  |                           | Ø 16mm                           | 107P.08 HGS 16                      |  | 31        | 60        |
| <br>Coupling for Plastic Tube<br>Coupleur pour tube plastique  | 08                        | Ø 6.5x10mm                       | 107P.08 PGS 06                      |  | 31        | 60        |
|  |                           | Ø 8x12mm                         | 107P.08 PGS 08                      |  | 31        | 60        |
|  |                           | Ø 9x13mm                         | 107P.08 PGS 09                      |  | 31        | 60        |
|  |                           | Ø 11x16mm                        | 107P.08 PGS 11                      |  | 31        | 60        |
|  |                           | Ø 13x18mm                        | 107P.08 PGS 13                      |  | 31        | 60        |
| <br>Coupling for Plastic Tube With Guard<br>Coupleur pour tube plastique avec spire<br>de protection polyamide | 08                        | Ø 6.5x10mm                       | 107P.08 YGS 06                      |  | 31        | 60        |
|  |                           | Ø 8x12mm                         | 107P.08 YGS 08                      |  | 31        | 60        |
|  |                           | Ø 9x13mm                         | 107P.08 YGS 09                      |  | 31        | 60        |
|  |                           | Ø 11x16mm                        | 107P.08 YGS 11                      |  | 31        | 60        |
|  |                           | Ø 13x18mm                        | 107P.08 YGS 13                      |  | 31        | 60        |



■ SERIE 107SP ISO 6150 - C

| Couplings / Coupleurs  | Ø<br>Nominal<br>Dia<br>NW | Connection<br>Raccord<br>(T / Ø) | Single Shut-off / Passage Libre |           |
|--|---------------------------|----------------------------------|---------------------------------|-----------|
|  |                           |                                  | Order No/Référence              | d<br>(mm) |
| <br>Standard Hose Tail connection<br>Rotule cannelée                  | 08                        | Ø 8mm                            | 107P.08 HRS 08                  | 31        |
|  |                           | Ø 10mm                           | 107P.08 HRS 10                  | 31        |
|  |                           | Ø 13mm                           | 107P.08 HRS 13                  | 31        |
|  |                           | Ø 16mm                           | 107P.08 HRS 16                  | 31        |
|  |                           |                                  |                                 |           |
| <br>Plastic Hose Connection<br>Rotule pour tube plastique             | 08                        | Ø 8x12 mm                        | 107P.08 PRS 08                  | 31        |
|  |                           | Ø 9x 13 mm                       | 107P.08 PRS 09                  | 31        |
|  |                           | Ø 11x 16 mm                      | 107P.08 PRS 11                  | 31        |
| <br>Female Threaded Connection<br>Rotule taraudee                   | 08                        | 1/4" BSP                         | 107P.08 DRS 13                  | 31        |
|  |                           | 3/8" BSP                         | 107P.08 DRS 17                  | 31        |
|  |                           | 1/4" NPT                         | 107P.08 NRS 13                  | 31        |
|  |                           | 3/8" NPT                         | 107P.08 NRS 17                  | 31        |
| <br>Push-Lock Hose Tail Connection<br>Rotule pour tube auto serrant | 08                        | Ø 3/8"                           | 107P.08 FRS 10                  | 31        |
|  |                           | Ø 1/2"                           | 107P.08 FRS 13                  | 31        |



# DBI

## GROUPE

---



QUICK COUPLINGS  
COUPLEUR RAPIDE

107

ISO 6150 - C

