

DBI

GROUPE

QUICK COUPLINGS
COUPLEUR RAPIDE

107.06

ISO 6150 - C



JOINT ET MATERIAUX	01-02
CARACTERISTIQUE SERIE 107	03-04
OPTIONS	05-06
SERIE 107.03	07
COUPLEURS	08
COUPLEURS TRAVERSÉE DE CLOISON	09
COUPLEURS RÉPARTITEUR	10
EMBOUT SANS CLAPET	11
EMBOUT À CLAPET	12
SERIE 107S	13-16
SERIE 107SP	17-20

**QUICK RELEASE COUPLINGS FOR ALL KINDS OF FLUIDS
COUPLEUR RAPIDE TOUS FLUIDES**

One Handed connection and disconnection
Ei Connexion & déconnexion à une main

SERIE 107 ISO 6150 - C

NBR (Nitrile)

Main properties: Resistant to oil and petrol good ageing characteristics, high abrasion resistance.

Applications standards
Bonne résistance mécanique
Bonne résistance aux hydrocarbures

FPM (Viton)

Main properties: Outstanding heat resistant performance, excellent resistance to oils, chemicals, solvent, active oxygen, and weather.

Bonne résistance chimique
Bonne résistance à la T°
Bonne résistance aux carburants
Bonne résistance aux solvants

EPDM (Ethylène - Propylène)

Main properties: Ethylene Propylene, High mechanical strength, excellent resistance to high and low temperatures and to active oxygen and weather. Good resistance to chemical media.

Bonne résistance à la T°
Bonne résistance à l' eau froide
Bonne résistance à l' eau chaude
Bonne résistance à la vapeur
Recommandé pour glycol

PTFE (Teflon)

For very aggressive media special constructions with PTFE seals (Teflon) are available.

Recommandé pour les applications chimiques très agressives
Très Résistant à basse température
Très résistant à haute température

	Matériau					Seal Joint		
	Steel zinc plated Acier zingué	Brass - Lation	AISI 316 Ti or similar Inox 316 Ti	Polyamide 11/12	Polyamid 11/12 Polyacétal - Polyacétal	NBR Nitrile	FPM Viton	EPDM
Acetate (Ethyl Acetate & Amyl Acetate)	✓	✓	✓	✓	✓			x
Acetic acid 10%	—	—	✓	—	✓			x
Acetone	✓	✓	✓	✓	✓			x
Acetylene	✓	✓	✓	✓	✓	x	x	x
Aero Engine Fuel BP, Esso Avgas100/130	✓	✓	✓	✓	■	x	x	
Aero Engine Oil BP : AIRO 1210, Esso:AVIATON-120 Shell:AIRO-120, DERD 2487 DERD 2497, DTD 585	✓	✓	✓	✓	■	x	x	
Skydrol	✓	—	—	—	—			x
Oronite	✓	—	—	—	—			x
Air, compressed	✓	✓	✓	✓	✓	x	x	
Air, hot up to 120°C	✓	✓	✓	■	—	x	x	
Air, hot up to 200°C	✓	✓	✓	—	—			x
Alcohol	✓	✓	✓	✓	✓			x
Alum	—	—	✓	—	✓	x	x	x
Alkalies	—	■	✓	✓	■	x	x	
Ammonia, Liquid	■	—	✓	✓	—			x
Ammonium Sulphate Solution	—	—	✓	✓	■	x	x	x
Amyl Alcohol	✓	✓	✓	✓	✓			x
Aniline	✓	—	✓	■	—			x
Benzole	✓	✓	✓	✓	✓			x
Borax	✓	✓	✓	—	—			x
Bultane	✓	✓	✓	✓	✓	x	x	
Bultane	✓	—	✓	—	—	x	x	
Butyl Alcohol	—	✓	✓	✓	✓			x
Carbon Dixide	—	✓	✓	✓	✓	x	x	x
Carbon Dioxide, dry	—	✓	✓	✓	✓	x	x	x
Carbon Dioxide liquid	—	✓	✓	✓	■	x	x	x
Carbon Bisulphide	✓	—	✓	—	—			x
Chloride of Barium	—	✓	■	✓	✓	x	x	x
Chromic Acid	—	—	■	■	—			x
Citric Acid	—	■	✓	—	■	x	x	
Creosote	✓	—	✓	—	—			x
Cresol	■	✓	✓	—	—			x
Cresol, Cresylic Acid	✓	—	✓	—	—			x
Cupric Chloride	✓	—	■	—	—	x	x	x
Cyclohexane	✓	—	✓	■	✓			x
Dimethylamine	✓	—	✓	—	—			x
Emulsion. (Water/Oil)	■	✓	✓	✓	✓	x	x	
Ether	✓	✓	✓	✓	✓			x

	Matériau					Seal Joint		
	Steel zinc plated Acier zingué	Brass - Lation	Inox 316 Ti ou Similaire	Polyamide 11/12 PA 11/12	Polyacétal	NBR Nitrile	FPM Viton	EPDM
Ethyl Alcohol	✓	—	✓	✓	✓	x		x
Ethylene	✓	✓	✓	✓	✓			x
Formalin	✓	✓	✓	—	■	x	x	x
Formic Acid	—	■	✓	—	—			x
Frigen	✓	✓	✓	✓	✓	x	x	
Gasoline, Refined	✓	—	✓	—	—	x	x	
Gas, Blast Furnace	■	✓	✓	—	■			x
Gas, Coal	■	✓	✓	✓	✓			x
Gas, Coke Oven	■	✓	✓	■	■	x		
Gas, Lighting	✓	✓	✓	✓	✓	x	x	
Gas, Naphtalene content	✓	✓	✓	✓	■	x	x	
Gas, Natural	✓	✓	✓	✓	✓	x	x	
Gas, Town	✓	✓	✓	✓	✓	x		
Gear Oil	✓	—	✓	—	✓	x	x	
Glucose	—	✓	✓	✓	✓	x	x	x
Glycerine	✓	✓	✓	✓	✓	x	x	x
Glycol	✓	✓	✓	✓	✓	x		x
Helium	✓	✓	✓	✓	✓	x	x	x
Hexane	✓	—	✓	✓	■	x	x	
Hydrocarbons	✓	✓	✓	✓	✓	x	x	
Hydrogen	✓	✓	✓	✓	■	x	x	
Hydrogen Gas	✓	—	✓	—	—	x	x	
Hydrogen Sulphide, Humid	—	■	✓	✓	—			x
Hydrogen Sulphide, dry	—	✓	✓	✓	✓			x
Hyrogen Peroxide 30%	—	—	✓	✓	—			x
Isoproyl Alcohol	✓	—	✓	■	✓	x	x	x
Kerosene, JP 1	✓	✓	✓	✓	✓	x	x	
Keton, Methlyl Ethyl	✓	✓	✓	✓	✓			x
Latex, liquid up to 130°C	✓	✓	✓	■	■			x
Lubricating Oil	✓	✓	✓	✓	✓	x	x	
Lye, Caustic	—	✓	✓	✓	■			x
Lye, Hyochorous Acid	—	—	✓	—	■			
Lye, Pickling	—	MS60	✓	■	■			x
Magnesium Carbonate	✓	—	✓	✓	✓	x	x	x
Magnesium Hydroxide	✓	✓	✓	✓	✓	x	x	x
Magnesium Sulphate. M.Sulfat	—	—	✓	✓	✓	x	x	x
Mercury	✓	—	✓	✓	✓	x	x	x
Methane	✓	✓	✓	✓	✓	x	x	
Methanol	✓	✓	✓	✓	✓	x	x	
Methyl Alcohol	✓	✓	✓	■	✓	x	x	
Methyl Ethyl Ketone	✓	—	✓	✓	✓			x

**QUICK RELEASE COUPLINGS FOR ALL KINDS OF FLUIDS
COUPLEUR RAPIDE TOUS FLUIDES**

One Handed connection and disconnection
Ei Connexion & déconnexion à une main

SERIE 107 ISO 6150 - C

NBR (Nitrile)

Main properties: Resistant to oil and petrol good ageing characteristics, high abrasion resistance.

Applications standards
Bonne résistance mécanique
Bonne résistance aux hydrocarbures

FPM (Viton)

Main properties: Outstanding heat resistant performance, excellent resistance to oils, chemicals, solvent, active oxygen, and weather.

Bonne résistance chimique
Bonne résistance à la T°
Bonne résistance aux carburants
Bonne résistance aux solvants

EPDM (Ethylène - Propylène)

Main properties: Ethylene Propylene, High mechanical strength, excellent resistance to high and low temperatures and to active oxygen and weather. Good resistance to chemical media.

Bonne résistance à la T°
Bonne résistance à l' eau froide
Bonne résistance à l' eau chaude
Bonne résistance à la vapeur
Recommandé pour glycol

PTFE (Teflon)

For very aggressive media special constructions with PTFE seals (Teflon) are available.

Recommandé pour les applications chimiques très agressives
Très Résistant à basse température
Très résistant à haute température

	Matériau						Seal Joint			
	Steel zinc plated Acier zingué	Brass - Lation	AISI 316 Ti or similar	Inox 316 Ti	Polyamide 11/12	Polyamid 11/12	Polyacetal - Polyacétal	NBR Nitrile	FPM Viton	EPDM
Symbols - Symboles										
✓ Fully resistant / Très résistant										
▣ Partly / Résistance moyenne										
— Non-resistant / Non résistant										
Methyl Benzene	✓	—	✓	—	—	—	—		x	
Milk	✓	—	✓	✓	✓	✓	—	x	x	
Napta	✓	—	✓	—	—	—	—	x	x	
Naptalene	✓	✓	✓	✓	✓	✓	—		x	
Naptenic. Acid	✓	—	✓	—	—	—	—	x	x	
Nitrate of Ammonium	✓	—	✓	—	—	—	—	x	x	x
Nitric Acid, up to 35°C	—	✓	✓	—	—	—	—		x	
Nitrogen	✓	✓	✓	✓	✓	✓	—	x	x	x
Nitro-Solution (no synthetic resin thinners)	✓	✓	✓	—	—	—	—		x	
Oil, Coal Tr	✓	—	✓	✓	▣	—	—		x	
Oil, Crude	✓	✓	✓	✓	✓	✓	—	x	x	
Oil, Diesel	✓	✓	✓	✓	✓	✓	—	x		
Oil, Diesel up to 120°C	—	✓	✓	▣	—	—	—		x	
Oil, Fuel up to 100°C	✓	✓	✓	▣	—	—	—	x	x	
Oil, up to 200°C/ 300°Cup to (special type)	✓	▣	✓	—	—	—	—		FFKM	
Oil, Fuel 5x5	✓	✓	✓	▣	✓	—	—		x	
Oil, Hydraulic Chlorinated	▣	▣	✓	—	▣	—	—		x	
Oil, Hydraulic up to 120°C	✓	✓	✓	▣	▣	—	—	x	x	
Oil, Linseed	✓	✓	✓	✓	✓	—	—	x	x	
Oil, Mineral	▣	✓	✓	✓	✓	—	—	x	x	
Oil, Transformer	▣	▣	✓	✓	▣	—	—	x		
Oleic Acid	✓	—	✓	✓	✓	—	—	x	x	
Oxalic Acid	▣	▣	✓	✓	✓	—	—		x	x
Oxygen, fat free	—	✓	✓	✓	▣	—	—		x	
Paraffin	✓	✓	✓	✓	✓	—	—	x		
Paraffin, (Wax)	✓	✓	✓	✓	✓	—	—	x		
Pentachlorophenole	✓	—	—	—	—	—	—		x	
Petrol Ether	—	✓	✓	✓	✓	—	—	x		
Petrol	✓	✓	✓	✓	✓	—	—	x		
Phenol Solution	▣	✓	✓	—	—	—	—			
Phosphoric Acid 10%	—	—	✓	—	—	—	—	x	x	
Potassium Cyanide	✓	—	✓	▣	—	—	—		x	x
Potassium Dichromate	✓	—	✓	—	▣	—	—		x	x
Potassium Sulphate	✓	—	✓	—	—	—	—	x	x	x
Potassium Hydroxide	✓	—	✓	✓	▣	—	—		x	
Propane	✓	✓	✓	✓	✓	—	—	x	x	
Prussic Acid	✓	—	✓	—	—	—	—		x	
Salt Solution	—	▣	▣	✓	▣	—	—		x	
Sea Water	—	▣	✓	—	—	—	—	x	x	x

	Matériau						Seal Joint			
	Steel zinc plated Acier zingué	Brass - Lation	Inox 316 Ti or Similaire	Polyamide 11/12 PA 11/12	Polyacétal		NBR Nitrile	FPM Viton	EPDM	
Symbols - Symboles										
✓ Fully resistant / Très résistant										
▣ Partly / Résistance moyenne										
— Non-resistant / Non résistant										
Soap Solution	—	✓	✓	✓	✓	—	x	x	x	
Soda Solution	—	▣	✓	✓	▣	—	x	x	x	
Sodium Acetate	—	—	✓	✓	✓	—	x		x	
Sodium Bicarbonate	—	—	▣	✓	✓	—		x	x	
Sodium Carbonate	✓	—	✓	✓	✓	—	x	x	x	
Sodium Chloride	✓	—	✓	✓	✓	—	x	x	x	
Sodium Cyanide	✓	—	✓	—	▣	—			x	
Sodium Sulphide	✓	▣	✓	—	—	—		x	x	
Steam, up to 150°C	▣	▣	✓	—	—	—			x	
Steam, up to 250°C	▣	▣	✓	—	—	—			PTFE	
Sulphide of barium	✓	▣	✓	✓	—	—	x	x	x	
Sulphur Dioxide, Gas	—	✓	✓	—	—	—			x	
Sulphuret of Carbon	—	✓	✓	—	✓	—			x	
Syntetic Resin Thinners (no nitrosolution)	✓	✓	✓	▣	▣	—			x	
Tar	✓	✓	✓	✓	✓	—	x	x		
Tetrachloride of Titanium	✓	—	✓	—	—	—			x	
Toluol, dry	▣	✓	✓	✓	✓	—			x	
Trichlorethylene	✓	▣	✓	✓	—	—			x	
Turbine Fuel, BP: ATK 2494, ESSO:MIL-F56/16, SHELL:ATF 650	✓	✓	✓	✓	▣	—	x	x		
Turbine Oil, Esso:35	✓	✓	✓	✓	▣	—	x	x		
Turb-oil 1 S (MILL 7808)	▣	▣	✓	✓	▣	—	x	x		
Vacuum (Strengthened Valve Springs)	✓	✓	✓	✓	✓	—				
Vegetable Oil	✓	—	✓	✓	✓	—	x	x	x	
Water, Distilled	—	—	✓	✓	✓	—			x	
Water, Deionized	—	—	✓	—	—	—	x	x		
Water, Demineralised	—	—	✓	—	—	—			x	
Water, up to 80°C	▣	✓	✓	▣	▣	—	x	x	x	
Water, over 80°C	▣	✓	✓	▣	—	—			x	
Water, Cooling	▣	▣	✓	✓	▣	—	x	x		
Xylene	✓	✓	✓	✓	✓	—			x	

**QUICK RELEASE COUPLINGS FOR ALL KINDS OF FLUIDS
COUPLEUR RAPIDE TOUS FLUIDES**

One Handed connection and disconnection
Ei Connexion & déconnexion à une main

SERIE 107 ISO 6150 - C

There are different types according to flow type. Différentes configurations d'obturation selon les débits voulus

<p>Standard Serie / Série Standard</p> <p>Single Shut - off / Simple obturation</p> <p>(Coupler with valve, plug without valve) (Coupleur à clapet - embout sans clapet)</p>	<p>B Serie / Série B</p> <p>Double Shut - off / Double obturation</p> <p>(Coupler and plug with valve) (Coupleur et embout avec clapet)</p>	<p>F Serie / Série F</p> <p>Full Flow / Passage Libre</p> <p>(Coupler and plug without valve) (Coupleur et embout sans clapet)</p>	<p>S Serie / Série S</p> <p>Single Shut-off and Self venting Simple obturation sécurité</p> <p>(Coupler with valve, plug without valve) (Coupleur à clapet - embout sans clapet)</p>
--	---	--	--

B Type / Série B

B - Type (Double Shut off Couplers)

While letting in the coupler - valf a pin open the stop valve in fastener fitting and releases the flow. Please, order for mutual blocking of coupler - systems always the B execution, because a pin valve - fastener fitting can not be combined with an single shut off couplers (no flow)

Série B (Double obturation)

Quand connecte l'embout, son clapet s'ouvre grâce au pointeau du coupleur Dans tous les cas de la fonction double obturation, il faut impérativement utiliser un embout double obturation (Version B)

F Type / Série F

F - Type (Full Flow Quick Release Couplers)

Plug and socket without valve. Please, order for mutual blocking of coupler - systems always the F execution.

Série F (Coupleur et embout sans clapet)

Toujours utiliser un coupleur passage libre et un embout passage libre

S Type / Série S

S - Type (Self Venting)

TST couplers of the Serie are equipped normally with an additional safety - lock system and self venting.

1st push on button : venting 1st push on button causes venting of the plug and hose and the valve closes whilst the plug remains connected.
2nd push on button : disconnection Because the hose has already vented, this 2nd push on the button allows disconnection of the plug from the socket without violent ejection and therefore without hose whip.

Les coupleurs série S sont équipés du système Safety Lock

Première pression sur le bouton :
Décompression automatique du flexible
Deuxième pression sur le bouton :
Dégagement du flexible sans risque

A	Aluminium	Aluminium
B	Brass	Laiton
C	Steel	Acier
E	EPDM seal	Joint EPDM
G	Parallel gas thread (BSP)	Filetage cylindrique (BSP)
H	Case hardening	Durci
J	Silicone seal	Joint Silicone
K	Chrome plated	Finition chromée
L	CR seal (neoprene)	Joint Neoprène
Ni	NBR seal (nitrile)	Joint Nitrile
N	Nickel plated	Finition nickelée
P	Teflone seal (PTFE)	Joint PTFE
R	Red Colour	Filetage conique
S	Stainless steel AISI(303=S3,420=S4,.316L=S6)	Acier inoxydable AISI (303=S3,420=S4,.316L=S6)
T	Sealing coat on the thread	Filetage téfloné
V	Fluorocarbon (FFP)	Joint Viton (FPM)
Y	Yellow Colour	Taune
Z	Zinc Plated	Finition zinguée
W	Perfluoroelastomer (FFPM)	Joint perfluoré (FFPM)
X	Without plating	Sans traitement de surface
PS	Plastic	Plastique
VA	Vacuum	Vide

Attention:

For optimal functioning, it is essential to use sockets and plugs of the same materials.

Pour un fonctionnement optimal, il est essentiel d'utiliser coupleur & embout de même construction

For optional orders please add the symbol of your option end of the order no.
Pour commander des options, ajouter le symbole en fin de référence

- Seals - Joints:
- E - Ethylene - propylene
 - J - Fluorosilicone (FMQ)
 - P - Téflon (PTFE)
 - W - Perfluoré (FFKM)
 - L - Chloroprene (CR)
 - M - Nitrile (NBR)
 - V - Viton (FPM)



● **tst 107.03** ●

Body Size / Passage
ø3mm / 7mm²



● **tst 107.06** ●

Body Size / Passage
ø5.5mm / 23,5mm²

■ SERIE 107 ISO 6150 - C

Standard Serie / Série Standard:

argely stainless steel with 17 % chrome content.
coupling back adaptor: anti-corrosion threaded steel Various
ases, oils, hydrocarbons...

nox à 17% de chrome Pression maxi: 50 bars
our utilisation air, gaz, hydrocarbures

S4 Serie / Série S4:

nox à 17% de chrome Pression maxi: 50 bars
our utilisation air, eau, gaz, huiles...

S6 Serie / Série S6:

ISI 316L stainless steel with various corrosive gases, sea water,
arge number of chemical products ina corrosive environment.

nox AISI 316L Pression maxi: 15 bars
our utilisation produits chimiques,
nvironnement corrosif

H4 Serie / Série H4:

nox à 17% de chrome et
nox AISI 316L
ression maxi: 300, 350 & 450 bars
our utilisation haute pression
au et gaz

H6 Serie / Série H6:

ISI 316L stainless steel Plug body and push button high
esistance stainless steel. High pressure liquids and gases,
ompressed air with demanding resistance to corrosion
equirements or decontamination.

nox AISI 316L
ression maxi: 300, 350 & 450 bars
our utilisation haute presion
au et gaz
nvironnement corrosif

VA Serie / Série VA:

Internal components are AISI 316L stainless steel.
Proposed for primary vacuum to 1.10-3 torr and for all
applications demanding high integrity leak tightness.
(Standard product is for Normal vacuumed purposes)

Préconiser pour le vide primaire 1.10-3
Et pour toute utilisation en milieu étanche
Le standard est utilisé pour un vide "normal"

Socket Coupleur	Unvalved plug Embout sans clapet	Valved plug Embout avec clapet
standard	standard	standard / S4
S4	standard	S4
S6	S6	S6
S4 / H4	standard	S4 / H4
S6 / H6	S6 / H6	S6 / H6
S4 / VA	standard	S4 / VA



● **tst 107.08** ●
Body Size / Passage
ø8mm / 50mm²

● **tst 107.11** ●
Body Size / Passage
ø11mm / 95mm²

● **tst 107.19** ●
Body Size / Passage
ø19mm / 283.5mm²

SERIE 107 ISO 6150 - C ■

Safety keys Couplers / Clés de sécurité

10 safety keys

- to prevent all errors of connection between:
- different gases (risk of explosion)
- different fluids
- to provide as systematic reference mark on the circuits.

10 clés de sécurité

- Pour prévenir toute erreur de connexion
- Entre gaz (risque d'explosion)
- Entre fluides
- Repérage organisé des circuits

References for Safety keys Couplers

Please add KEY Code (K..) end of the order no of the products.
(Ex: 107.03 EG 10 K00)

Referencement des clés de sécurité

Ajouter le code couleur à la fin de la référence des produits
Ex: 107.03EG10K00

YELLOW/ JAUNE - 180°

CODE : K00



VIOLET / VIOLET - 165°

CODE : K15



RED/ROUGE - 150°

CODE : K30



GREEN/VERT - 135°

CODE : K45



BLUE/BLEU - 120°

CODE : K60



BROWN/MARRON - 105°

CODE : K75



BLACK/NOIR - 90°

CODE : K90



RED-BLACK/ROUGE-NOIR - 80°

CODE : K100



RED-GREEN/ROUGE-VERT - 70°

CODE : K110



RED-YELLOW/ROUGENOIR - 60°

CODE : K120



SAFETY KEYS COUPLERS ARE NOT FOR SALE IN GERMANY

Colour disc for built - in sockets Disque de couleur sur coupleur traversée de cloison

Colour disc for built - in sockets
for immediate visual identification of circuits

Disque de couleur sur coupleur traversée de cloison
Pour identification visuelle immédiate des circuits



H00 | H15 | H30 | H45 | H60 | H75 | H90

107.06 + + + + + + +



- Yellow / Jaune H00
- Violet / Violet H15
- Red / Rouge H30
- Green / Vert H45
- Blue / Bleu H60
- Brown / Marron H75
- Black / Noir H90

Safety keys Couplers / Options



Protection against dirt ingress code PK

In connected position the Chloroprene (CR) protector protects the functional components of the sockets against dirty and other external pollutants.

It must be combined with a YD push button.

Operating temperatures:
-20° C to + 90° C
(Not available for 107.03)

Protection anti-poussiera Code PK

Montée sur le coupleur, cette option en CR protège les pièces fonctionnelles contre les poussières ou autres agents extérieurs.

Doit être montée sur l'option YD
T°: -20° C to + 90° C

(Non disponible pour 107.03)



Raised push button code YD

Recommended for frequent connection / disconnection or use when wearing safety gloves.

Bouton dépassant code YD

Recommandé pour de fréquentes Connexion - déconnexion ou utilisation avec des gants.



Fixing device for socket dust cap code ZK

Fixation du bouchon de protection
Sur le coupleur
Code ZK



Safety Button Code ED

1. Pull back safety slider.
2. Push button.

Boutonde sécurité Code ED

1. Tirer le bouton
2. Appuyer sur le bouton

**QUICK RELEASE COUPLINGS FOR ALL KINDS OF FLUIDS
COUPLEUR RAPIDE TOUS FLUIDES**

One Handed connection and disconnection
Connexion & déconnexion à une main

SERIE 107 ISO 6150 - C

Dust Caps - Bouchon de protection



Dust caps for couplings
Bouchon pour coupleur

107.06 KG 00



Dust caps for plugs
Bouchon pour embout

107.06 KU 00



Dust caps for plugs (PP)
Bouchon pour embout en Polypropylène

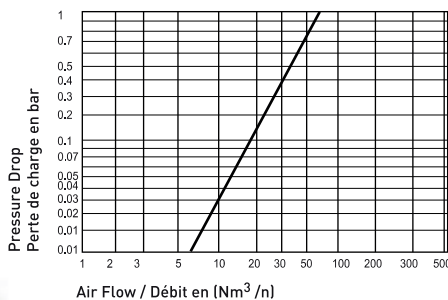
107.06 UTK 00

SERIE 107.06

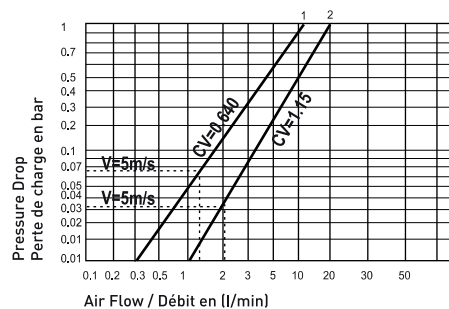
Couplings & Plugs - Coupleurs & Embouts

	Standard Serie	S4 Serie	S6 Serie	H4 Serie	H6 Serie	Va Serie
Nominal Ø (mm) - Diamètre nominal	5.5	5.5	5.5	5.5	5.5	5.5
Cross section (mm ²) - Section de passage	23.5	23.5	23.5	23.5	23.5	23.5
Max. Working Press. - Pression maximale	Bar	50	50	15	450	10-3 torr
	PSI	725	725	217	6530	
O-Ring / Joint (100°C)	NBR	Option - Option				

Pneumatic charts flow rate/Pressure drop from the single shut-off system
Courbe pneumatique débit/perte de charge
Coupleur simple obturation



Hydraulic charts flow rate/Pressure drop
Courbe hydraulique débit/perte de charge



QUICK RELEASE COUPLINGS FOR ALL KINDS OF FLUIDS
COUPLEUR RAPIDE TOUS FLUIDES

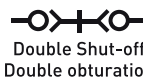
One Handed connection and disconnection
Connexion & déconnexion à une main



SERIE 107 ISO 6150 - C

(B - SERIE)

(F - SERIE)



Couplings / Coupleurs

	Ø Nominal Dia NW	Connection Raccord (T)	Order No/Référence	Order No/Référence	Order No/Référence	d (mm)	L (mm)		
<p>Couplings Female Thread Coupleur taraudé</p> <p>* Conical / Conique</p>	06	1/8" BSP	107.06 DG 10	107.06 DGB 10	107.06 DGF 10	26	49.5		
		1/8" NPT	107.06 NG 10	107.06 NGB 10	107.06 NGF 10	26	47.5		
		1/4" BSP	107.06 DG 13	107.06 DGB 13	107.06 DGF 13	26	52.5		
		1/4" BSPT*	107.06 QG 13	107.06 QGB 13	107.06 QGF 13	26	60.5		
		1/4" NPT	107.06 NG 13	107.06 NGB 13	107.06 NGF 13	26	51.5		
		3/8" BSP	107.06 DG 17	107.06 DGB 17	107.06 DGF 17	26	60.5		
		3/8" NPT	107.06 NG 17	107.06 NGB 17	107.06 NGF 17	26	60.5		
		1/2" BSP	107.06 DG 21	107.06 DGB 21	107.06 DGF 21	26	63.5		
		1/2" NPT	107.06 NG 21	107.06 NGB 21	107.06 NGF 21	26	63.5		
		9/16"-16UN	107.06 UG 14	107.06 UGB 14	107.06 UGF 14	26	64		
		<p>Couplings Male Thread Coupleur fileté cylindrique</p>	06	1/8" BSP	107.06 EG 10	107.06 EGB 10	107.06 EGF 10		50
				1/8" NPT	107.06 TG 10	107.06 TGB 10	107.06 TGF 10		50
1/4" BSP	107.06 EG 13			107.06 EGB 13	107.06 EGF 13		50		
1/4" NPT	107.06 TG 13			107.06 TGB 13	107.06 TGF 13		50		
3/8" BSP	107.06 EG 17			107.06 EGB 17	107.06 EGF 17		50		
1/2" BSP	107.06 EG 21			107.06 EGB 21	107.06 EGF 21		50		
<p>Couplings for Rubber Hose Coupleur cannelé</p>	06	Ø 6mm	107.06 HG 06	107.06 HGB 06	107.06 HGF 06		49		
		Ø 8mm	107.06 HG 08	107.06 HGB 08	107.06 HGF 08		49		
		Ø 10mm	107.06 HG 10	107.06 HGB 10	107.06 HGF 10		49		
		Ø 13mm	107.06 HG 13	107.06 HGB 13	107.06 HGF 13		49		
<p>Couplings for Plastic Tube Coupleur pour tube plastique</p>	06	Ø 6x8mm	107.06 PG 06	107.06 PGB 06	107.06 PGF 06		74.5		
		Ø 8x10mm	107.06 PG 08	107.06 PGB 08	107.06 PGF 08		74.5		
<p>Couplings for Copper Tube Coupleur pour tube cuivre</p>	06	Ø 6x8mm	107.06 CG 06	107.06 CGB 06	107.06 CGF 06		76.5		
		Ø 8x10mm	107.06 CG 08	107.06 CGB 08	107.06 CGF 08		76.5		
<p>Couplings for Stainless Steel Tube Coupleur pour tube inoxydable</p>	06	Ø 6mm	107.06 IG 06	107.06 IGB 06	107.06 IGF 06		63		
		Ø 8mm	107.06 IG 08	107.06 IGB 08	107.06 IGF 08		63		
		Ø 10mm	107.06 IG 10	107.06 IGB 10	107.06 IGF 10		63		
		Ø 1/4"	107.06 IG 6.3	107.06 IGB 6.3	107.06 IGF 6.3		63		
		Ø 3/8"	107.06 IG 9.5	107.06 IGB 9.5	107.06 IGF 9.5		63		

**QUICK RELEASE COUPLINGS FOR ALL KINDS OF FLUIDS
COUPLEUR RAPIDE TOUS FLUIDES**

One Handed connection and disconnection
Connexion & déconnexion à une main



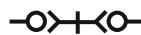
SERIE 107 ISO 6150 - C

(B SERIE)

(F SERIE)



Single Shut-off
Simple obturation



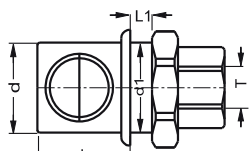
Double Shut-off
Double obturation



Full Flow
Passage libre

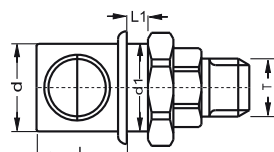
Built - in Couplings
Coupleurs traversée de cloison

Nominal Dia NW	Connection Raccord (T)	Order No/Référence			d (mm)	d1 (mm)	L (mm)	L1 (mm)
		Single Shut-off Simple obturation	Double Shut-off Double obturation	Full Flow Passage libre				



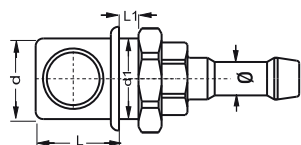
Couplings Female Thread
Coupleur taraudé
traversée de cloison

06	1/8" BSP	1071.06 DG 10	1071.06 DGB 10	1071.06 DGF 10	26	26	26	6.5
	1/8" NPT	1071.06 NG 10	1071.06 NGB 10	1071.06 NGF 10	26	26	26	6.5
	1/4" BSP	1071.06 DG 13	1071.06 DGB 13	1071.06 DGF 13	26	26	26	6.5
	1/4" NPT	1071.06 NG 13	1071.06 NGB 13	1071.06 NGF 13	26	26	26	6.5
	3/8" BSP	1071.06 DG 17	1071.06 DGB 17	1071.06 DGF 17	26	26	26	6.5
	3/8" NPT	1071.06 NG 17	1071.06 NGB 17	1071.06 NGF 17	26	26	26	6.5
	1/2" BSP	1071.06 DG 21	1071.06 DGB 21	1071.06 DGF 21	26	26	26	6.5
	9/16"-18UN	1071.06 UG 14	1071.06 UGB 14	1071.06 UGF 14	26	26	26	6.5



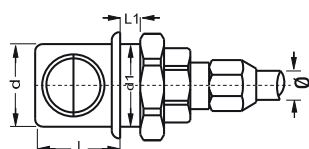
Couplings Male Thread
Coupleur fileté cylindrique
traversée de cloison

06	1/8" BSP	1071.06 EG 10	1071.06 EGB 10	1071.06 EGF 10	26	26	26	6.5
	1/8" NPT	1071.06 TG 10	1071.06 TGB 10	1071.06 TGF 10	26	26	26	6.5
	1/4" BSP	1071.06 EG 13	1071.06 EGB 13	1071.06 EGF 13	26	26	26	6.5
	1/4" NPT	1071.06 TG 13	1071.06 TGB 13	1071.06 TGF 13	26	26	26	6.5
	3/8" BSP	1071.06 EG 17	1071.06 EGB 17	1071.06 EGF 17	26	26	26	6.5
	3/8" NPT	1071.06 TG 17	1071.06 TGB 17	1071.06 TGF 17	26	26	26	6.5
	1/2" BSP	1071.06 EG 21	1071.06 EGB 21	1071.06 EGF 21	26	26	26	6.5



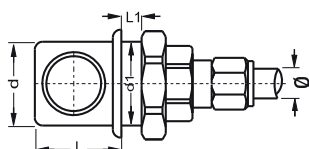
Couplings for Rubber Hose
Coupleur cannelé traversée de cloison

06	Ø 6mm	1071.06 HG 06	1071.06 HGB 06	1071.06 HGF 06	26	26	26	6.5
	Ø 8mm	1071.06 HG 08	1071.06 HGB 08	1071.06 HGF 08	26	26	26	6.5
	Ø 10mm	1071.06 HG 10	1071.06 HGB 10	1071.06 HGF 10	26	26	26	6.5
	Ø 13mm	1071.06 HG 13	1071.06 HGB 13	1071.06 HGF 13	26	26	26	6.5



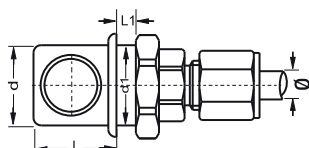
Couplings for Plastic Tube
Coupleur pour tube plastique
traversée de cloison

06	Ø 6x8mm	1071.06 PG 06	1071.06 PGB 06	1071.06 PGF 06	26	26	26	6.5
	Ø 8x10mm	1071.06 PG 08	1071.06 PGB 08	1071.06 PGF 08	26	26	26	6.5



Couplings for Copper Tube
Coupleur pour tube cuivre
traversée de cloison

06	Ø 6x8mm	1071.06 CG 06	1071.06 CGB 06	1071.06 CGF 06	26	26	26	6.5
	Ø 8x10mm	1071.06 CG 08	1071.06 CGB 08	1071.06 CGF 08	26	26	26	6.5



Couplings for Stainless Steel Tube
Coupleur pour tube inoxydable
traversée de cloison

06	Ø 6mm	1071.06 IG 06	1071.06 IGB 06	1071.06 IGF 06	26	26	26	6.5
	Ø 8mm	1071.06 IG 08	1071.06 IGB 08	1071.06 IGF 08	26	26	26	6.5
	Ø 10mm	1071.06 IG 10	1071.06 IGB 10	1071.06 IGF 10	26	26	26	6.5
	Ø 1/4"	1071.06 IG 6.3	1071.06 IGB 6.3	1071.06 IGF 6.3	26	26	26	6.5
	Ø 3/8"	1071.06 IG 9.5	1071.06 IGB 9.5	1071.06 IGF 9.5	26	26	26	6.5

**QUICK RELEASE COUPLINGS FOR ALL KINDS OF FLUIDS
COUPLEUR RAPIDE TOUS FLUIDES**

One Handed connection and disconnection
Connexion & déconnexion à une main




SERIE 107 ISO 6150 - C ■

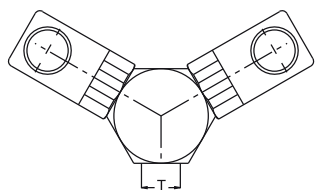
**Built - in Couplings
Coupleurs répartiteur**

Ø
Nominal
Dia
NW

Connection / Raccord
(T/Ø)


Single Shut-off / Simple obturation
Order No/Référence


Full Flow / Passage libre
Order No/Référence



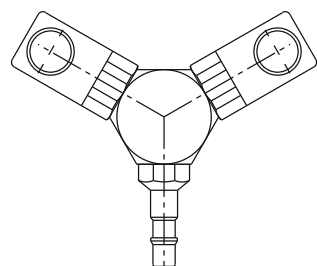
Fixed Y Couplings
Coupleur en Y fixe

06

1/4" BSP
3/8" BSP
1/2" BSP

107.06 2GS 13
107.06 2GS 17
107.06 2GS 21

107.06 2GSF 13
107.06 2GSF 17
107.06 2GSF 21

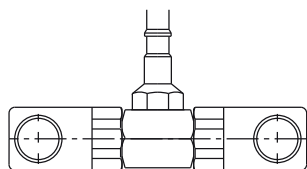


Mobile Y Couplings
Coupleur en Y mobile

06

107.06 2GU 00

107.06 2GUF 00

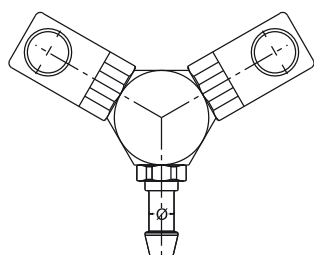


Mobile T Couplings
Coupleur en Té mobile

06

107.06 2GU 01

107.06 2GUF 01



Rubber Hose Y Couplings
Coupleur en Y mobile

06

Ø 13mm

107.06 2GH 13

107.06 2GHF 13

QUICK RELEASE COUPLINGS FOR ALL KINDS OF FLUIDS
COUPLEUR RAPIDE TOUS FLUIDES

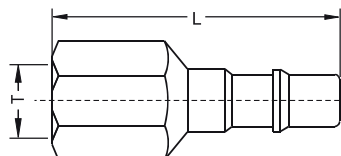
One Handed connection and disconnection
Connexion & déconnexion à une main



SERIE 107 ISO 6150 - C ■

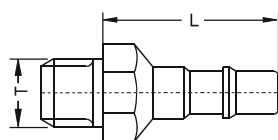


Unvalved Plugs
Embout sans clapet



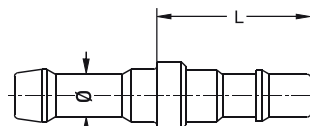
Plugs Female Thread
Embout taraudé

* Conical / Conique

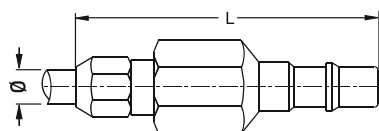


Plugs Male Thread
Embout fileté cylindrique

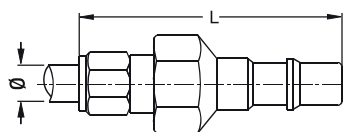
* Conical / Conique



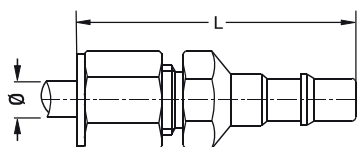
Plugs for Rubber Hoses
Embout cannelé



Plugs for Plastic Tube
Embout pour tube plastique



Plugs for Copper Tube
Embout pour tube cuivre



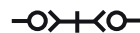
Plugs for Stainless Steel Tube
Embout pour tube inoxydable

Nominal Dia NW	Connection Raccord (T / ∅)	Single Shut-off / Passage Libre		L (mm)
		Order No/Référence		
06	1/8" BSP	107.06 DU 10	44	
	1/8" NPT	107.06 NU 10	44	
	1/4" BSP	107.06 DU 13	50	
	1/4" BSPT*	107.06 QU 13	50	
	1/4" NPT	107.06 NU 13	50	
	3/8" BSP	107.06 DU 17	52	
	3/8" NPT	107.06 NU 17	51	
	1/2" BSP	107.06 DU 21	54	
	1/2" NPT	107.06 NU 21	54	
	M14x1.25	107.06 DUM 14	50	
	9/16-20 UN	107.06 UU 14-74	52	
	06	1/8" BSP	107.06 EU 10	36
		1/8" BSPT*	107.06 RU 10	35.5
		1/8" NPT	107.06 TU 10	36.5
1/4" BSP		107.06 EU 13	37	
1/4" BSPT*		107.06 RU 13	35.5	
1/4" NPT		107.06 TU 13	38.5	
3/8" BSP		107.06 EU 17	40	
3/8" BSPT*		107.06 RU 17	37.5	
3/8" NPT		107.06 TU 17	39	
1/2" BSP		107.06 EU 21	42	
M14x1.25		107.06 EUM 14-08	37	
1/2" BSPT*		107.06 RU 21	37,5	
1/2" NPT	107.06 TU 21	38		
06	∅ 4mm	107.06 HU 04	34	
	∅ 6mm	107.06 HU 06	34	
	∅ 8mm	107.06 HU 08	34	
	∅ 10mm	107.06 HU 10	34	
	∅ 13mm	107.06 HU 13	36	
06	∅ 6/8 mm	107.06 PU 06	74	
	∅ 8/10 mm	107.06 PU 08	74	
06	∅ 4/6 mm	107.06 CU 04	72.5	
	∅ 6/8 mm	107.06 CU 06	72.5	
	∅ 8/10 mm	107.06 CU 08	72.5	
06	∅ 6 mm	107.06 IU 06	72.5	
	∅ 8 mm	107.06 IU 08	72.5	
	∅ 10 mm	107.06 IU 10	72.5	
	∅ 1/4"mm	107.06 IU 6.3	72.5	
	∅ 3/8"mm	107.06 IU 9.5	72.5	



SERIE **107B** ISO 6150 - C ■

(B-SERIE)



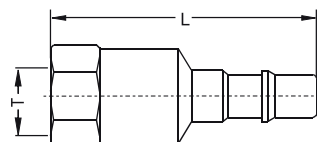
Order No/Référence

L
(mm)

Shut-off Plugs
Embout à clapet

Ø
Nominal
Dia
NW

Connection
Raccord
(T / Ø)

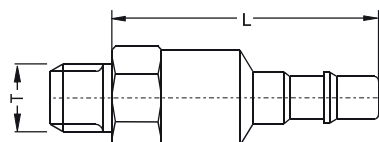


Plugs With Female Thread
Embout taraudé à clapet

* Conical / Conique

06

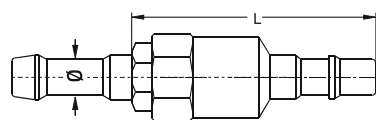
1/8" BSP	107.06 DUB 10	65
1/8" NPT	107.06 NUB 10	70
1/4" BSP	107.06 DUB 13	70
1/4" BSPT*	107.06 QUB 13	70
1/4" NPT	107.06 NUB 13	70
3/8" BSP	107.06 DUB 17	72
3/8" NPT	107.06 NUB 17	72
9/16" UN-18	107.06 UUB 14	72



Plugs With Male Thread
Embout fileté cylindrique à clapet

06

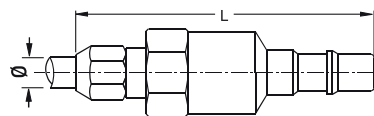
1/8" BSP	107.06 EUB 10	62
1/8" NPT	107.06 TUB 10	62
1/4" BSP	107.06 EUB 13	62
1/4" NPT	107.06 TUB 13	62
3/8" BSP	107.06 EUB 17	62
3/8" NPT	107.06 TUB 17	62
M14x1.25	107.06 EUB 14	62
9/16" UN-20	107.06 UNB 14	62



Plugs for Rubber Hoses
Embout cannelé à clapet

06

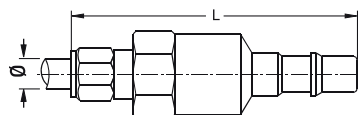
Ø 4mm	107.06 HUB 04	59
Ø 6mm	107.06 HUB 06	59
Ø 8mm	107.06 HUB 08	59
Ø 10mm	107.06 HUB 10	59
Ø 13mm	107.06 HUB 13	59



Plugs for Plastic Tube
Embout fileté plastique à clapet

06

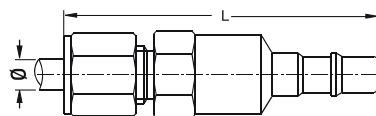
Ø 6/8 mm	107.06 PUB 06	92
Ø 8/10 mm	107.06 PUB 08	92



Plugs For coppers Tube
Embout pour tube à clapet

06

Ø 4/6 mm	107.06 CUB 04	94
Ø 8/10 mm	107.06 CUB 08	94



Plugs For Stainless Steeltube
Embout pour tube acier inoxydable à clapet

06

Ø 6 mm	107.06 IUB 06	94
Ø 8 mm	107.06 IUB 08	94
Ø 10 mm	107.06 IUB 10	94
Ø 1/4" mm	107.06 IUB 6.3	94
Ø 3/8" mm	107.06 IUB 9.5	94

SELF VENTING TYPE
SÉCURITÉ ANTI COUP DE FOUET

One Handed connection and disconnection
Connexion & déconnexion à une main

SERIE 107S ISO 6150 - C

SELF VENTING TYPE / SICHERHEITS-SCHNELLKUPPLUNG

TST 107S Quick release safety couplings for compressed air consisting of an 107S socket and 107 plug...

Construction:
Single shut - off system. Plug with an open passage.
The functional parts have a great resistance to wear and tear, shocks and corrosion:
- Stainless steel coupling bodies
- plug (13% chromium, content hardened and precision ground),
- large all - in - once steel push button (13% hardened chromium content),
- Nitrile seal (NBR)

La serie TST 107S - coupleur de securite anti coup de fouet est a associer avec un embout 107 passage libre

Construction:
Coupleur simple obturation - Embout passage libre
Corps de coupleur : Acier inox à 17% de chrome
Embout : Acier inox à 13% de chrome trempé, rectifié
Bouton : Acier inox à 13% de chrome trempé
Joints en Nitrile

TWO STAGE PUSH-BUTTON COUPLERS

- 1 st impulse on the push button: decompression
 - 2 st impulse on the push button: releasing plug
- The function of the safety prevents the possibility of dangerous hose-whip.

COUPLEUR 2 PRESSIONS

- Première pression : Décompression du flexible
- Deuxième pression : Désaccouplement de l'embout

La fonction sécurité prévient toute possibilité de coup de fouet



● **tst 107S.06** ●
Body Size / Passage
ø5.5mm / 23,5mm²



● **tst 107S.08** ●
Body Size / Passage
ø8mm / 50mm²



● **tst 107S.11** ●
Body Size / Passage
ø11mm / 95mm²

SERIE 107S.06



Couplings & Plugs - Coupleur et embout

Nominal Ø (mm) - Ø Nominal
Cross section (mm²) - Section de passage

Max. Working Press. -
Pression maximale

O-Ring / Joint (100°C)

Bar
PSI

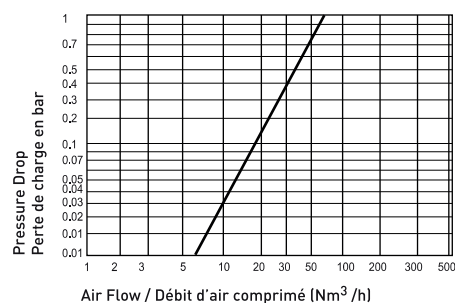
Standard Serie

5.5 mm
23.5 mm²

12
174

NBR

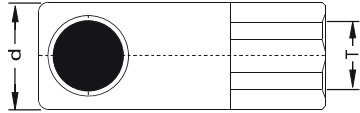

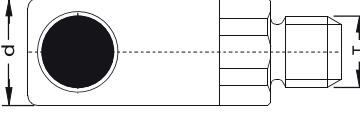
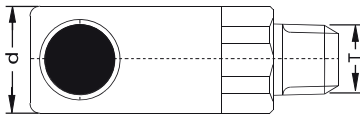
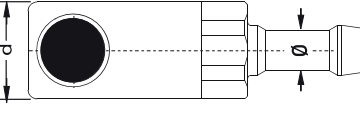
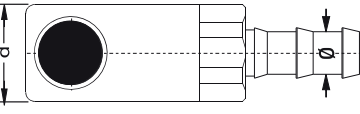
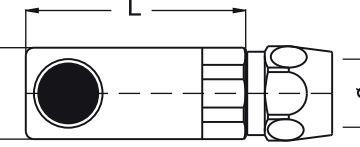
Pneumatic charts flow rate/Pressure drop from the single shut-off system
Courbe pneumatique débit/perte de charge
Coupleur simple obturation



One Handed connection and disconnection
Connexion & déconnexion à une main

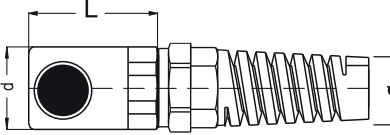
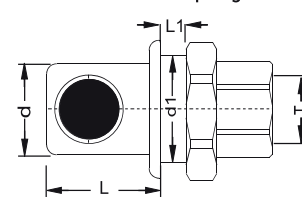
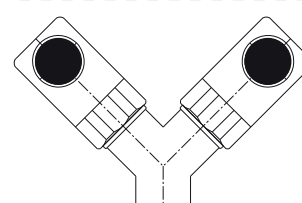
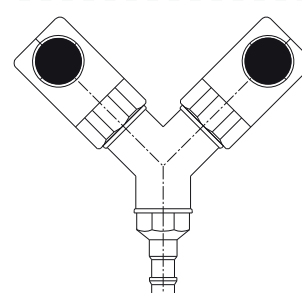


■ SERIE 107S ISO 6150 - C

Couplings / Coupleurs	Ø Nominal Dia NW	Connection Raccord (T / Ø)	Single Shut-off / Passage Libre		d (mm)	L (mm)
			Order No/Référence			
 Couplings Female Thread Coupleur taraudé	06	1/4" BSP	 107.06 DGS 13	22	22	
		1/4" NPT				107.06 NGS 13
		3/8" BSP				107.06 DGS 17
		3/8" NPT				107.06 NGS 17
		1/2" BSP				107.06 DGS 21
		1/2" NPT				107.06 NGS 21
 Couplings Male Thread Coupleur fileté cylindrique	06	1/4" BSP	107.06 EGS 13 107.06 EGS 17 107.06 EGS 21	22	22	
		3/8" BSP				
		1/2" BSP				
 Couplings with Male Conical Thread Coupleur fileté conique	06	1/4" BSPT	107.06 RGS 13 107.06 TGS 13 107.06 RGS 17 107.06 TGS 17 107.06 RGS 21 107.06 TGS 21	22	22	
		1/4" NPT				
		3/8" BSPT				
		3/8" NPT				
		1/2" BSPT				
		1/2" NPT				
 Couplings with Rubber Hoses Coupleur cannelé	06	Ø 6mm	107.06 HGS 06 107.06 HGS 08 107.06 HGS 10 107.06 HGS 13	22	22	
		Ø 8mm				
		Ø 10mm				
		Ø 13mm				
 Couplings with Push-Lock Hoses Coupleur cannelé pour tube auto serrant	06	Ø 10mm	107.06 FGS 10 107.06 FGS 13	22	22	
		Ø 13mm				
 Coupling for Plastic Tube Coupleur pour tube plastique	06	Ø 6.5x10mm	107.06 PGS 06 107.06 PGS 08 107.06 PGS 09	22	50.5	
		Ø 8x12mm				50.5
		Ø 9x13mm				50.5



SERIE 107S ISO 6150 - C

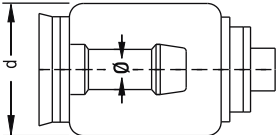
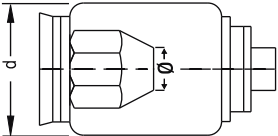
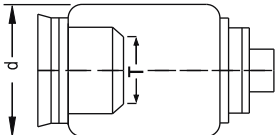
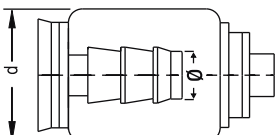
Couplings / Coupleurs	Ø Nominal Dia NW	Connection Raccord (T / Ø)	Single Shut-off / Passage Libre		d (mm)	d1 (mm)	L (mm)	L1 (mm)
			→ ←	Order No/Référence				
 Coupling for Plastic Tube With Guard Coupleur pour tube plastique avec spire de protection polyamide	06	Ø 6.5x10mm	→ ←	107.06 YGS 06	22		50.5	
		Ø 8x12mm	→ ←	107.06 YGS 08	22		50.5	
		Ø 9x13mm	→ ←	107.06 YGS 09	22		50.5	
 Built - in couplings Couplings Female Thread Coupleur taraudé Traversée de cloison	06	1/8" BSP	→ ←	1071.06 DGS 10	22	27	22.5	4
		1/8" NPT	→ ←	1071.06 NGS 10	22	27	22.5	4
		1/4" BSP	→ ←	1071.06 DGS 13	22	27	22.5	4
		1/4" NPT	→ ←	1071.06 NGS 13	22	27	22.5	4
		3/8" BSP	→ ←	1071.06 DGS 17	22	27	22.5	4
		3/8" NPT	→ ←	1071.06 NGS 17	22	27	22.5	4
 Fixed Y Couplings Coupleur en Y fixe	06	1/4" BSP	→ ←	107.06 2GSS 13				
		3/8" BSP	→ ←	107.06 2GSS 17				
		1/2" BSP	→ ←	107.06 2GSS 21				
 Mobile Y Couplings Coupleur en Y mobile	06		→ ←	107.06 2GUS 00				

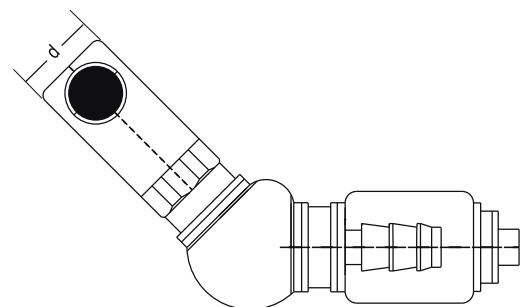
SELF VENTING TYPE
SÉCURITÉ ANTI COUP DE FOUET

One Handed connection and disconnection
Connexion & déconnexion à une main



SERIE 107S ISO 6150 - C Couplings with 360° Swivel Connection for compressed air
Raccord Rotulé à 360° pour air comprimé

Couplings / Coupleurs	Ø Nominal Dia NW	Connection Raccord (T / Ø)	Single Shut-off / Passage Libre	
			Order No/Référence	d (mm)
 Standard Hose Tail connection Rotule cannelée	06	Ø 6mm	107.06 HRS 06	22
		Ø 8mm	107.06 HRS 08	22
		Ø 10mm	107.06 HRS 10	22
		Ø 13mm	107.06 HRS 13	22
 Plastic Hose Connection Rotule pour tube plastique	06	Ø 8x12mm	107.06 PRS 08	22
		Ø 9x 13mm	107.06 PRS 09	22
 Female Threaded Connection Rotule taraudée	06	1/4" BSP	107.06 DRS 13	22
		3/8" BSP	107.06 DRS 17	22
		1/4" NPT	107.06 NRS 13	22
		3/8" NPT	107.06 NRS 17	22
 Push-Lock Hose Tail Connection Rotule pour tube auto serrant	06	Ø 3/8"	107.06 FRS 10	22
		Ø 1/2"	107.06 FRS 13	22



**SELF VENTING TYPE POLYAMIDE BODY
SÉCURITÉ ANTI COUP DE FOUET - CORPS EN POLYAMIDE**

One Handed connection and disconnection
Connexion & déconnexion à une main

■ SERIE 107SP ISO 6150 - C

SELF VENTING TYPE / SECURITÉ ANTI COUP DE FOUET

TST 107SP Quick release safety couplings for compressed air consisting of an 107SP socket and 107 plug...

Construction:

Single shut - off system. Plug with an open passage.
The functional parts have a great resistance to wear and tear, shocks and corrosion:

- plastic coupling bodies
- plug (13% chromium, content hardened and precision ground),
- large all - in - once steel push button (13% hardened chromium content),
- Nitrile seal (NBR)



TWO STAGE PUSH-BUTTON COUPLERS

- 1 st impulse on the push button: decompression
- 2 st impulse on the push button: releasing plug

The function of the safety prevents the possibility of dangerous hose-whip.

COUPLEUR 2 PRESSIONS

- 1- Première pression: Décompression du flexible
- 2- Deuxième pression: Désaccouplement de l'embout



● **tst 107S.06** ●

Body Size / Passage
ø5.5mm / 23,5mm²

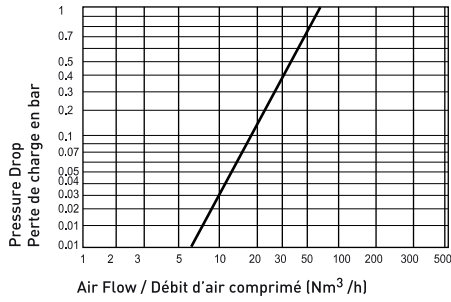
● **tst 107S.08** ●

Body Size / Passage
ø8mm / 50mm²

■ SERIE 107SP ISO 6150 - C

SERIE 107SP.06 ■

Pneumatic charts flow rate/Pressure drop from the single shut-off system
Courbe pneumatique débit/perte de charge
Coupleur simple obturation



Couplings & Plugs - Coupleurs & Embouts

Standard Serie

Nominal Ø (mm) - Nominal
Cross section (mm²) - Section de passage

5.5 mm
23.5 mm²

Max. Working Press. -
Pression maximale

Bar	12
PSI	174

O-Ring / Joint (100°C)

NBR




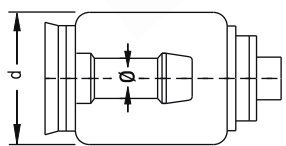
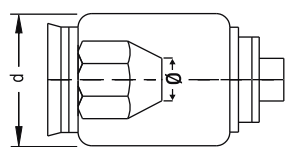
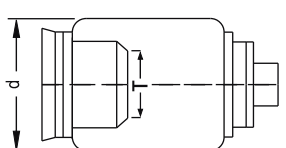
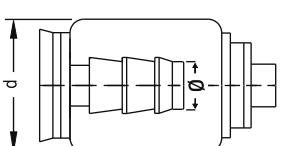


SERIE 107SP ISO 6150 - C

Couplings / Coupleurs	Ø Nominal Dia NW	Connection Raccord (T / Ø)	 Single Shut-off / Passage Libre		d (mm)	L (mm)
			Order No/Référence			
 Couplings Female Thread Coupleur taraudé	06	1/4" BSP	107P.06 DGS 13		28	54
		3/8" BSP	107P.06 DGS 17		28	62
		1/2" BSP	107P.06 DGS 21		28	65
 Couplings Male Thread Coupleur fileté cylindrique	06	1/8" BSP	107P.06 EGS 10		28	51
		1/4" BSP	107P.06 EGS 13		28	51
		3/8" BSP	107P.06 EGS 17		28	50
		1/2" BSP	107P.06 EGS 21		28	50
 Couplings for Rubber Hoses Coupleur cannelé	06	1/8" BSP	107P.06 EGS 10		28	51
		1/4" BSP	107P.06 EGS 13		28	51
		3/8" BSP	107P.06 EGS 17		28	50
		1/2" BSP	107P.06 EGS 21		28	50
 Coupling for Plastic Tube Coupleur pour tube plastique	06	Ø 6.5x10mm	107P.06 PGS 06		28	50.5
		Ø 8x12mm	107P.06 PGS 08		28	50.5
		Ø 9x13mm	107P.06 PGS 09		28	50.5
 Coupling for Plastic Tube With Guard Coupleur pour tube plastique avec spire de protection polyamide	06	Ø 6.5x10mm	107P.06 PGS 06		28	50.5
		Ø 8x12mm	107P.06 PGS 08		28	50.5
		Ø 9x13mm	107P.06 PGS 09		28	50.5



■ SERIE 107SP ISO 6150 - C

Couplings / Coupleurs	Ø Nominal Dia NW	Connection Raccord (T / Ø)	 Single Shut-off / Passage Libre Order No/Référence		d (mm)
 Standard Hose Tail connection Rotule cannelée	06	Ø 6mm	107P.06 HRS 06	28	
		Ø 8mm	107P.06 HRS 08	28	
		Ø 10mm	107P.06 HRS 10	28	
		Ø 13mm	107P.06 HRS 13	28	
 Plastic Hose Connection Rotule pour tube plastique	06	Ø 8x12 mm	107P.06 PRS 08	28	
		Ø 9x 13 mm	107P.06 PRS 09	28	
 Female Threaded Connection Rotule taraudee	06	1/4" BSP	107P.06 DRS 13	28	
		3/8" BSP	107P.06 DRS 17	28	
		1/4" NPT	107P.06 NRS 13	28	
		3/8" NPT	107P.06 NRS 17	28	
 Push-Lock Hose Tail Connection Rotule pour tube auto serrant	06	Ø 3/8"	107P.06 FRS 10	28	
		Ø 1/2"	107P.06 FRS 13	28	

DBI

GROUPE



QUICK COUPLINGS
COUPLEUR RAPIDE

107

ISO 6150 - C

