

DBI

GROUPE

QUICK COUPLINGS
COUPLEUR RAPIDE

107.03

ISO 6150 - C



JOINT ET MATERIAUX	01-02
CARACTERISTIQUE SERIE 107	03-04
OPTIONS	05-06
SERIE 107.03	07
COUPLEURS	08
COUPLEURS TRAVERSÉE DE CLOISON	09
COUPLEURS RÉPARTITEUR	10
EMBOUT SANS CLAPET	11
EMBOUT À CLAPET	12

**QUICK RELEASE COUPLINGS FOR ALL KINDS OF FLUIDS
COUPLEUR RAPIDE TOUS FLUIDES**

One Handed connection and disconnection
Ei Connexion & déconnexion à une main

SERIE 107 ISO 6150 - C

NBR (Nitrile)

Main properties: Resistant to oil and petrol good ageing characteristics, high abrasion resistance.

Applications standards
Bonne résistance mécanique
Bonne résistance aux hydrocarbures

FPM (Viton)

Main properties: Outstanding heat resistant performance, excellent resistance to oils, chemicals, solvent, active oxygen, and weather.

Bonne résistance chimique
Bonne résistance à la T°
Bonne résistance aux carburants
Bonne résistance aux solvants

EPDM (Ethylène - Propylène)

Main properties: Ethylene Propylene, High mechanical strength, excellent resistance to high and low temperatures and to active oxygen and weather. Good resistance to chemical media.

Bonne résistance à la T°
Bonne résistance à l' eau froide
Bonne résistance à l' eau chaude
Bonne résistance à la vapeur
Recommandé pour glycol

PTFE (Teflon)

For very aggressive media special constructions with PTFE seals (Teflon) are available.

Recommandé pour les applications chimiques très agressives
Très Résistant à basse température
Très résistant à haute température

	Matériau					Seal Joint		
	Steel zinc plated Acier zingué	Brass - Lation	AISI 316 Ti or similar Inox 316 Ti	Polyamide 11/12	Polyamid 11/12 Polyacetal - Polyacétal	NBR Nitrile	FPM Viton	EPDM
Acetate (Ethyl Acetate & Amyl Acetate)	✓	✓	✓	✓	✓			x
Acetic acid 10%	—	—	✓	—	✓			x
Acetone	✓	✓	✓	✓	✓			x
Acetylene	✓	✓	✓	✓	✓	x	x	x
Aero Engine Fuel BP, Esso Avgas100/130	✓	✓	✓	✓	■	x	x	
Aero Engine Oil BP : AIRO 1210, Esso:AVIATON-120 Shell:AIRO-120, DERD 2487 DERD 2497, DTD 585	✓	✓	✓	✓	■	x	x	
Skydrol	✓	—	—	—	—			x
Oronite	✓	—	—	—	—			x
Air, compressed	✓	✓	✓	✓	✓	x	x	
Air, hot up to 120°C	✓	✓	✓	■	—	x	x	
Air, hot up to 200°C	✓	✓	✓	—	—	x		
Alcohol	✓	✓	✓	✓	✓			x
Alum	—	—	✓	—	✓	x	x	x
Alkalies	—	■	✓	✓	■	x	x	
Ammonia, Liquid	■	—	✓	✓	—			x
Ammonium Sulphate Solution	—	—	✓	✓	■	x	x	x
Amyl Alcohol	✓	✓	✓	✓	✓			x
Aniline	✓	—	✓	■	—			x
Benzole	✓	✓	✓	✓	✓			x
Borax	✓	✓	✓	—	—	x	x	
Bultane	✓	✓	✓	✓	✓	x	x	
Bultane	✓	—	✓	—	—	x	x	
Butyl Alcohol	—	✓	✓	✓	✓			x
Carbon Dixide	—	✓	✓	✓	✓	x	x	x
Carbon Dioxide, dry	—	✓	✓	✓	—	x	x	x
Carbon Dioxide liquid	—	✓	✓	✓	■	x	x	x
Carbon Bisulphide	✓	—	✓	—	—			x
Chloride of Barium	—	✓	■	✓	✓	x	x	x
Chromic Acid	—	—	■	■	—			x
Citric Acid	—	■	✓	—	■	x	x	
Creosote	✓	—	✓	—	—	x		
Cresol	■	✓	✓	—	—	x		
Cresol, Cresylic Acid	✓	—	✓	—	—	x		
Cupric Chloride	✓	—	■	—	—	x	x	x
Cyclohexane	✓	—	✓	■	✓			x
Dimethylamine	✓	—	✓	—	—	x		
Emulsion. (Water/Oil)	■	✓	✓	✓	✓	x	x	
Ether	✓	✓	✓	✓	✓			x

Symbols - Symboles

- ✓ Fully resistant / Très résistant
- Partly / Résistance moyenne
- Non-resistant / Non résistant

	Matériau					Seal Joint		
	Steel zinc plated Acier zingué	Brass - Lation	Inox 316 Ti ou Similaire	Polyamide 11/12 PA 11/12	Polyacétal	NBR Nitrile	FPM Viton	EPDM
Ethyl Alcohol	✓	—	✓	✓	✓	x		x
Ethylene	✓	✓	✓	✓	✓			x
Formalin	✓	✓	✓	—	■	x	x	x
Formic Acid	—	■	✓	—	—			x
Frigen	✓	✓	✓	✓	✓	x	x	
Gasoline, Refined	✓	—	✓	—	—	x	x	
Gas, Blast Furnace	■	✓	✓	—	■			x
Gas, Coal	■	✓	✓	✓	✓			x
Gas, Coke Oven	■	✓	✓	■	■	x		
Gas, Lighting	✓	✓	✓	✓	✓	x	x	
Gas, Naphtalene content	✓	✓	✓	✓	■	x	x	
Gas, Natural	✓	✓	✓	✓	✓	x	x	
Gas, Town	✓	✓	✓	✓	✓	x		
Gear Oil	✓	—	✓	—	✓	x	x	
Glucose	—	✓	✓	✓	✓	x	x	x
Glycerine	✓	✓	✓	✓	✓	x	x	x
Glycol	✓	✓	✓	✓	✓	x		x
Helium	✓	✓	✓	✓	✓	x	x	x
Hexane	✓	—	✓	✓	■	x	x	
Hydrocarbons	✓	✓	✓	✓	✓	x	x	
Hydrogen	✓	✓	✓	✓	■	x	x	
Hydrogen Gas	✓	—	✓	—	—	x	x	
Hydrogen Sulphide, Humid	—	■	✓	✓	—			x
Hydrogen Sulphide, dry	—	✓	✓	✓	✓			x
Hyrogen Peroxide 30%	—	—	✓	✓	—			x
Isoproyl Alcohol	✓	—	✓	■	✓	x	x	x
Kerosene, JP 1	✓	✓	✓	✓	✓	x	x	
Keton, Methlyl Ethyl	✓	✓	✓	✓	✓			x
Latex, liquid up to 130°C	✓	✓	✓	■	■			x
Lubricating Oil	✓	✓	✓	✓	✓	x	x	
Lye, Caustic	—	✓	✓	✓	■			x
Lye, Hyochorous Acid	—	—	✓	—	■			
Lye, Pickling	—	MS60	✓	■	■			x
Magnesium Carbonate	✓	—	✓	✓	✓	x	x	x
Magnesium Hydroxide	✓	✓	✓	✓	✓	x	x	x
Magnesium Sulphate. M.Sulfat	—	—	✓	✓	✓	x	x	x
Mercury	✓	—	✓	✓	✓	x	x	x
Methane	✓	✓	✓	✓	✓	x	x	
Methanol	✓	✓	✓	✓	✓	x	x	
Methyl Alcohol	✓	✓	✓	■	✓	x	x	
Methyl Ethyl Ketone	✓	—	✓	✓	✓			x

Symbols - Symboles

- ✓ Fully resistant / Très résistant
- Partly / Résistance moyenne
- Non-resistant / Non résistant

**QUICK RELEASE COUPLINGS FOR ALL KINDS OF FLUIDS
COUPLEUR RAPIDE TOUS FLUIDES**

One Handed connection and disconnection
Ei Connexion & déconnexion à une main

SERIE 107 ISO 6150 - C

NBR (Nitrile)

Main properties: Resistant to oil and petrol good ageing characteristics, high abrasion resistance.

Applications standards
Bonne résistance mécanique
Bonne résistance aux hydrocarbures

FPM (Viton)

Main properties: Outstanding heat resistant performance, excellent resistance to oils, chemicals, solvent, active oxygen, and weather.

Bonne résistance chimique
Bonne résistance à la T°
Bonne résistance aux carburants
Bonne résistance aux solvants

EPDM (Ethylène - Propylène)

Main properties: Ethylen Propylene, High mechanical strength, excellent resistance to high and low temperatures and to active oxygen and weather. Good resistance to chemical media.

Bonne résistance à la T°
Bonne résistance à l' eau froide
Bonne résistance à l' eau chaude
Bonne résistance à la vapeur
Recommandé pour glycol

PTFE (Teflon)

For very aggressive media special constructions with PTFE seals (Teflon) are available.

Recommandé pour les applications chimiques très agressives
Très Résistant à basse température
Très résistant à haute température

	Matériau						Seal Joint		
	Steel zinc plated Acier zingué	Brass - Lation	AISI 316 Ti or similar Inox 316 Ti	Polyamide 11/12	Polyamid 11/12	Polyacétal - Polyacétal	NBR Nitrile	FPM Viton	EPDM
Methyl Benzene	✓	—	✓	✓	✓	✓		x	
Milk	✓	—	✓	✓	✓	✓	x	x	
Napta	✓	—	✓	✓	✓	✓	x	x	
Naptalene	✓	✓	✓	✓	✓	✓		x	
Naptenic. Acid	✓	—	✓	✓	✓	✓	x	x	
Nitrate of Ammonium	✓	—	✓	✓	✓	✓	x	x	x
Nitric Acid, up to 35°C	—	✓	✓	—	—	—		x	
Nitrogen	✓	✓	✓	✓	✓	✓	x	x	x
Nitro-Solution (no synthetic resin thinners)	✓	✓	✓	—	✓	✓			x
Oil, Coal Tr	✓	—	✓	✓	✓	✓		x	
Oil, Crude	✓	✓	✓	✓	✓	✓	x	x	
Oil, Diesel	✓	✓	✓	✓	✓	✓	x		
Oil, Diesel up to 120°C	—	✓	✓	✓	—	—		x	
Oil, Fuel up to 100°C	✓	✓	✓	✓	—	—	x	x	
Oil, up to 200°C/ 300°Cup to (special type)	✓	—	✓	—	—	—			FFKM
Oil, Fuel 5x5	✓	✓	✓	✓	✓	✓		x	
Oil, Hydraulic Chlorinated	—	—	✓	—	—	—		x	
Oil, Hydraulic up to 120°C	✓	✓	✓	✓	✓	✓	x	x	
Oil, Linseed	✓	✓	✓	✓	✓	✓	x	x	
Oil, Mineral	—	✓	✓	✓	✓	✓	x	x	
Oil, Transformer	—	—	✓	✓	✓	✓	x		
Oleic Acid	✓	—	✓	✓	✓	✓	x	x	
Oxalic Acid	—	—	✓	✓	✓	✓		x	x
Oxygen, fat free	—	✓	✓	✓	✓	✓			x
Paraffin	✓	✓	✓	✓	✓	✓	x		
Paraffin, (Wax)	✓	✓	✓	✓	✓	✓	x		
Pentachlorophenole	✓	—	—	—	—	—		x	
Petrol Ether	—	✓	✓	✓	✓	✓	x		
Petrol	✓	✓	✓	✓	✓	✓	x		
Phenol Solution	—	✓	✓	—	—	—			
Phosphoric Acid 10%	—	—	✓	—	—	—		x	x
Potassium Cyanide	✓	—	✓	✓	✓	✓		x	x
Potassium Dichromate	✓	—	✓	—	—	—		x	x
Potassium Sulphate	✓	—	✓	—	—	—	x	x	x
Potassium Hydroxide	✓	—	✓	✓	✓	✓			x
Propane	✓	✓	✓	✓	✓	✓	x	x	
Prussic Acid	✓	—	✓	—	—	—			x
Salt Solution	—	—	✓	✓	✓	✓			x
Sea Water	—	—	✓	✓	✓	✓	x	x	x

	Matériau						Seal Joint		
	Steel zinc plated Acier zingué	Brass - Lation	Inox 316 Ti ou Similaire	Polyamide 11/12 PA 11/12	Polyacétal		NBR Nitrile	FPM Viton	EPDM
Soap Solution	—	✓	✓	✓	✓	✓	x	x	x
Soda Solution	—	—	✓	✓	✓	✓	x	x	x
Sodium Acetate	—	—	✓	✓	✓	✓	x		x
Sodium Bicarbonate	—	—	—	✓	✓	✓		x	x
Sodium Carbonate	✓	—	✓	✓	✓	✓	x	x	x
Sodium Chloride	✓	—	✓	✓	✓	✓	x	x	x
Sodium Cyanide	✓	—	✓	—	—	—			x
Sodium Sulphide	✓	—	✓	—	—	—		x	x
Steam, up to 150°C	—	—	✓	—	—	—			x
Steam, up to 250°C	—	—	✓	—	—	—			PTFE
Sulphide of barium	✓	—	✓	✓	✓	✓	x	x	x
Sulphur Dioxide, Gas	—	—	✓	—	—	—			x
Sulphuret of Carbon	—	—	✓	—	—	—			x
Syntetic Resin Thinners (no nitrosolution)	✓	✓	✓	—	—	—			x
Tar	✓	✓	✓	✓	✓	✓	x	x	
Tetrachloride of Titanium	✓	—	✓	—	—	—			x
Toluol, dry	—	—	✓	✓	✓	✓			x
Trichlorethylene	✓	—	✓	✓	—	—			x
Turbine Fuel, BP: ATK 2494, ESSO:MIL-F56/16, SHELL:ATF 650	✓	✓	✓	✓	✓	✓	x	x	
Turbine Oil, Esso:35	✓	✓	✓	✓	✓	✓	x	x	
Turb-oil 1 S (MILL 7808)	—	—	✓	✓	✓	✓	x	x	
Vacuum (Strengthened Valve Springs)	✓	✓	✓	✓	✓	✓			
Vegetable Oil	✓	—	✓	✓	✓	✓	x	x	x
Water, Distilled	—	—	✓	✓	✓	✓			x
Water, Deionized	—	—	✓	—	—	—	x	x	
Water, Demineralised	—	—	✓	—	—	—			x
Water, up to 80°C	—	—	✓	✓	✓	✓	x	x	x
Water, over 80°C	—	—	✓	✓	—	—			x
Water, Cooling	—	—	✓	✓	✓	✓	x	x	
Xylene	✓	✓	✓	✓	✓	✓			x

**QUICK RELEASE COUPLINGS FOR ALL KINDS OF FLUIDS
COUPLEUR RAPIDE TOUS FLUIDES**

One Handed connection and disconnection
Ei Connexion & déconnexion à une main

SERIE 107 ISO 6150 - C

There are different types according to flow type. Différentes configurations d'obturation selon les débits voulus

<p>Standard Serie / Série Standard</p> <p>Single Shut - off / Simple obturation</p> <p>(Coupler with valve, plug without valve) (Coupleur à clapet - embout sans clapet)</p>	<p>B Serie / Série B</p> <p>Double Shut - off / Double obturation</p> <p>(Coupler and plug with valve) (Coupleur et embout avec clapet)</p>	<p>F Serie / Série F</p> <p>Full Flow / Passage Libre</p> <p>(Coupler and plug without valve) (Coupleur et embout sans clapet)</p>	<p>S Serie / Série S</p> <p>Single Shut-off and Self venting Simple obturation sécurité</p> <p>(Coupler with valve, plug without valve) (Coupleur à clapet - embout sans clapet)</p>
--	---	--	--

B Type / Série B

B - Type (Double Shut off Couplers)
While letting in the coupler - valf a pin open the stop valve in fastener fitting and releases the flow. Please, order for mutual blocking of coupler - systems always the B execution, because a pin valve - fastener fitting can not be combined with an single shut off couplers (no flow)

Série B (Double obturation)
Quand connecte l'embout, son clapet s'ouvre grâce au pointeau du coupleur Dans tous les cas de la fonction double obturation, il faut impérativement utiliser un embout double obturation (Version B)

F Type / Série F

F - Type (Full Flow Quick Release Couplers)
Plug and socket without valve. Please, order for mutual blocking of coupler - systems always the F execution.
Série F (Coupleur et embout sans clapet)
Toujours utiliser un coupleur passage libre et un embout passage libre

S Type / Série S

S - Type (Self Venting)
TST couplers of the Serie are equipped normally with an additional safety - lock system and self venting.

1st push on button : venting 1st push on button causes venting of the plug and hose and the valve closes whilst the plug remains connected.
2nd push on button : disconnection Because the hose has already vented, this 2nd push on the button allows disconnection of the plug from the socket without violent ejection and therefore without hose whip.

Les coupleurs série S sont équipés du système Safety Lock

Première pression sur le bouton :
Décompression automatique du flexible
Deuxième pression sur le bouton :
Dégagement du flexible sans risque

A	Aluminium	Aluminium
B	Brass	Laiton
C	Steel	Acier
E	EPDM seal	Joint EPDM
G	Parallel gas thread (BSP)	Filetage cylindrique (BSP)
H	Case hardening	Durci
J	Silicone seal	Joint Silicone
K	Chrome plated	Finition chromée
L	CR seal (neoprene)	Joint Neoprène
Ni	NBR seal (nitrile)	Joint Nitrile
N	Nickel plated	Finition nickelée
P	Teflone seal (PTFE)	Joint PTFE
R	Red Colour	Filetage conique
S	Stainless steel AISI(303=S3,420=S4,.316L=S6)	Acier inoxydable AISI (303=S3,420=S4,.316L=S6)
T	Sealing coat on the thread	Filetage téfloné
V	Fluorocarbon (FFP)	Joint Viton (FPM)
Y	Yellow Colour	Taune
Z	Zinc Plated	Finition zinguée
W	Perfluoroelastomer (FFPM)	Joint perfluoré (FFPM)
X	Without plating	Sans traitement de surface
PS	Plastic	Plastique
VA	Vacuum	Vide

Attention:
For optimal functioning, it is essential to use sockets and plugs of the same materials.

Pour un fonctionnement optimal, il est essentiel d'utiliser coupleur & embout de même construction

For optional orders please add the symbol of your option end of the order no.
Pour commander des options, ajouter le symbole en fin de référence

Seals - Joints:
E - Ethylene - propylene
J - Fluorosilicone (FMQ)
P - Téflon (PTFE)
W - Perfluoré (FFKM)
L - Chloroprene (CR)
M - Nitrile (NBR)
V - Viton (FPM)



● **tst 107.03** ●

Body Size / Passage
ø3mm / 7mm²

● **tst 107.06** ●

Body Size / Passage
ø5.5mm / 23,5mm²

QUICK RELEASE COUPLINGS FOR ALL KINDS OF FLUIDS
COUPLEUR RAPIDE TOUS FLUIDES

One Handed connection and disconnection
Ei Connexion & déconnexion à une main

SERIE 107 ISO 6150 - C

Standard Serie / Série Standard:

Largely stainless steel with 17 % chrome content.
Coupling back adaptor: anti-corrosion threaded steel Various gases, oils, hydrocarbons...

Inox à 17% de chrome Pression maxi: 50 bars
Pour utilisation air, gaz, hydrocarbures

S4 Serie / Série S4:

Inox à 17% de chrome Pression maxi: 50 bars
Pour utilisation air, eau, gaz, huiles...

S6 Serie / Série S6:

AISI 316L stainless steel with various corrosive gases, sea water, large number of chemical products in a corrosive environment.

Inox AISI 316L Pression maxi: 15 bars
Pour utilisation produits chimiques, Environnement corrosif

H4 Serie / Série H4:

Inox à 17% de chrome et
Inox AISI 316L
Pression maxi: 300, 350 & 450 bars
Pour utilisation haute pression
Eau et gaz

H6 Serie / Série H6:

AISI 316L stainless steel Plug body and push button high resistance stainless steel. High pressure liquids and gases, compressed air with demanding resistance to corrosion requirements or decontamination.

Inox AISI 316L
Pression maxi: 300, 350 & 450 bars
Pour utilisation haute pression
Eau et gaz
Environnement corrosif

VA Serie / Série VA:

Internal components are AISI 316L stainless steel. Proposed for primary vacuum to 1.10-3 torr and for all applications demanding high integrity leak tightness. (Standard product is for Normal vacuum purposes)

Préconiser pour le vide primaire 1.10-3
Et pour toute utilisation en milieu étanche
Le standard est utilisé pour un vide "normal"

Socket Coupleur	Unvalved plug Embout sans clapet	Valved plug Embout avec clapet
standard	standard	standard / S4
S4	standard	S4
S6	S6	S6
S4 / H4	standard	S4 / H4
S6 / H6	S6 / H6	S6 / H6
S4 / VA	standard	S4 / VA



● **tst 107.08** ●
Body Size / Passage
ø8mm / 50mm²

● **tst 107.11** ●
Body Size / Passage
ø11mm / 95mm²

● **tst 107.19** ●
Body Size / Passage
ø19mm / 283.5mm²

SERIE 107 ISO 6150 - C ■

Safety keys Couplers / Clés de sécurité

10 safety keys

- to prevent all errors of connection between:
- different gases (risk of explosion)
- different fluids
- to provide as systematic reference mark on the circuits.

10 clés de sécurité

- Pour prévenir toute erreur de connexion
- Entre gaz (risque d'explosion)
- Entre fluides
- Repérage organisé des circuits

References for Safety keys Couplers

Please add KEY Code (K..) end of the order no of the products.
(Ex: 107.03 EG 10 K00)

Referencement des clés de sécurité

Ajouter le code couleur à la fin de la référence des produits
Ex: 107.03EG10K00

YELLOW/ JAUNE - 180°

CODE : K00



VIOLET / VIOLET - 165°

CODE : K15



RED/ROUGE - 150°

CODE : K30



GREEN/VERT - 135°

CODE : K45



BLUE/BLEU - 120°

CODE : K60



BROWN/MARRON - 105°

CODE : K75



BLACK/NOIR - 90°

CODE : K90



RED-BLACK/ROUGE-NOIR - 80°

CODE : K100



RED-GREEN/ROUGE-VERT - 70°

CODE : K110



RED-YELLOW/ROUGENOIR - 60°

CODE : K120



SAFETY KEYS COUPLERS ARE NOT FOR SALE IN GERMANY

Colour disc for built - in sockets Disque de couleur sur coupleur traversée de clesion

Colour disc for built - in sockets
for immediate visual identification of circuits

Disque de couleur sur coupleur traversée de clesion
Pour identification visuelle immédiate des circuits



H00 | H15 | H30 | H45 | H60 | H75 | H90

107.03 + + + + + + +



-  Yellow / Jaune H00
-  Violet / Violet H15
-  Red / Rouge H30
-  Green / Vert H45
-  Blue / Bleu H60
-  Brown / Marron H75
-  Black / Noir H90

Safety keys Couplers / Options



Protection against dirt ingress code PK

In connected position the Chloroprene (CR) protector protects the functional components of the sockets against dirty and other external pollutants.

It must be combined with a YD push button.

Operating temperatures:
-20° C to + 90° C
(Not available for 107.03)

Protection anti-poussiera Code PK

Montée sur le coupleur, cette option en CR protège les pièces fonctionnelles contre les poussières ou autres agents extérieurs.

Doit être montée sur l'option YD
T°: -20° C to + 90° C

(Non disponible pour 107.03)



Raised push button code YD

Recommended for frequent connection / disconnection or use when wearing safety gloves.

Bouton dépassant code YD

Recommandé pour de fréquentes Connexion - déconnexion ou utilisation avec des gants.



Fixing device for socket dust cap code ZK

Fixation du bouchon de protection
Sur le coupleur
Code ZK



Safety Button Code ED

1. Pull back safety slider.
2. Push button.

Bouton de sécurité Code ED




1. Tirer le bouton
2. Appuyer sur le bouton

**QUICK RELEASE COUPLINGS FOR ALL KINDS OF FLUIDS
COUPLEUR RAPIDE TOUS FLUIDES**

One Handed connection and disconnection
Connexion & déconnexion à une main

SERIE 107 ISO 6150 - C

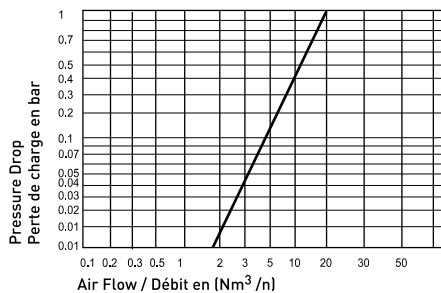
Dust Caps - Bouchon de protection

	Dust caps for couplings Bouchon pour coupleur	107.03 KG 00
	Dust caps for plugs Bouchon pour embout	107.03 KU 00
	Dust caps for plugs (PP) Bouchon pour embout en Polypropylène	107.03 UTK 00

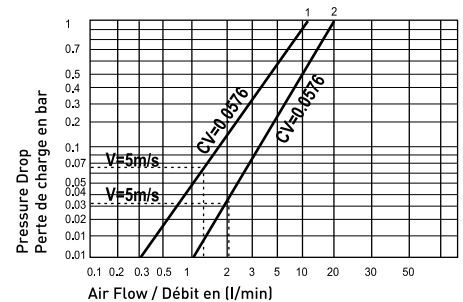
SERIE 107.03

Couplings & Plugs - Coupleurs & Embouts		Standard Serie	S4 Serie	S6 Serie	H4 Serie	H6 Serie	W Serie
Nominal Ø (mm) - Diamètre nominal		3	3	3	3	3	3
Cross section (mm ²) - Section de passage		7	7	7	7	7	7
Max. Working Press. - Pression maximale	Bar	50	50	15	400	400	10-3 torr
	PSI	725	725	217	5800	5800	
O-Ring / Joint (100°C)		NBR	Option - Option				

Pneumatic charts flow rate/Pressure drop from the single shut-off system
Courbe pneumatique débit/perte de charge
Coupleur simple obturation




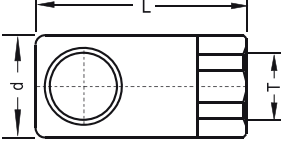
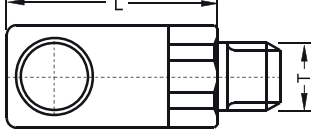
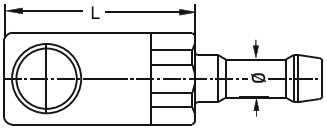
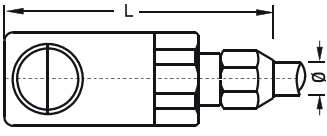
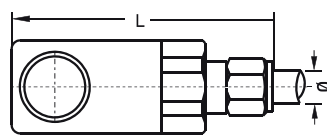
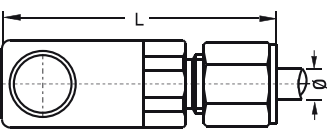


Hydraulic charts flow rate/Pressure drop
Courbe hydraulique débit/perte de charge





SERIE 107 ISO 6150 - C ■

Couplings / Coupleurs	Ø Nominal Dia NW	Connection Raccord (T)	 Single Shut-off Simple obturation	 Double Shut-off Double obturation	 Full Flow Passage libre	d (mm)	L (mm)
			Order No/Référence	Order No/Référence	Order No/Référence		
 Couplings Female Thread Coupleur taraudé	03	1/8" BSP	107.03 DG 10	107.03 DGB 10	107.03 DGF 10	16	43.5
		1/8 BSPT*	107.03 QG 10	107.03 QGB 10	107.03 QGF 10	16	43
		1/8" NPT	107.03 NG 10	107.03 NGB 10	107.03 NGF 10	16	43
		7/16"-20UN	107.03 UG 11	107.03 UGB 11	107.03 UGF 11	16	43
* Conical / Conique							
 Couplings Male Thread Coupleur fileté cylindrique	03	1/8" BSP	107.03 EG 10	107.03 EGB 10	107.03 EGF 10		34
		1/8" NPT	107.03 TG 10	107.03 TGB 10	107.03 TGF 10		34
		1/4" BSP	107.03 EG 13	107.03 EGB 13	107.03 EGF 13		34
		1/4" NPT	107.03 TG 13	107.03 TGB 13	107.03 TGF 13		34
 Couplings for Rubber Hose Coupleur cannelé	03	Ø 4mm	107.03 HG 04	107.03 HGB 04	107.03 HGF 04		34
		Ø 6mm	107.03 HG 06	107.03 HGB 06	107.03 HGF 06		34
 Couplings for Plastic Tube Coupleur pour tube plastique	03	Ø 4x6mm	107.03 PG 04	107.03 PGB 04	107.03 PGF 04		48.5
		Ø 6x8mm	107.03 PG 06	107.03 PGB 06	107.03 PGF 06		48.5
 Couplings for Copper Tube Coupleur pour tube cuivre	03	Ø 4x6mm	107.03 CG 04	107.03 CGB 04	107.03 CGF 04		51.5
		Ø 6x8mm	107.03 CG 06	107.03 CGB 06	107.03 CGF 06		51.5
 Couplings for Stainless Steel Tube Coupleur pour tube inoxydable	03	Ø 6mm	107.03 IG 06	107.03 IGB 06	107.03 IGF 06		44
		Ø 8mm	107.03 IG 08	107.03 IGB 08	107.03 IGF 08		44
		Ø 1/4"	107.03 IG 6.3	107.03 IGB 6.3	107.03 IGF 6.3		44

QUICK RELEASE COUPLINGS FOR ALL KINDS OF FLUIDS
COUPLEUR RAPIDE TOUS FLUIDES

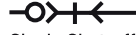
One Handed connection and disconnection
Connexion & déconnexion à une main



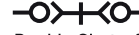
SERIE 107 ISO 6150 - C

(B - SERIE)

(F - SERIE)



Single Shut-off
Simple obturation



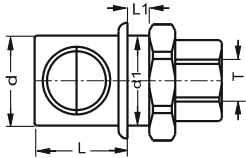
Double Shut-off
Double obturation



Full Flow
Passage libre

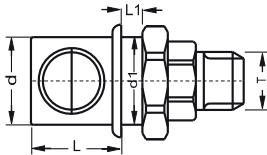
Built - in Couplings
Coupleurs traversée de cloison

Nominal Dia NW	Connection Raccord (T)	Order No/Référence			d (mm)	d1 (mm)	L (mm)	L1 (mm)
		Single Shut-off Simple obturation	Double Shut-off Double obturation	Full Flow Passage libre				



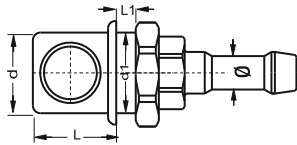
Couplings Female Thread
Coupleur taraudé
traversée de cloison

03	1/8" BSP	1071.03 DG 10	1071.03 DGB 10	1071.03 DGF 10	16	16	18	4
	1/8" NPT	1071.03 NG 10	1071.03 NGB 10	1071.03 NGF 10	16	16	18	4
	7/16"-20UN	1071.03 UG 10	1071.03 UGB 10	1071.03 UGF 10	16	16	18	4



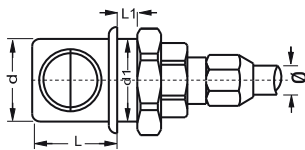
Couplings Male Thread
Coupleur fileté cylindrique
traversée de cloison

03	1/8" BSP	1071.03 EG 10	1071.03 EGB 10	1071.03 EGF 10	16	16	18	4
	1/8" NPT	1071.03 TG 10	1071.03 TGB 10	1071.03 TGF 10	16	16	18	4
	1/4" BSP	1071.03 EG 13	1071.03 EGB 13	1071.03 EGF 13	16	16	18	4
	1/4" NPT	1071.03 TG 13	1071.03 TGB 13	1071.03 TGF 13	16	16	18	4



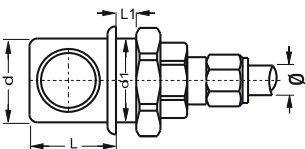
Couplings for Rubber Hose
Coupleur cannelé traversée de cloison

03	Ø 4mm	1071.03 HG 04	1071.03 HGB 04	1071.03 HGF 04	16	16	18	4
	Ø 6mm	1071.03 HG 06	1071.03 HGB 06	1071.03 HGF 06	16	16	18	4



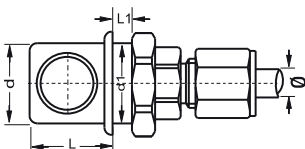
Couplings for Plastic Tube
Coupleur pour tube plastique
traversée de cloison

03	Ø 4x6mm	1071.03 PG 04	1071.03 PGB 04	1071.03 PGF 04	16	16	18	4
	Ø 6x8mm	1071.03 PG 06	1071.03 PGB 06	1071.03 PGF 06	16	16	18	4



Couplings for Copper Tube
Coupleur pour tube cuivre
traversée de cloison

03	Ø 4x6mm	1071.03 CG 04	1071.03 CGB 04	1071.03 CGF 04	16	16	18	4
	Ø 6x8mm	1071.03 CG 06	1071.03 CGB 06	1071.03 CGF 06	16	16	18	4



Couplings for Stainless Steel Tube
Coupleur pour tube inoxydable
traversée de cloison



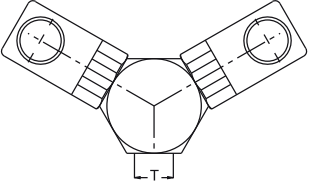
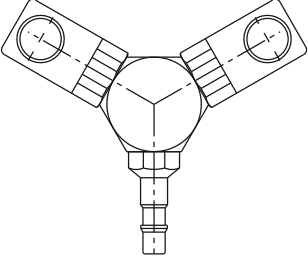
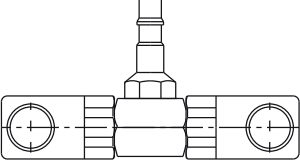
03	Ø 4mm	1071.03 IG 04	1071.03 IGB 06	1071.03 IGF 06	16	16	18	4
	Ø 6mm	1071.03 IG 06	1071.03 IGB 08	1071.03 IGF 08	16	16	18	4
	Ø 1/4"	1071.03 IG 6.3	1071.03 IGB 6.3	1071.03 IGF 6.3	16	16	18	4

QUICK RELEASE COUPLINGS FOR ALL KINDS OF FLUIDS
COUPLEUR RAPIDE TOUS FLUIDES

One Handed connection and disconnection
Connexion & déconnexion à une main



SERIE 107 ISO 6150 - C ■

Built - in Couplings Coupleurs répartiteur	Ø Nominal Dia NW	Connection / Raccord (T/Ø)		
			Single Shut-off / Simple obturation Order No/Référence	Full Flow / Passage libre Order No/Référence
 Fixed Y Couplings Coupleur en Y fixe	03	1/4" BSP	107.03 2GS 13	107.03 2GSF 13
 Mobile Y Couplings Coupleur en Y mobile	03		107.03 2GU 00	107.03 2GUF 00
 Mobile T Couplings Coupleur en Té mobile	03		107.03 2GU 01	107.03 2GUF 01

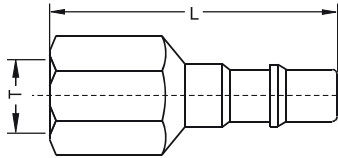


SERIE 107 ISO 6150 - C ■



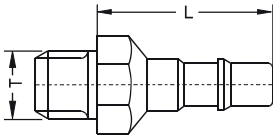
Single Shut-off / Passage Libre
Order No/Référence

Unvalved Plugs
Embout sans clapet



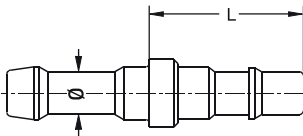
Plugs Female Thread
Embout taraudé

* Conical / Conique

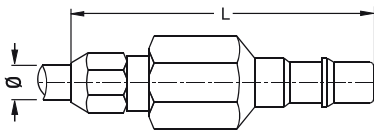


Plugs Male Thread
Embout fileté cylindrique

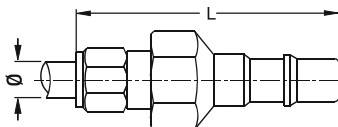
* Conical / Conique



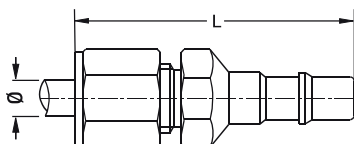
Plugs for Rubber Hoses
Embout cannelé



Plugs for Plastic Tube
Embout pour tube plastique



Plugs for Copper Tube
Embout pour tube cuivre



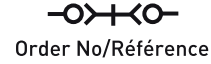
Plugs for Stainless Steel Tube
Embout pour tube inoxydable

Ø Nominal Dia NW	Connection Raccord (T / Ø)	Single Shut-off / Passage Libre Order No/Référence	L (mm)
03	1/8" BSP	107.03 DU 10	36
	1/8" BSPT*	107.03 QU 10	36
	1/8" NPT	107.03 NU 10	36
	1/4" BSP	107.03 DU 13	37
03	1/8" BSP	107.03 EU 10	28,5
	1/8" BSPT*	107.03 RU 10	28,5
	1/8" NPT	107.03 TU 10	28,5
	1/4" BSP	107.03 EU 13	28,5
	1/4" BSPT*	107.03 RU 13	28,5
	1/4" NPT	107.03 TU 13	28,5
03	Ø 4mm	107.03 HU 04	25
	Ø 6mm	107.03 HU 06	25
03	Ø 4/6 mm	107.03 PU 04	59
	Ø 6/8 mm	107.03 PU 06	59
03	Ø 4/6 mm	107.03 CU 04	42.5
	Ø 6/8 mm	107.03 CU 06	42.5
03	Ø 6 mm	107.03 IU 04	42.5
	Ø 8 mm	107.03 IU 06	42.5
	Ø 1/4"	107.03 IU 6.3	42.5



SERIE 107B ISO 6150 - C ■

(B-SERIE)



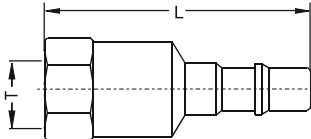
Order No/Référence

L
(mm)

Shut-off Plugs
Embout à clapet

∅
Nominal
Dia
NW

Connection
Raccord
(T / ∅)



Plugs With Female Thread
Embout taraudé à clapet

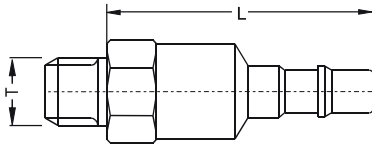
* Conical / Conique

03

1/8" BSP
1/8" BSPT*
1/8" NPT
7/16" UN-20

107.03 DUB 10
107.03 QUB 10
107.03 NUB 10
107.03 UUB 11

51
51
51
51



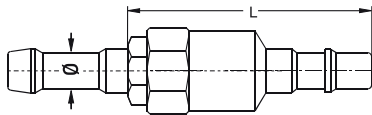
Plugs With Male Thread
Embout fileté cylindrique à clapet

03

1/8" BSP
1/8" NPT
1/4" BSP
1/4" NPT

107.03 EUB 10
107.03 TUB 10
107.03 EUB 13
107.03 TUB 13

41.5
41.5
41.5
41.5



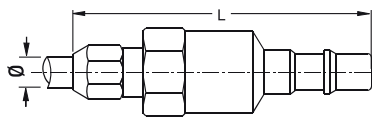
Plugs for Rubber Hoses
Embout cannelé à clapet

03

∅ 4mm
∅ 6mm

107.03 HUB 04
107.03 HUB 06

41.5
41.5



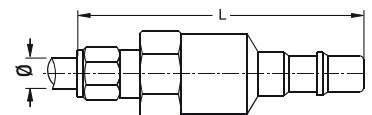
Plugs for Plastic Tube
Embout fileté plastique à clapet

03

∅ 4/6 mm
∅ 6/8 mm

107.03 PUB 04
107.03 PUB 06

56
56



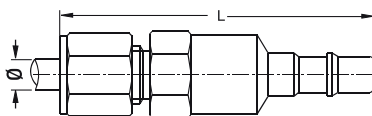
Plugs For copper Tube
Embout pour tube à clapet

03

∅ 4/6 mm
∅ 6/8 mm

107.03 CUB 04
107.03 CUB 06

59
59



Plugs For Stainless Steeltube
Embout pour tube acier inoxydable à clapet

03

∅ 6 mm
∅ 8 mm
∅ 1/4"

107.03 IUB 04
107.03 IUB 06
107.03 IUB 6.3

59
59
59

DBI

GROUPE



QUICK COUPLINGS
COUPLEUR RAPIDE

107

ISO 6150 - C

