

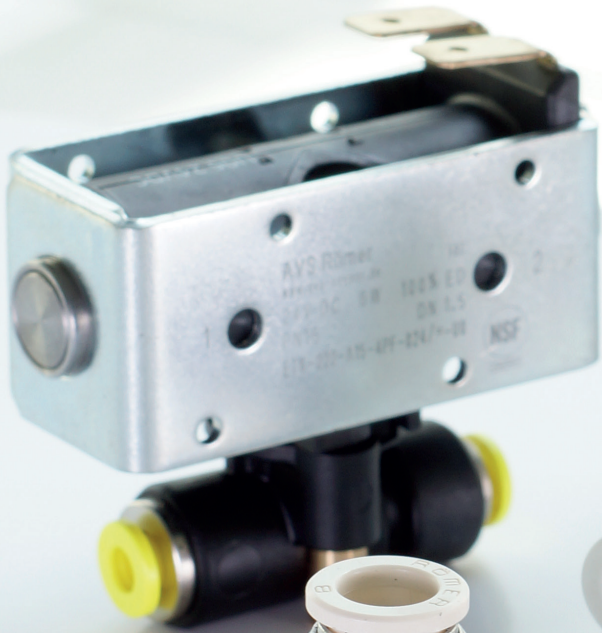


Product catalog

“

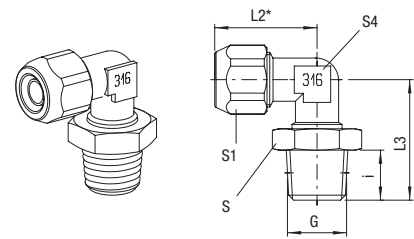
**AVS RÖMER, YOUR SPECIALIST
FOR CUSTOMIZED SOLUTIONS!**



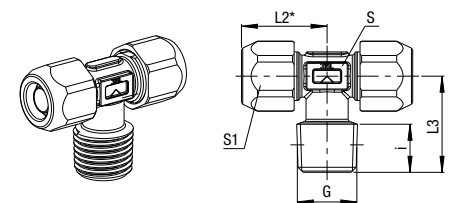


90° Elbow Adaptor - Male - Positionable

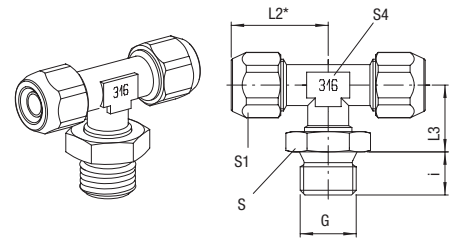
Price group	13	PN	16	T _{min}	0 °C	Thread	conical	Seal: FKM (FDA-compliant)	not suitable for rotating or oscill. movement		NSF	Stainless steel	AISI 316L
for tube D/d	G	i	L2*	L3	S1	S4	S	Weight in [g]	Type	Order number	Price		
6/4	R 1/8	7.5	22.5	21.5	12	10	13	26	130X4-6/4-1/8KFF	361214	o. r.		
6/4	R 1/4	11	22.5	25.5	12	10	17	29.4	130X4-6/4-1/4KFF	361215	o. r.		
8/6	R 1/8	7.5	22.5	21.5	14	10	13	25.2	130X4-8/6-1/8KFF	361220	o. r.		
8/6	R 1/4	11	22.5	25.5	14	10	17	30.4	130X4-8/6-1/4KFF	361221	o. r.		
10/8	R 1/4	11	24	25.5	17	10	17	36.7	130X4-10/8-1/4KFF	361230	o. r.		

Illustration

T-Adaptor - Male

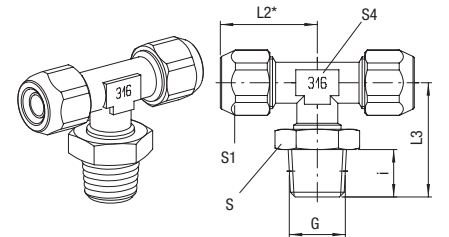
Price group	13	PN	25	T _{min}	-40 °C	Thread	conical				NSF	Stainless steel	AISI 316L
for tube D/d	G	i	L2*	L3	S1	S	Weight in [g]	Type	Order number	Price			
6/4	R 1/8	7.6	17.6	16.9	12	8	24.2	141X4M-6/4-1/8K	361801	o. r.			
6/4	R 1/4	10.5	17.6	19.9	12	9	29.1	141X4M-6/4-1/4K	361802	o. r.			
8/6	R 1/8	7.5	18.4	18	14	9	30.3	141X4M-8/6-1/8K	361803	o. r.			
8/6	R 1/4	10.5	18.7	21	14	10	35.7	141X4M-8/6-1/4K	361804	o. r.			
10/8	R 1/8	9	25	18.5	17	10	46.9	141X4-10/8-1/8K	361429	o. r.			
10/8	R 1/4	10.5	25	21	17	10	50.8	141X4-10/8-1/4K	361430	o. r.			
10/8	R 3/8	11.3	27	25	17	13	69.5	141X4-10/8-3/8K	361431	o. r.			
12/10	R 3/8	11.3	29	25	19	13	74.2	141X4-12/10-3/8K	361443	o. r.			
12/10	R 1/2	14.2	30.5	29	19	17	106	141X4-12/10-1/2K	361444	o. r.			

Illustration

T-Adaptor - Male - Positionable

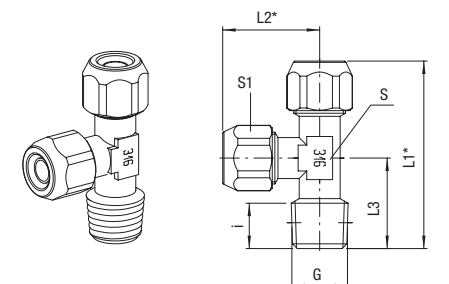
Price group	13	PN	16	T _{min}	0 °C	Thread	cylindrical	Seal: FKM (FDA-compliant)	not suitable for rotating or oscill. movement		NSF	Stainless steel	AISI 316L
for tube D/d	G	i	L2*	L3	S1	S4	S	Weight in [g]	Type	Order number	Price		
6/4	G 1/8	8	22.5	14	12	10	13	35.8	121X4-6/4-1/8FF	361514	o. r.		
6/4	G 1/4	10	22.5	14.5	12	10	17	38.3	121X4-6/4-1/4FF	361515	o. r.		
8/6	G 1/8	8	22.5	14	14	10	13	37.5	121X4-8/6-1/8FF	361520	o. r.		
8/6	G 1/4	10	22.5	14.5	14	10	17	41.4	121X4-8/6-1/4FF	361521	o. r.		
10/8	G 1/4	10	24	14.5	17	10	17	55.0	121X4-10/8-1/4FF	361530	o. r.		

Illustration

T-Adaptor - Male - Positionable

Price group	13	PN	16	T _{min}	0 °C	Thread	conical	Seal: FKM (FDA-compliant)	not suitable for rotating or oscill. movement		NSF	Stainless steel	AISI 316L
for tube D/d	G	i	L2*	L3	S1	S4	S	Weight in [g]	Type	Order number	Price		
6/4	R 1/8	7.5	22.5	21.5	12	10	13	35.8	121X4-6/4-1/8KFF	361614	o. r.		
6/4	R 1/4	11	22.5	25.5	12	10	17	39.6	121X4-6/4-1/4KFF	361615	o. r.		
8/6	R 1/8	7.5	22.5	21.5	14	10	13	37.5	121X4-8/6-1/8KFF	361620	o. r.		
8/6	R 1/4	11	22.5	25.5	14	10	17	42.1	121X4-8/6-1/4KFF	361621	o. r.		
10/8	R 1/4	11	24	25.5	17	10	17	55	121X4-10/8-1/4KFF	361630	o. r.		

Illustration

Side T-Adaptor - Male

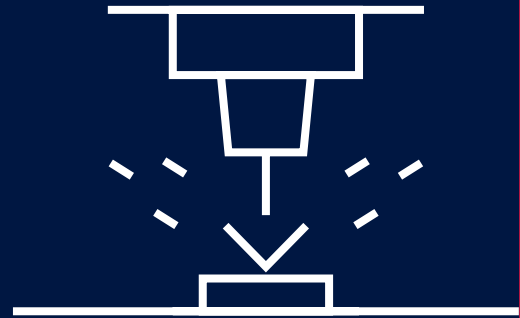
Price group	13	PN	25	T _{min}	-40 °C	Thread	conical				NSF	Stainless steel	AISI 316L
for tube D/d	G	i	L1*	L2*	L3	S1	S	Weight in [g]	Type	Order number	Price		
6/4	R 1/8	9	41	22.5	18.5	12	10	30	142X4-6/4-1/8K	361714	o. r.		
6/4	R 1/4	10.5	43.5	22.5	21	12	10	32.8	142X4-6/4-1/4K	361715	o. r.		
8/6	R 1/8	9	41	22.5	18.5	14	10	32.1	142X4-8/6-1/8K	361720	o. r.		
8/6	R 1/4	10.5	43.5	22.5	21	14	10	34.8	142X4-8/6-1/4K	361721	o. r.		
10/8	R 1/8	9	43.5	25	18.5	17	10	44.4	142X4-10/8-1/8K	361729	o. r.		
10/8	R 1/4	10.5	46	25	21	17	10	55.4	142X4-10/8-1/4K	361730	o. r.		
10/8	R 3/8	11.3	52	27	25	17	13	68	142X4-10/8-3/8K	361731	o. r.		

Illustration


* Approx. dimension with cap nut tightened

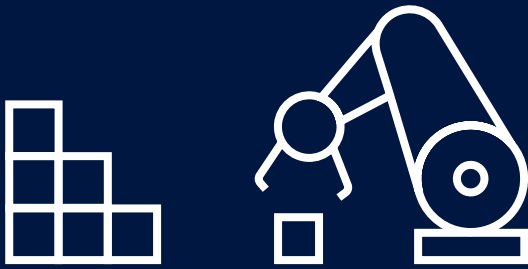
10,500

products and variants through **modular design**,
different configurations and **custom solutions**



○ Since 1970

Successful family business for over **50 years**

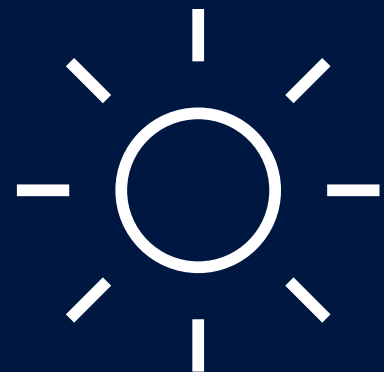


From 1 to 1,000,000

Flexibility in the number of pieces

○ 14 %

of the electricity demand is
generated with **our own PV system**





Worldwide

International customers from the market segments
Food & Beverage, Industrial, Life Science

J. C. Römer Foundation since **2012**
to promote young technical talent

3 core values

The Römer family

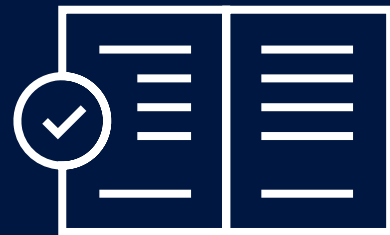
We live cohesion and trust

Customer orientation

We are committed to quality and service

Down-to-earth self-confidence

We stand by our word



3,500

Catalog products with variants

3 locations

Grafenau, Langenberg and Switzerland



Shipping to
different countries

48

Certifications and approvals

AVS Römer Quality and Environmental Management

Our ISO certifications confirm the sustainable environmental policy and the high quality at AVS Römer. The implemented management systems according to ISO 9001:2015 and ISO 14001:2015 ensure an improvement process, which continuously expands the high standard at our company.



Product approvals

For numerous applications, compliance with certain safety standards is necessary. Among other things, this requires a high degree of cleanliness as well as special design guidelines and materials. A large number of our products meet these stringent requirements.



Product and material conformity

AVS Römer products are particularly well-suited for use in various areas due to their compliance with certain guidelines and standards. Further conformities, approvals and certifications on request.



**MADE IN
GERMANY**

AVS Römer GmbH & Co. KG
Reismühle 3
94481 Grafenau
Germany

AVS G. Roemer Schweiz AG
Heidelbergstrasse 9
8355 Aadorf
Switzerland

DE GB US

Phone: +49 8552 4076 300
E-Mail: info@avs-roemer.de
www.avs-roemer.de

CH ES BE FR IT

Phone: +41 32 377 22 11
E-Mail: info@avs-roemer.ch
www.avs-roemer.ch


FSC
www.fsc.org
MIX
Paper from
responsible sources
FSC® C114687

